
Leveraging Tumor Heterogeneity: Heterogeneous Graph Representation Learning for Cancer Survival Prediction in Whole Slide Images

Junxian Wu^{1,2*} Xinyi Ke^{3*} Xiaoming Jiang^{4*} Huanwen Wu^{3†} Youyong Kong^{2,5†}
Lizhi Shao^{1†}

¹ School of Internet, Anhui University

² Jiangsu Provincial Joint International Research Laboratory of Medical Information Processing,
School of Computer Science and Engineering, Southeast University

³ Department of Pathology, State Key Laboratory of Complex Severe and Rare Disease,
Molecular Pathology Research Center, Peking Union Medical College Hospital,
Chinese Academy of Medical Sciences and Peking Union Medical College, Beijing, China

⁴ School of Bioinformatics, Chongqing University of Post and Telecommunications

⁵ Key Laboratory of New Generation Artificial Intelligence Technology and Its
Interdisciplinary Applications (Southeast University), Ministry of Education, China

{junxianwu, kongyouyong}@seu.edu.cn

xinyike0321@student.pumc.edu.cn

jiangxm@cqupt.edu.cn

wuhuanwen@xhyy.pumc.edu.cn

24115@ahu.edu.cn

Abstract

Survival prediction is a significant challenge in cancer management. Tumor micro-environment is a highly sophisticated ecosystem consisting of cancer cells, immune cells, endothelial cells, fibroblasts, nerves and extracellular matrix. The intratumor heterogeneity and the interaction across multiple tissue types profoundly impact the prognosis. However, current methods often neglect the fact that the contribution to prognosis differs with tissue types. In this paper, we propose ProtoSurv, a novel heterogeneous graph model for WSI survival prediction. The learning process of ProtoSurv is not only driven by data but also incorporates pathological domain knowledge, including the awareness of tissue heterogeneity, the emphasis on prior knowledge of prognostic-related tissues, and the depiction of spatial interaction across multiple tissues. We validate ProtoSurv across five different cancer types from TCGA (*i.e.*, BRCA, LGG, LUAD, COAD and PAAD), and demonstrate the superiority of our method over the state-of-the-art methods. Source code is available at <https://github.com/wjx-error/ProtoSurv>.

1 Introduction

Pathological images are considered the gold standard for cancer diagnosis and provide rich prognostic information, such as the tumor differentiation and lymphovascular infiltration. Traditional manual evaluation by pathologists is subject to inter-observer inconsistency and lacks accuracy in the risk stratification for patients. The advent of whole-slide imaging allows the entire slide to be digitalized at high resolution, enabling the standardized and automated analysis of Whole Slide Images (WSIs)

*Equal contribution.

†Corresponding author.

with deep learning methods. Deep learning has been applied to a series of medical tasks, including tumor segmentation, grading, subtyping and the prediction of molecular alterations and clinical outcomes.

The gigapixel WSIs encompass detailed cellular-level information, but this leads to extremely high memory usage. To make the memory usage acceptable for analyzing WSIs, most current works are based on the Multiple Instance Learning (MIL) framework [1, 2, 3, 4]. In MIL, WSIs are divided into multiple instances that are encoded separately, and then aggregated to obtain bag-level (slide-level) representations for downstream tasks. However, these methods based on MIL do not emphasize the contextual information among instances within the WSI, leading to a loss of structural information across tissues. Therefore, these methods struggle to achieve good performance on prognostic prediction tasks that require a comprehensive understanding of the local morphology and overall structure of the tumor microenvironment (TME) [5]. In recent years, graph neural network (GNN) has shown tremendous potential in prognostic prediction [5, 6, 7, 8], which can learn spatial interaction across tissues, enabling the deciphering of the tumor ecosystem based on the proximity of tumor cells to other TME components [5, 7, 8].

Apart from the spatial relationships, the high-resolution WSIs contain rich information about tissue heterogeneity within a tumor [9, 10], which also has significant prognostic value. The tissue categories in pathology slides include tumor, stroma, immune infiltration, nerves, necrosis, etc., which together form the tumor microenvironment, but each varies in importance to cancer prognosis [11, 12, 13]. Considering the presence of intratumoral tissue heterogeneity and understanding the specific characteristics of crucial tissue types can enhance the medical interpretability and optimize the graph model theoretically. (i) From the medical perspective: A large amount of histological studies have established the prognostic value of certain tissue types, such as the tumor, immune infiltration, stroma, and necrosis [9, 10, 11, 12, 13]. Leveraging prior knowledge about intratumoral tissue heterogeneity can guide the model to focus on tissues highly relevant to survival prediction, aligning more closely with medical consensus and enhancing the model's interpretability. (ii) From the model design perspective: Commonly used GCN-like models are based on the homogeneity assumption, and it has been demonstrated that they do not perform well on heterogeneous graphs [14, 15]. Thus, the objective presence of heterogeneity among patches within WSIs could be affecting the performance of homogeneous graph-based WSI analysis models.

Therefore, we propose ProtoSurv, a novel heterogeneous graph model for cancer prognosis prediction. The heterogeneous graph introduces a "tissue category" attribute to each node to differentiate prognosis-related tissues in the WSIs. The selection of tissue categories is according to tissues clinically proven to be highly related to prognosis, which introduces clinical prior knowledge into the model. We incorporate the concept of prototype learning from advanced heterogeneous graph solutions [16, 17], decoupling the model into the Structure View and the Histology View. The Structure View (SV) utilizes the neighbor message-passing mechanism of GNN to simulate the operation of pathologists observing at multiple magnifications. The Histology View (HV) extract prototypes from global features under the guidance of pathological priors related to prognosis. Subsequently, under the guidance of prototypes extracted by HV, the model aggregates regions of interest from the context-aware multi-hop neighborhood information from SV. We extensively evaluated our method on five TCGA public benchmark datasets and compared it to various state-of-the-art survival prediction methods. The survival prediction results of our approach significantly outperform the competitors.

We summarize our main contributions as follows:

1. **Domain knowledge awareness:** To holistically depict the morphological features and spatial interaction across multiple tissue types within tumors, we proposed ProtoSurv, which decipher intratumoral tissue heterogeneity using a heterogeneous graph and incorporates prior knowledge of prognostic tissue types into the prediction process.
2. **Validation on multi-cancer datasets:** We conducted comprehensive evaluations on five public benchmark datasets. ProtoSurv demonstrates robust survival prediction performance across multi-cancer datasets.

2 Related Work

2.1 Weakly Supervised Learning Survival Prediction in WSIs

Manual annotations of WSIs demand enormous effort and domain knowledge from highly skilled pathologists. Consequently, only slide-level labels are commonly available, while pixel- or region-level annotations are seldom present. Hence, WSI tasks are frequently regarded as weakly supervised learning problems. In recent years, Convolutional Neural Network (CNN)-based and MIL-based weakly supervised learning approaches have been proposed for survival analysis in WSIs [18, 19, 20, 5, 8]. Mobadersany et al. [18] proposed an end-to-end CNNs method for processing manually annotated ROIs. Zhu et al. [19] used K-means to cluster patches and employed the clustering results as inputs into the CNN. Chen et al. [5] employed the MIL-based GCN method to model the topological relationships between patches, achieving context-awareness. Di et al. [8] introduced hypergraphs into survival prediction and designed strategies to overcome the limitations of sampling scales in constructing large hypergraph models.

2.2 Graph-based Approaches in WSIs

Graph-based MIL approaches, which model the interactions between instances via graphs, have been widely utilized in WSI analysis, solving problems such as cancer classification [6, 21, 22], cancer grading [23, 24, 25], and survival analysis [5, 26]. Chen et al. [5] used GCN [27] in the information propagation process to achieve context-awareness. Zheng et al. [22] applied graph transformer network [28] to the information propagation stage in MIL. Lee et al. [26] proposed a method to aggregate similar patches into a superpatch according to cosine similarity, and used GAT for message passing between superpatches. Despite the significant success of graph-based methods in various tasks, current approaches do not account for the inherent heterogeneity between patches and overlook the guidance of clinical prior knowledge from pathology. Chan et al. [23] highlighted the importance of heterogeneous patch categories and subsequently introduced a heterogeneous graph model called HEAT. HEAT employs HoverNet to classify each patch based on the types of cells within it and introduces heterogeneous edges to model the relationships between heterogeneous nodes.

2.3 Heterogeneous Graph Neural Networks

GNN models such as GCN [27] and GAT [29] have performed profoundly well on several WSI analysis tasks [5, 26]. However, GCN-like models have an inherent assumption of homophily on graphs, and many studies have highlighted their poor performance on heterogeneous graphs [14, 15]. Many works have attempted to address the issue of message passing among heterogeneous nodes within heterogeneous graphs. Early works attempted to solve the problem by aggregating information from multi-hop neighbors or by constructing auxiliary graph structures based on node and structure features [30, 31]. Recently, aggregating global information has emerged as a new direction for addressing challenges in heterogeneous graphs. Li et al. [32] found that capturing more global information substantially improves the model's performance. Some studies introduced class prototypes into models, extracting global information based on node categories [16, 17, 33]. Our model integrates the concepts from state-of-the-art heterogeneous graph methods, constructing a heterogeneous graph, capturing global information based on pathological prior categories. It incorporates the pathological priors of prognosis-relevant tissues into the model, optimizing both the model structure and pathological interpretability.

3 Preliminaries

Heterogeneous Graph. A heterogeneous graph is defined by a graph $\mathcal{G} = (\mathcal{V}, \mathcal{E})$, where $\mathcal{V} = \{v_i\}_{i=1}^N$ is the set of nodes which contains N nodes and $\mathcal{E} \subseteq \mathcal{V} \times \mathcal{V}$ is the set of edges on the graph. A denotes the adjacency matrix of the graph, where A_{ij} represents the edge $e_{i,j}$ between nodes v_i and v_j . X represents the feature matrix of nodes, where x_i is the features of node i . C denotes the node class labels, and c_i is the label for node v_i . Every node v_i within the heterogeneous graph has a category label c_i and a d -dimensional feature $x_i \in \mathcal{X}$, where \mathcal{X} is the embedding space of node features.

Survival Prediction in Whole Slide Images. Given a WSI, we wish to predict the survival risk Y with a prediction model. We use the clinical survival time of patients as labels, and measure

prediction performance by the relative ranking of predicted survival risk against the actual survival times of the patients.

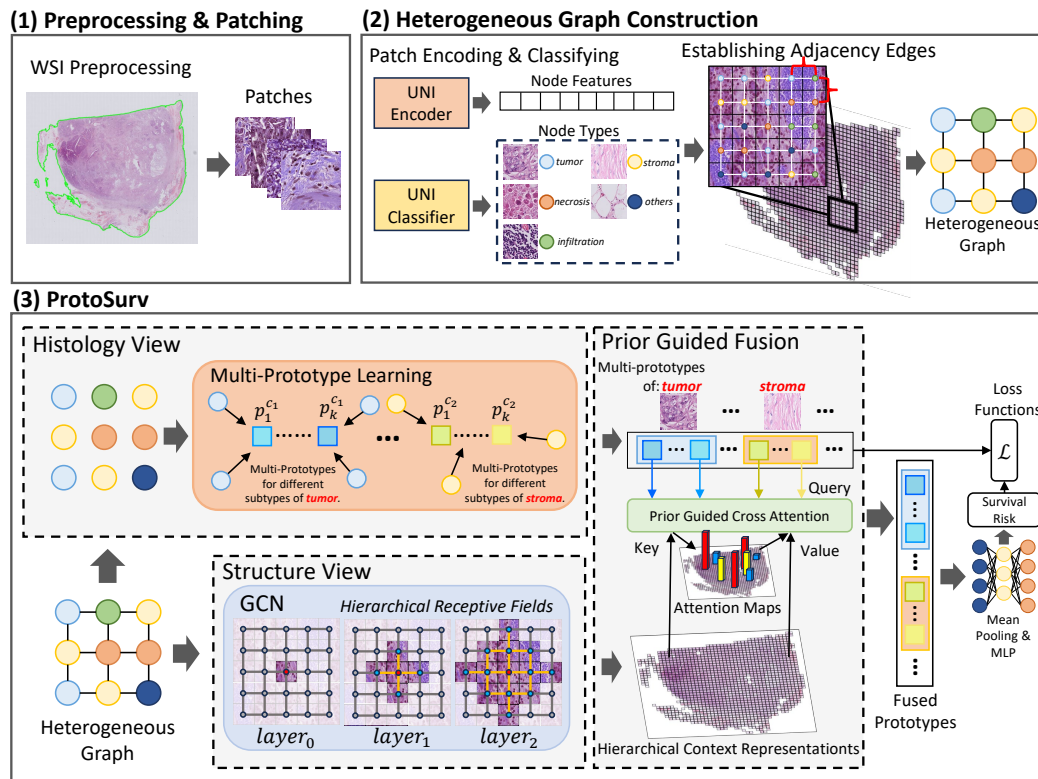


Figure 1: An overview of the ProtoSurv architecture. We use the encoder and classifier pretrained from UNI to obtain feature representations and node types for each patch. Edges are created between spatially adjacent patches to obtain a heterogeneous graph. ProtoSurv decouples the graph into two views: Structure View and Histology View. The Structure View utilizes GCN to provide multi-hop neighborhood information. The Histology View breaks the edge constraints and leverages tissue heterogeneity information to learn global multi-prototype representations for each tissue category. We use additional loss functions to regularize the multi-prototypes.

4 Method

4.1 Construction of Heterogeneous Graph

We first introduce our methodology of modeling the WSI with a heterogeneous graph. We follow Lu et al. [34] to segment foreground regions and split WSIs into non-overlapping patches of size 256×256 by sliding window strategy at $20\times$ magnification. We use the UNI model [35] as a patch encoder to obtain patch embeddings for each patch. Pathology foundation models such as UNI are trained on large-scale pathology datasets and have been validated to represent pathological patches effectively. To incorporate pathological prior knowledge into our model, we focus on tissue regions that are recognized by the current consensus as highly relevant to cancer prognosis: tumor [11], tumor stroma [12], immune infiltration [13], and necrosis [36]. Therefore, we further fine-tune UNI to obtain our patch classifier, which classifies each patch into one of the five categories (tumor, stroma, immune infiltration, necrosis, others). The classifier training and usage details can be found in section 5.2. Each patch is treated as a node in the graph, with the representation encoded by the UNI as the node's features, and the five histological categories as the node's labels. We exploit the graph structure to simulate the topological relationship of patches within the WSI. For each node $v \in V$, we use the k-nearest neighbor algorithm to find k nodes closest to the given node in Euclidean space ($k=4$), and connect edges between node v and its neighboring nodes. All edges have the same

weight. As a result, we obtain a heterogeneous graph G . The edges of the graph model the topological relationships between patches.

4.2 ProtoSurv

To capture scattered but significant information from prognostically relevant tissues while preserving multi-scale context perspective, inspired by Dong et al. [16], we propose ProtoSurv, which decouples the Structure View and the Histology View from the graph, allowing separate learning of hierarchical features and global features of prognosis-related tissue categories.

Structure View. We use GNN to learn the structure representation of WSIs. After the i -th layer of message passing, the i -th output node representations reflect the receptive field within i -hop neighbors centered around the node. We retain all output features from each GCN layer to enable the Structure View to leverage multi-hop neighborhood information. We concatenate the features from each GCN layer along the feature dimension and use a MLP to learn representations from multi-hop neighborhood information, obtaining the final feature H of the Structure View.

$$h^l = \text{GCN}^l(h^{l-1}, A) \in \mathbb{R}^{N \times d} \quad \text{where } h^0 = X, \quad (1)$$

$$H' = \text{concat}[h^1, h^2, \dots, h^L] \in \mathbb{R}^{N \times Ld}, \quad (2)$$

$$H = \text{MLP}(H') \in \mathbb{R}^{N \times d_h}, \quad (3)$$

where X represents the initial feature matrix of nodes, d is the hidden dimension of each GCN layer, L is the number of GCN layers, N is the number of nodes, and d_h is the hidden dimension of the Structure View.

Histology View. In order to fully exploit representations of tissue categories highly related to prognosis within the WSI, Histology View learns prototype representations for each category from global nodes. These prototypes extract feature information within the feature space of certain categories irrespective of their topological edges.

In clinical practice, heterogeneity exists even within the same tissue category[37, 38]. Take stroma as an example, Xu et al. [38] highlighted: "*The tumor stroma is highly dynamic, heterogeneous and commonly tumor-type specific, ...*" Therefore, using a single prototype to represent a whole tissue category is insufficient and often inaccurate. We introduce multiple prototypes for each tissue category, allowing them to capture different phenotypes within tissue feature distributions. For a detailed illustration of multiple subtypes of specific tissue categories, refer to appendix F.

In Histology View, all node features with category c are first averaged to obtain the initial prototype p_{init}^c of category c with the hidden dimension d . For a visual demonstration of the multi-prototype extraction process, please refer to appendix B.

$$p_{init}^c = \text{MEAN}(X_c) \in \mathbb{R}^{1 \times d}, \quad (4)$$

Then, learnable parameters $Z = \{z_1, z_2, \dots, z_k\}$ are used to shift the initial prototype to multi-prototypes, we obtain K distinct prototypes for category c that focus on different subtypes of the specific tissue. The learnable parameters Z are initialized by Xavier initialization [39].

$$P_{prior}^c = \{p_c^1, p_c^2, \dots, p_c^k\} = \{p_{init}^c + z_1, p_{init}^c + z_2, \dots, p_{init}^c + z_k\} \in \mathbb{R}^{K \times d}, \quad (5)$$

We further employ the cross-attention mechanism to aggregate scattered global node information into the prototypes, thereby updating the multi-prototypes. Considering the potential omissions from pseudo-labeled tissue categories from the classifier and the need to focus on other relevant tissues, we extract information from global nodes, not just nodes with category c , to update the prototypes.

$$P_c = \text{Softmax} \left(\frac{[P_{prior}^c W^Q][XW^K]^T}{\sqrt{d}} \right) (XW^V) \in \mathbb{R}^{K \times d}, \quad (6)$$

where d is the hidden dimension, W^Q , W^K and W^V are query, key and value transformation matrices respectively. Finally, we obtain multiple prototypes P for all categories.

$$P = \{P_1, P_2, \dots, P_c\} \in \mathbb{R}^{CK \times d}, \quad (7)$$

The learning of prototypes can be viewed as intentionally adding edges based on pathological priors. Guided by prior knowledge, it allows global messages to pass from nodes to the interested histological category prototypes.

Prior Guided Fusion&Pooling. Once we have all the category prototypes P from the Histology View and hierarchical context embeddings H from the Structure View, we can select regions of interest within multi-hop neighborhoods from Structure View under the guidance of category prototype priors. This process can also be viewed as pooling guided by prior knowledge of the tissue categories of interest. We use the cross-attention mechanism to aggregate Structure View features and pathological multi-prototypes.

$$P_{fusion} = \text{Softmax} \left(\frac{[PW^Q][HW^K]^T}{\sqrt{d}} \right) (HW^V) \in \mathbb{R}^{CK \times d}, \quad (8)$$

where W^Q , W^K and W^V are query, key and value transformation matrices respectively. Guided by histopathological prior knowledge, we select regions of interest at multiple scales through cross-attention, obtaining K representations for each of C tissue categories, resulting in CK categorized representations in total. Finally, we use average pooling to derive the WSI representation h_{slide} , which is used for predicting survival risk Y .

$$h_{slide} = \text{MEAN}(P) \in \mathbb{R}^{1 \times d}, \quad (9)$$

$$Y = g(h_{slide}), \quad (10)$$

where g is a survival prediction head, which is a Multi-Layer Perceptron (MLP) used to predict survival risk Y from WSI-level feature h_{slide} .

Loss Functions. To fully exploit the capabilities of the multiple prototypes of each tissue category, besides the commonly used Cox regression loss [40] \mathcal{L}_{cox} for survival prediction, we introduce compatibility loss and orthogonality loss to regularize training. The compatibility loss regularizes by encouraging the prototypes and representations of a specific category to agree. Meanwhile, the orthogonality loss encourages different prototypes of the same category to be distinct.

Following Dong et al. [16], we modify the compatibility loss function from Snell et al. [41] to handle multiple prototypes within each category. Within the compatibility loss, we treat node features that belong to the same category of the prototypes as positive samples, and those that belong to different categories as negative samples, and use the negative log-likelihood loss to constrain their relationships. First, we map all prototype representations back to the latent space of the node features through a nonlinear mapping layer. Then, we calculate positive similarity scores of positive samples between prototypes and node features belonging to category c , as well as similarities of negative samples with features not belonging to the category. Finally, we aggregate the similarity scores of multiple prototypes into a single score for a specific category, and adopt the negative log-likelihood loss to regulate the relationship between the prototype and node features of the same category. The compatibility loss is computed as follows:

$$s_i^c = \text{MEAN}_{k \in K} \left(\gamma(X^c, f(p_k^c)) \right), \quad (11)$$

$$\mathcal{L}_{comp} = \frac{1}{CN} \sum_{i \in N} \left[s_i^{c_i} + \log \sum_{c' \neq c} \exp(-s_i^{c'}) \right], \quad (12)$$

where N is the number of nodes, C is the number of categories, c_i is the category of i^{th} node, p_k^c is the k^{th} prototype of category c , X^c is the initial node features with category c , f is an MLP and γ is a similarity function. To exploit multi-prototypes, we regularize them so that they are distinct from each other, and focus on different representations of certain tissue categories. We employ orthogonality loss [42] to enforce that the prototypes are orthogonal to each other to achieve this purpose,

$$\mathcal{L}_{ortho} = \left\| \frac{(P^c)^T P^c}{\|(P^c)^T P^c\|_F} - \frac{I_d}{\sqrt{d}} \right\|_F, \quad (13)$$

where $\|\cdot\|_F$ indicates the Frobenius norm, and I_d is an identity matrix. With the α and β as tuning hyperparameters, the full loss function used for training is:

$$\mathcal{L} = \mathcal{L}_{cox} + \alpha \mathcal{L}_{comp} + \beta \mathcal{L}_{ortho}. \quad (14)$$

5 Experiments

5.1 Datasets

The cancer types of WSIs we use are: Breast Invasive Carcinoma (BRCA) (1064 cases), Lower Grade Glioma (LGG) (841 cases), Lung Adenocarcinoma (LUAD) (512 cases), Colon Adenocarcinoma (COAD) (441 cases), Pancreatic Adenocarcinoma (PAAD) (208 cases). All cancer types of WSIs are from The Cancer Genome Atlas (TCGA) repository.¹ We choose these cancer types for training and evaluation using the following criteria: 1) overall survival available, and 2) balanced distribution of uncensored-to-censored patients. During dataset construction, we only preserve formalin-fixed paraffin-embedded hematoxylin and eosin (H&E) slides, given the morphological alterations found in frozen sections.

5.2 Implementation Details

Patch Extraction and Encoding. First, we use OTSU to extract foreground tissue regions. Then we extract a series of non-overlapping patches at $20\times$ magnification with size 256×256 which contain more than 50% foreground tissue. All patches are encoded by UNI [35] into 1024-dimensional vectors, and the encoder does not perform data augmentation during inference.

Patch Classifier Training. We use a small amount of proprietary annotated patches from the TCGA dataset and several public tissue classification datasets [43, 44, 45, 46] to train our classifier. The classifier is based on UNI [35]. We used the 1024-dimensional vector obtained from UNI encoding and added a classification head to classify the patches into 12 categories. We trained the classifier based on the pre-trained weights of UNI, fine-tuning without freezing. Our 12-class classifier achieved an accuracy of 92.5% on the validation set. For details on the 12 categories, refer to section 5.5.

Network Hyper-Parameter. For Histology View, the number of prototypes K per category is set to 8, and the dimension of each prototype is set to 768. Based on pathological prior knowledge, we divided the nodes into five categories. For a detailed discussion on the tissue category selection, refer to section 5.5. For Structure View, the number of GCN layers L is set to 4, the hidden dimension d of each GCN layer h^l are set to 128, The dimension of the final feature H of the Structure View is set to 768. For loss function, the hyperparameter α is set to 0.01, β is set to 0.1.

Training and Evaluation. Adam optimization [47] is adopted to optimize our model. We use Adam optimization with a default learning rate of 2×10^{-4} , weight decay of 1×10^{-5} , and the batch size is set to 8. All experiment results are obtained through 5-fold cross-validation. Concordance index (C-index) [48] and its standard deviation (std) are used to measure the predictive performance in correctly ranking the survival risk of each patient. As qualitative assessment, we use Kaplan-Meier curves [49] to visualize the quality of patient stratification in stratifying low and high-risk patients as two different survival distributions. All the experiments are implemented using PyTorch [50] on a workstation with 4 Nvidia 3090 GPUs.

5.3 Comparison with State-Of-The-Art Methods

We compare our proposed method with several state-of-the-art survival prediction approaches on the above datasets. The comparison methods include: (1) WSISA [19], (2) ABMIL [4], (3) TransMIL [51], (4) DeepAttnMISL [52], (5) Patch-GCN [5], (6) DeepGraphConv [53], (7) HEAT [23], (8) HGSurvNet [54], (9) PANTHER [55]. Among them, WSISA, ABMIL, TransMIL and DeepAttnMISL are classic WSI survival prediction methods; DeepGraphConv and Patch-GCN used GNN to construct homogeneous graphs; HGSurvNet established a hypergraph; HEAT created a heterogeneous graph for classification/staging tasks; PANTHER utilizes an unsupervised prototype network to aggregate global information. For fairness of comparison, we use UNI [35] as the instance feature encoder for all methods. All approaches are evaluated using the same 5-fold cross-validation splits.

Comparison. From the results in table 1, we observe that ProtoSurv achieves best or suboptimal performance across five cancer datasets. Particularly, the PAAD dataset has a small sample size (208 cases), which may lead to overfitting. Therefore, PANTHER, which extracts prototypes in an unsupervised way based on priors and has a minimal number of learnable parameters, demonstrated

¹<https://portal.gdc.cancer.gov/>

superior results on PAAD dataset. Meanwhile, ProtoSurv is only slightly below PANTHER on PAAD and significantly outperforms the other comparative methods, indicating the potential of the domain-prior infused model on small-scale datasets.

Table 1: C-index (mean \pm std) over five cancer datasets. The best and second-best results are highlighted in **bold** and underlined.

	PAAD	BRCA	LGG	LUAD	COAD
WSISA	0.573 \pm 0.021	0.564 \pm 0.054	0.610 \pm 0.013	0.576 \pm 0.045	0.564 \pm 0.034
ABMIL	0.625 \pm 0.063	0.657 \pm 0.064	0.710 \pm 0.048	<u>0.653 \pm 0.059</u>	0.647 \pm 0.036
TransMIL	0.642 \pm 0.037	0.694 \pm 0.053	0.739 \pm 0.034	<u>0.608 \pm 0.040</u>	0.695 \pm 0.051
DeepAttMISL	0.596 \pm 0.034	0.634 \pm 0.017	0.657 \pm 0.076	0.623 \pm 0.049	0.638 \pm 0.069
Patch-GCN	0.618 \pm 0.057	0.647 \pm 0.032	0.713 \pm 0.054	0.635 \pm 0.027	0.652 \pm 0.086
DeepGraphConv	0.615 \pm 0.032	0.535 \pm 0.014	0.617 \pm 0.048	0.597 \pm 0.037	0.621 \pm 0.085
HEAT	0.638 \pm 0.030	0.693 \pm 0.084	0.741 \pm 0.079	0.642 \pm 0.031	0.679 \pm 0.056
HGSurvNet	0.646 \pm 0.064	<u>0.701 \pm 0.067</u>	0.746 \pm 0.043	0.638 \pm 0.064	0.673 \pm 0.043
PANTHER	0.673 \pm 0.082	0.699 \pm 0.019	0.748 \pm 0.046	0.631 \pm 0.029	0.635 \pm 0.056
ProtoSurv (Ours)	0.669 \pm 0.049	0.720 \pm 0.040	0.774 \pm 0.063	0.658 \pm 0.046	0.692 \pm 0.045

5.4 Interpretability

To understand the interaction patterns of the prototypes, we visualize the attention heatmap between the prototypes and the features, as well as the attention components for each prototype in fig. 2. We observed that the attention preferences of multi-prototypes from a category varied. Some prototypes were responsible for extracting global category information, while others focused on discovering interactions between other categories. This indicates that the prototype learning paradigm has the potential to uncover unknown interactions and factors.

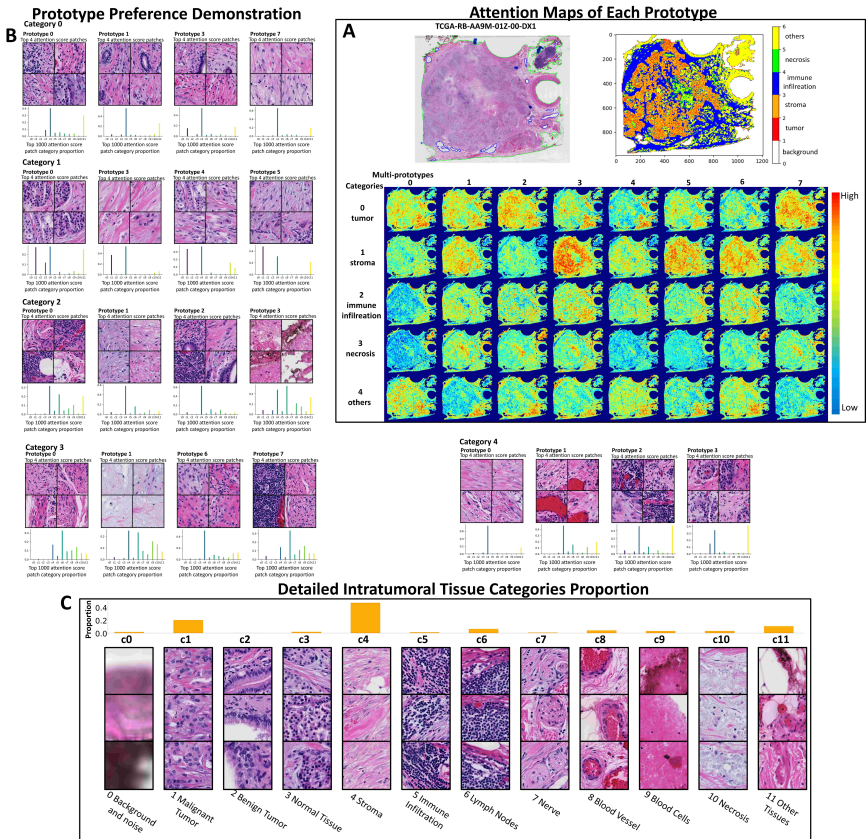


Figure 2: **Heatmap interpretation of prototypes.** (A) Visualizations of attention maps of multi-prototypes in Prior Guided Fusion (PGF) module. (B) Visualization of each prototype's preference: showing the top 4 patches and detailed tissue proportion of the top 1000 patches base on attention scores. (C) Proportions of detailed 12 intratumoral tissue categories.

5.5 Ablation Studies

Component Validation. We decouple the graph into the Structure View and the Histology View to separately extract structure and global features, and use the Prior Guided Fusion & Pooling module to aggregate these features. In this section, we conduct ablation experiments on Histology View (HV), Structure View (SV), and Prior Guided Fusion & Pooling (PGF) modules. Specifically, we implement our ablation as follows: (1) Without Histology View (w/o HV): We retain the features after message passing in the Structure View in eq. (3). Same to PatchGCN [5], we compute attention scores for each node and aggregate them by weighted summation. (In fact, the ablated model without HV is equivalent to PatchGCN.) (2) Without Structure View (w/o SV): We use the multi-prototypes extracted from the Histology View in eq. (7). We test the use of mean pooling and direct concatenation (concat pooling) to obtain the WSI-level representation. (3) Without Prior Guided Fusion & Pooling (w/o PGF): Beside our proposed fusion component, we tested two other aggregation approaches, including direct concatenation fusion and the transpose fusion. Within the concatenation fusion, we directly concatenate the prototypes from HV with the features from SV. Within the transpose fusion, We use the aggregation method from Dong et al. [16], swapping the order of Q and KV in cross-attention to integrate global information into node features, and same to the ablation of HV module, we compute attention scores for each node feature and aggregate them by weighted summation. For detailed information on the ablation of the PGF module, please refer to appendix D.1. Table 2 presents the results. We find that combining the HV and SV modules resulted in improvements, regardless of the aggregation method. This indicates that HV and SV are compatible and complementary. Additionally, our proposed Prior Guided Fusion (PGF) can best utilize information from the two modules to achieve optimal aggregation.

Table 2: Ablation study of the main modules in ProtoSurv.

	PAAD	BRCA	LGG	LUAD	COAD
w/o HV	0.618 ± 0.057	0.647 ± 0.032	0.713 ± 0.054	0.635 ± 0.027	0.652 ± 0.086
w/o SV(mean pooling)	0.624 ± 0.032	0.657 ± 0.049	0.706 ± 0.036	0.646 ± 0.051	0.684 ± 0.044
w/o SV(concat pooling)	0.661 ± 0.057	0.713 ± 0.039	0.766 ± 0.044	0.641 ± 0.037	0.688 ± 0.046
w/o PGF(transpose fusion)	0.653 ± 0.024	0.714 ± 0.041	0.724 ± 0.042	0.653 ± 0.055	0.657 ± 0.074
w/o PGF(concat fusion)	0.652 ± 0.040	0.719 ± 0.024	0.712 ± 0.084	0.662 ± 0.064	0.659 ± 0.058
ProtoSurv	0.669 ± 0.049	0.720 ± 0.040	0.774 ± 0.063	0.658 ± 0.046	0.692 ± 0.045

Classifiers. Classifying each patch into tissue categories requires additional annotated data to train the classifier, which somewhat limits the applicability of our model. To demonstrate the performance of our model in a wider range of scenarios, we test the performance of the model with different publicly available tissue classifiers in this section. We test our model using four different classification methods: (1) Zero-shot classifier from CONCH [56] (CONCH), (2) HoverNet nuclear classification [57] (HoverNet), (3) Pre-compute initial prototypes P_{init}^c of eq. (4) from the features of existing patches of category c (Pre-Proto), (4) K-means (with cluster number $n = 4, 6, 8$). None of the classifiers are specifically optimized for our task. For details on the usage of these classifiers, refer to appendix D.2. Table 3 shows the results of ProtoSurv under different patch classifiers. We find that without specially optimized classifiers, ProtoSurv still exhibited excellent performance. To our surprise, even when simply replacing the classifier with K-means clustering, ProtoSurv still outperforms most comparative methods. The ablation experiments on classifiers demonstrate the robustness of ProtoSurv to classifier choice, showing that ProtoSurv can achieve state-of-the-art performance without the need for specialized classifiers.

Table 3: Effect of different classifiers.

	PAAD	BRCA	LGG	LUAD	COAD
CONCH	0.664 ± 0.051	0.729 ± 0.042	0.776 ± 0.051	0.660 ± 0.056	0.692 ± 0.040
HoverNet	0.649 ± 0.060	0.701 ± 0.070	0.771 ± 0.064	0.656 ± 0.042	0.695 ± 0.036
Pre-Proto	0.668 ± 0.045	0.714 ± 0.062	0.775 ± 0.062	0.652 ± 0.055	0.687 ± 0.038
K-means(n=4)	0.646 ± 0.056	0.683 ± 0.080	0.774 ± 0.069	0.643 ± 0.051	0.690 ± 0.031
K-means(n=6)	0.652 ± 0.027	0.708 ± 0.049	0.772 ± 0.061	0.638 ± 0.046	0.695 ± 0.037
K-means(n=8)	0.656 ± 0.039	0.696 ± 0.054	0.761 ± 0.070	0.648 ± 0.057	0.664 ± 0.045

Choice of Tissue Categories. To infuse our model with prior knowledge, we select node categories based on prior prognosis-related tissues. These ablation experiments are conducted on different tissue categories to validate the effectiveness of incorporating prior knowledge. We train the classifier to categorize 12 types of tissues, which are: 0. background and noise; 1. malignant tumor; 2. benign tumor; 3. normal tissue; 4. stroma; 5. immune infiltration; 6. lymph nodes; 7. nerve; 8. blood vessel; 9. blood cell aggregation; 10. necrosis; 11. other tissues. We refer to these 12 detailed tissue categories as "Detailed Tissue Category (DTC)". Additionally, based on histological knowledge, we coarsely group these 12 tissue categories into 5 broader categories (The numbers in parentheses correspond to the numbers of DTC): Non-tumor tissue (3); tumor (1,2); stroma(4,5,7,8); necrosis(10); others(0,6,9). We refer to these 5 broader categories as "Coarse Tissue Category (CTC)". In our model, we incorporate five tissue categories based on pathological knowledge of prognosis-related tissues: tumor(1,2); stroma(4); immune infiltration(5); necrosis(10); others(0,3,6,7,8,9,11). We refer to these 5 categories from prior knowledge as "Prior Tissue Category (PTC)". Table 4 shows the results of ProtoSurv under three different tissue category settings. We observed that the detailed category setting generally has a negative impact on the model's performance. We believe this is due to the overly detailed categories introducing a substantial amount of irrelevant information to the model. Compared to the Coarse Tissue Category, our proposed Prior Tissue Category achieved the best results, demonstrating the effectiveness of incorporating prior knowledge.

Table 4: Effect of tissue category choices.

	PAAD	BRCA	LGG	LUAD	COAD
DTC	0.641 ± 0.087	0.684 ± 0.063	0.793 ± 0.056	0.652 ± 0.064	0.681 ± 0.051
CTC	0.656 ± 0.066	0.706 ± 0.058	0.776 ± 0.064	0.658 ± 0.050	0.690 ± 0.041
PTC(proposed)	0.669 ± 0.049	0.720 ± 0.040	0.774 ± 0.063	0.658 ± 0.046	0.692 ± 0.045

Further Ablations. We conduct further ablation studies and present additional insights in **appendix C**. Overall, ProtoSurv is robust of errors in classification, hyperparameters of the losses and the number of prototypes. Additionally, we provide statistics on FLOPs and model runtime, and test the complexity and performance of the tiny version of the model. The results indicate that although there is an increase in runtime compared to classical models, it remains acceptable, and the model still achieves decent performance with smaller parameter settings.

6 Discussions

Conclusion. In this paper, we introduce a heterogeneous graph for WSI survival prediction to incorporate pathological prior knowledge by leveraging tissue heterogeneity in tumor, and propose a novel heterogeneous graph message passing framework (ProtoSurv) to integrate pathological prior knowledge into the model. Compared to previous work, ProtoSurv is not solely data-driven but learns under the guidance of prior expert knowledge. We validate our method across multiple cancer datasets, demonstrating that ProtoSurv exhibits higher accuracy and robustness, as well as more stable multi-cancer performance.

Limitations and Future Work. Although ablation experiments have demonstrated the robustness of ProtoSurv across different classifiers, the difficulty of obtaining node categories remains an obstacle to its broader application. In future work, we will explore methods to obtain pseudo-labels directly from node features without relying on additional classifiers.

Acknowledgments and Disclosure of Funding

This study is supported by the National Natural Science Foundation of China (82302316). The authors declare that they have no known competing financial interests or personal relationships that could have appeared to influence the work reported in this paper.

References

- [1] Ming Y Lu, Tiffany Y Chen, Drew FK Williamson, Melissa Zhao, Maha Shady, Jana Lipkova, and Faisal Mahmood. Ai-based pathology predicts origins for cancers of unknown primary. *Nature*, 594(7861):106–110, 2021.

- [2] Richard J Chen, Chengkuan Chen, Yicong Li, Tiffany Y Chen, Andrew D Trister, Rahul G Krishnan, and Faisal Mahmood. Scaling vision transformers to gigapixel images via hierarchical self-supervised learning. In *Proceedings of the IEEE/CVF Conference on Computer Vision and Pattern Recognition*, pages 16144–16155, 2022.
- [3] Bin Li, Yin Li, and Kevin W Eliceiri. Dual-stream multiple instance learning network for whole slide image classification with self-supervised contrastive learning. In *Proceedings of the IEEE/CVF conference on computer vision and pattern recognition*, pages 14318–14328, 2021.
- [4] Maximilian Ilse, Jakub Tomczak, and Max Welling. Attention-based deep multiple instance learning. In *International conference on machine learning*, pages 2127–2136. PMLR, 2018.
- [5] Richard J Chen, Ming Y Lu, Muhammad Shaban, Chengkuan Chen, Tiffany Y Chen, Drew FK Williamson, and Faisal Mahmood. Whole slide images are 2d point clouds: Context-aware survival prediction using patch-based graph convolutional networks. In *Medical Image Computing and Computer Assisted Intervention–MICCAI 2021: 24th International Conference, Strasbourg, France, September 27–October 1, 2021, Proceedings, Part VIII 24*, pages 339–349. Springer, 2021.
- [6] Yonghang Guan, Jun Zhang, Kuan Tian, Sen Yang, Pei Dong, Jinxi Xiang, Wei Yang, Junzhou Huang, Yuyao Zhang, and Xiao Han. Node-aligned graph convolutional network for whole-slide image representation and classification. In *Proceedings of the IEEE/CVF Conference on Computer Vision and Pattern Recognition*, pages 18813–18823, 2022.
- [7] Jiangbo Shi, Lufei Tang, Yang Li, Xianli Zhang, Zeyu Gao, Yefeng Zheng, Chunbao Wang, Tieliang Gong, and Chen Li. A structure-aware hierarchical graph-based multiple instance learning framework for pt staging in histopathological image. *IEEE Transactions on Medical Imaging*, 2023.
- [8] Donglin Di, Jun Zhang, Fuqiang Lei, Qi Tian, and Yue Gao. Big-hypergraph factorization neural network for survival prediction from whole slide image. *IEEE Transactions on Image Processing*, 31:1149–1160, 2022.
- [9] Amanda J Oliver, Peter KH Lau, Ashleigh S Unsworth, Sherene Loi, Phillip K Darcy, Michael H Kershaw, and Clare Y Slaney. Tissue-dependent tumor microenvironments and their impact on immunotherapy responses. *Frontiers in immunology*, 9:325650, 2018.
- [10] Andreas Heindl, Sidra Nawaz, and Yinyin Yuan. Mapping spatial heterogeneity in the tumor microenvironment: a new era for digital pathology. *Laboratory investigation*, 95(4):377–384, 2015.
- [11] Clifton F Mountain. New prognostic factors in lung cancer: biologic prophets of cancer cell aggression. *Chest*, 108(1):246–254, 1995.
- [12] Roy M Bremnes, Tom Dønnem, Samer Al-Saad, Khalid Al-Shibli, Sigve Andersen, Rafael Sirera, Carlos Camps, Inigo Martinez, and Lill-Tove Busund. The role of tumor stroma in cancer progression and prognosis: emphasis on carcinoma-associated fibroblasts and non-small cell lung cancer. *Journal of thoracic oncology*, 6(1):209–217, 2011.
- [13] J Galon, MC Dieu-Nosjean, E Tartour, C Sautes-Fridman, WH Fridman, et al. Immune infiltration in human tumors: a prognostic factor that should not be ignored. *Oncogene*, 29(8): 1093–1102, 2010.
- [14] Hongbin Pei, Bingzhe Wei, Kevin Chen-Chuan Chang, Yu Lei, and Bo Yang. Geom-gcn: Geometric graph convolutional networks. *arXiv preprint arXiv:2002.05287*, 2020.
- [15] Jiong Zhu, Yujun Yan, Lingxiao Zhao, Mark Heimann, Leman Akoglu, and Danai Koutra. Beyond homophily in graph neural networks: Current limitations and effective designs. *Advances in neural information processing systems*, 33:7793–7804, 2020.
- [16] Yanfei Dong, Mohammed Haroon Dupty, Lambert Deng, Yong Liang Goh, and Wee Sun Lee. Protognn: Prototype-assisted message passing framework for non-homophilous graphs. 2022.

- [17] Junjie Xu, Enyan Dai, Xiang Zhang, and Suhang Wang. Hp-gmn: Graph memory networks for heterophilous graphs. In *2022 IEEE International Conference on Data Mining (ICDM)*, pages 1263–1268. IEEE, 2022.
- [18] Pooya Mobadersany, Safoora Yousefi, Mohamed Amgad, David A Gutman, Jill S Barnholtz-Sloan, José E Velázquez Vega, Daniel J Brat, and Lee AD Cooper. Predicting cancer outcomes from histology and genomics using convolutional networks. *Proceedings of the National Academy of Sciences*, 115(13):E2970–E2979, 2018.
- [19] Xinliang Zhu, Jiawen Yao, Feiyun Zhu, and Junzhou Huang. Wsisa: Making survival prediction from whole slide histopathological images. In *Proceedings of the IEEE conference on computer vision and pattern recognition*, pages 7234–7242, 2017.
- [20] Ming Y Lu, Richard J Chen, Dehan Kong, Jana Lipkova, Rajendra Singh, Drew FK Williamson, Tiffany Y Chen, and Faisal Mahmood. Federated learning for computational pathology on gigapixel whole slide images. *Medical image analysis*, 76:102298, 2022.
- [21] Deepak Anand, Shrey Gadiya, and Amit Sethi. Histograms: graphs in histopathology. In *Medical Imaging 2020: Digital Pathology*, volume 11320, pages 150–155. SPIE, 2020.
- [22] Yi Zheng, Rushin H Gindra, Emily J Green, Eric J Burks, Margrit Betke, Jennifer E Beane, and Vijaya B Kolachalama. A graph-transformer for whole slide image classification. *IEEE transactions on medical imaging*, 41(11):3003–3015, 2022.
- [23] Tsai Hor Chan, Fernando Julio Cendra, Lan Ma, Guosheng Yin, and Lequan Yu. Histopathology whole slide image analysis with heterogeneous graph representation learning. In *Proceedings of the IEEE/CVF Conference on Computer Vision and Pattern Recognition*, pages 15661–15670, 2023.
- [24] David Ahmedt-Aristizabal, Mohammad Ali Armin, Simon Denman, Clinton Fookes, and Lars Petersson. A survey on graph-based deep learning for computational histopathology. *Computerized Medical Imaging and Graphics*, 95:102027, 2022.
- [25] Jingwen Wang, Richard J Chen, Ming Y Lu, Alexander Baras, and Faisal Mahmood. Weakly supervised prostate tma classification via graph convolutional networks. In *2020 IEEE 17th International Symposium on Biomedical Imaging (ISBI)*, pages 239–243. IEEE, 2020.
- [26] Yongju Lee, Jeong Hwan Park, Sohee Oh, Kyoungseob Shin, Jiyu Sun, Minsun Jung, Cheol Lee, Hyojin Kim, Jin-Haeng Chung, Kyung Chul Moon, et al. Derivation of prognostic contextual histopathological features from whole-slide images of tumours via graph deep learning. *Nature Biomedical Engineering*, pages 1–15, 2022.
- [27] Thomas N Kipf and Max Welling. Semi-supervised classification with graph convolutional networks. *arXiv preprint arXiv:1609.02907*, 2016.
- [28] Seongjun Yun, Minbyul Jeong, Raehyun Kim, Jaewoo Kang, and Hyunwoo J Kim. Graph transformer networks. *Advances in neural information processing systems*, 32, 2019.
- [29] Petar Velickovic, Guillem Cucurull, Arantxa Casanova, Adriana Romero, Pietro Lio, Yoshua Bengio, et al. Graph attention networks. *stat*, 1050(20):10–48550, 2017.
- [30] Deyu Bo, Xiao Wang, Chuan Shi, and Huawei Shen. Beyond low-frequency information in graph convolutional networks. In *Proceedings of the AAAI conference on artificial intelligence*, volume 35, pages 3950–3957, 2021.
- [31] Susheel Suresh, Vinith Budde, Jennifer Neville, Pan Li, and Jianzhu Ma. Breaking the limit of graph neural networks by improving the assortativity of graphs with local mixing patterns. In *Proceedings of the 27th ACM SIGKDD Conference on Knowledge Discovery & Data Mining*, pages 1541–1551, 2021.
- [32] Xiang Li, Renyu Zhu, Yao Cheng, Caihua Shan, Siqiang Luo, Dongsheng Li, and Weining Qian. Finding global homophily in graph neural networks when meeting heterophily. In *International Conference on Machine Learning*, pages 13242–13256. PMLR, 2022.

- [33] Jin-Gang Yu, Zihao Wu, Yu Ming, Shule Deng, Yuanqing Li, Caifeng Ou, Chunjiang He, Baiye Wang, Pusheng Zhang, and Yu Wang. Prototypical multiple instance learning for predicting lymph node metastasis of breast cancer from whole-slide pathological images. *Medical Image Analysis*, 85:102748, 2023.
- [34] Ming Y Lu, Drew FK Williamson, Tiffany Y Chen, Richard J Chen, Matteo Barbieri, and Faisal Mahmood. Data-efficient and weakly supervised computational pathology on whole-slide images. *Nature biomedical engineering*, 5(6):555–570, 2021.
- [35] Richard J Chen, Tong Ding, Ming Y Lu, Drew FK Williamson, Guillaume Jaume, Andrew H Song, Bowen Chen, Andrew Zhang, Daniel Shao, Muhammad Shaban, et al. Towards a general-purpose foundation model for computational pathology. *Nature Medicine*, 30(3):850–862, 2024.
- [36] Colin H Richards, Zahra Mohammed, Tahir Qayyum, Paul G Horgan, and Donald C McMillan. The prognostic value of histological tumor necrosis in solid organ malignant disease: a systematic review. *Future oncology*, 7(10):1223–1235, 2011.
- [37] Siwon Mun, Hyun Jin Lee, and Pilnam Kim. Rebuilding the microenvironment of primary tumors in humans: a focus on stroma. *Experimental & Molecular Medicine*, pages 1–22, 2024.
- [38] Maosen Xu, Tao Zhang, Ruolan Xia, Yuquan Wei, and Xiawei Wei. Targeting the tumor stroma for cancer therapy. *Molecular cancer*, 21(1):208, 2022.
- [39] Xavier Glorot and Yoshua Bengio. Understanding the difficulty of training deep feedforward neural networks. In *Proceedings of the thirteenth international conference on artificial intelligence and statistics*, pages 249–256. JMLR Workshop and Conference Proceedings, 2010.
- [40] Håvard Kvamme, Ørnulf Borgan, and Ida Scheel. Time-to-event prediction with neural networks and cox regression. *arXiv preprint arXiv:1907.00825*, 2019.
- [41] Jake Snell, Kevin Swersky, and Richard Zemel. Prototypical networks for few-shot learning. *Advances in neural information processing systems*, 30, 2017.
- [42] Filippo Maria Bianchi, Daniele Grattarola, and Cesare Alippi. Spectral clustering with graph neural networks for graph pooling. In *International conference on machine learning*, pages 874–883. PMLR, 2020.
- [43] Jakob Nikolas Kather, Johannes Krisam, Pornpimol Charoentong, Tom Luedde, Esther Herpel, Cleo-Aron Weis, Timo Gaiser, Alexander Marx, Nektarios A Valous, Dyke Ferber, et al. Predicting survival from colorectal cancer histology slides using deep learning: A retrospective multicenter study. *PLoS medicine*, 16(1):e1002730, 2019.
- [44] Mahdi S Hosseini, Lyndon Chan, Gabriel Tse, Michael Tang, Jun Deng, Sajad Norouzi, Corwyn Rowsell, Konstantinos N Plataniotis, and Savvas Damaskinos. Atlas of digital pathology: A generalized hierarchical histological tissue type-annotated database for deep learning. In *Proceedings of the IEEE/CVF Conference on Computer Vision and Pattern Recognition*, pages 11747–11756, 2019.
- [45] Nadia Brancati, Anna Maria Anniciello, Pushpak Pati, Daniel Riccio, Giosuè Scognamiglio, Guillaume Jaume, Giuseppe De Pietro, Maurizio Di Bonito, Antonio Foncubierta, Gerardo Botti, et al. Bracs: A dataset for breast carcinoma subtyping in h&e histology images. *Database*, 2022:baac093, 2022.
- [46] Frauke Wilm, Marco Fragoso, Christian Marzahl, Jingna Qiu, Chloé Puget, Laura Diehl, Christof A Bertram, Robert Klopffleisch, Andreas Maier, Katharina Breininger, et al. Pan-tumor canine cutaneous cancer histology (catch) dataset. *Scientific data*, 9(1):588, 2022.
- [47] Diederik P Kingma and Jimmy Ba. Adam: A method for stochastic optimization. *arXiv preprint arXiv:1412.6980*, 2014.
- [48] Frank E Harrell Jr, Kerry L Lee, and Daniel B Mark. Multivariable prognostic models: issues in developing models, evaluating assumptions and adequacy, and measuring and reducing errors. *Statistics in medicine*, 15(4):361–387, 1996.

- [49] Edward L Kaplan and Paul Meier. Nonparametric estimation from incomplete observations. *Journal of the American statistical association*, 53(282):457–481, 1958.
- [50] Adam Paszke, Sam Gross, Francisco Massa, Adam Lerer, James Bradbury, Gregory Chanan, Trevor Killeen, Zeming Lin, Natalia Gimelshein, Luca Antiga, et al. Pytorch: An imperative style, high-performance deep learning library. *Advances in neural information processing systems*, 32, 2019.
- [51] Zhuchen Shao, Hao Bian, Yang Chen, Yifeng Wang, Jian Zhang, Xiangyang Ji, et al. Transmil: Transformer based correlated multiple instance learning for whole slide image classification. *Advances in neural information processing systems*, 34:2136–2147, 2021.
- [52] Jiawen Yao, Xinliang Zhu, Jitendra Jonnagaddala, Nicholas Hawkins, and Junzhou Huang. Whole slide images based cancer survival prediction using attention guided deep multiple instance learning networks. *Medical Image Analysis*, 65:101789, 2020.
- [53] Ruoyu Li, Jiawen Yao, Xinliang Zhu, Yeqing Li, and Junzhou Huang. Graph cnn for survival analysis on whole slide pathological images. In *International Conference on Medical Image Computing and Computer-Assisted Intervention*, pages 174–182. Springer, 2018.
- [54] Donglin Di, Changqing Zou, Yifan Feng, Haiyan Zhou, Rongrong Ji, Qionghai Dai, and Yue Gao. Generating hypergraph-based high-order representations of whole-slide histopathological images for survival prediction. *IEEE Transactions on Pattern Analysis and Machine Intelligence*, 45(5):5800–5815, 2022.
- [55] Andrew H Song, Richard J Chen, Tong Ding, Drew FK Williamson, Guillaume Jaume, and Faisal Mahmood. Morphological prototyping for unsupervised slide representation learning in computational pathology. In *Proceedings of the IEEE/CVF Conference on Computer Vision and Pattern Recognition*, pages 11566–11578, 2024.
- [56] Ming Y Lu, Bowen Chen, Drew FK Williamson, Richard J Chen, Ivy Liang, Tong Ding, Guillaume Jaume, Igor Odintsov, Long Phi Le, Georg Gerber, et al. A visual-language foundation model for computational pathology. *Nature Medicine*, 30(3):863–874, 2024.
- [57] Simon Graham, Quoc Dang Vu, Shan E Ahmed Raza, Ayesha Azam, Yee Wah Tsang, Jin Tae Kwak, and Nasir Rajpoot. Hover-net: Simultaneous segmentation and classification of nuclei in multi-tissue histology images. *Medical image analysis*, 58:101563, 2019.
- [58] Barbara T Grünwald, Antoine Devisme, Geoffroy Andrieux, Foram Vyas, Kazeera Aliar, Curtis W McCloskey, Andrew Macklin, Gun Ho Jang, Robert Denroche, Joan Miguel Romero, et al. Spatially confined sub-tumor microenvironments in pancreatic cancer. *Cell*, 184(22):5577–5592, 2021.
- [59] Anna Melissa Schlitter, Angela Segler, Katja Steiger, Christoph W Michalski, Carsten Jäger, Björn Konukiewitz, Nicole Pfarr, Volker Endris, Markus Bettstetter, Bo Kong, et al. Molecular, morphological and survival analysis of 177 resected pancreatic ductal adenocarcinomas (pdacs): Identification of prognostic subtypes. *Scientific reports*, 7(1):41064, 2017.

A Overview

In this supplement, We first provide detailed illustrations of ProtoSurv in appendix B. We then provide further ablation studies in appendix C. Then, we provide implementation details of ablation studies in appendix D. We display the KM curve results of ProtoSurv on five datasets in appendix E, and present different subtypes within the intratumoral tissue in pathology in appendix F to support the motivation for our model’s multi-prototype design. Finally, we discuss the potential ethical issues that may arise in our study in appendix G.

B Detailed Illustrations of ProtoSurv

In this section, we provide schematic diagrams illustrating the details of each module’s functionality. In fig. 3, we illustrate the schematic diagram of the GCN providing multi-hop neighborhood information. In fig. 4, we illustrate the process of obtaining multi-prototypes.

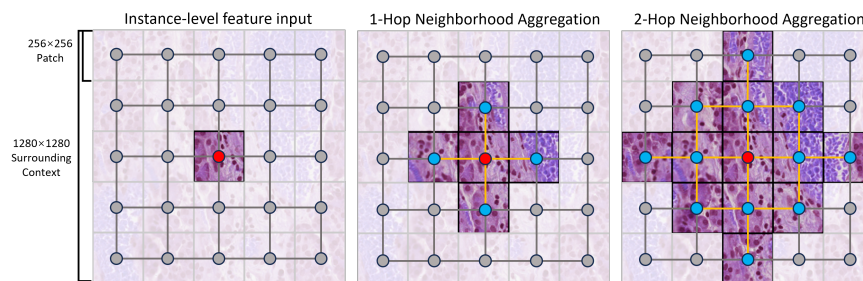


Figure 3: Illustration of the multi-hop neighborhood information within the Structure View.

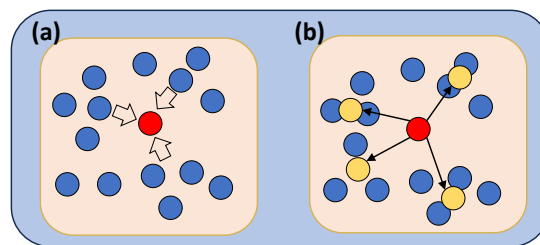


Figure 4: Illustration of the multi-prototypes within the Histology View. (a) Calculate the initial prototype p_{init}^c of a certain category using the average function. (b) Using learnable parameters to shift p_{init}^c to multi-prototypes $P_{prior}^c = \{p_c^1, p_c^2, \dots, p_c^k\}$, to focus on different clusters (subtypes) within the category.

C Further Ablations

Extract Features only using the last or last two Layers in Structure View. We tested using only the last and the last two layers to extract features in SV. As shown in Table 5, although the optimal results varied across different datasets, overall, models that used more layers to extract features achieved better results.

Table 5: Effects of GCN layer number in Structure View.

	PAAD	BRCA	LGG	LUAD	COAD
ProtoSurv (SV all layers)	0.669 ± 0.049	0.720 ± 0.040	0.774 ± 0.063	0.658 ± 0.046	0.692 ± 0.045
ProtoSurv (SV last layer)	0.671 ± 0.042	0.718 ± 0.049	0.764 ± 0.054	0.658 ± 0.060	0.678 ± 0.051
ProtoSurv (SV last two layers)	0.662 ± 0.049	0.723 ± 0.044	0.762 ± 0.037	0.656 ± 0.058	0.693 ± 0.057

Number of Prototypes per Category. To guide the model to focus on different subtype features of a specific tissue category, we assign multiple prototypes for each category. Our model hypothesizes

that using multiple prototypes can capture the feature distribution of different subtypes within certain tissue category. We vary the number of prototypes per class to validate the contribution of multiple prototypes to the results. Fig.5 illustrates ablative experiments of ProtoSurv on PAAD dataset. We observe that: (1) ProtoSurv with a single prototype per class performs almost on par with state-of-the-art methods. (2) ProtoSurv with multiple prototypes per class consistently outperforms the version with a single prototype. The ablative experiments show the effectiveness of using prototypes, as well as the benefits of using multiple prototypes per class over using a single one.

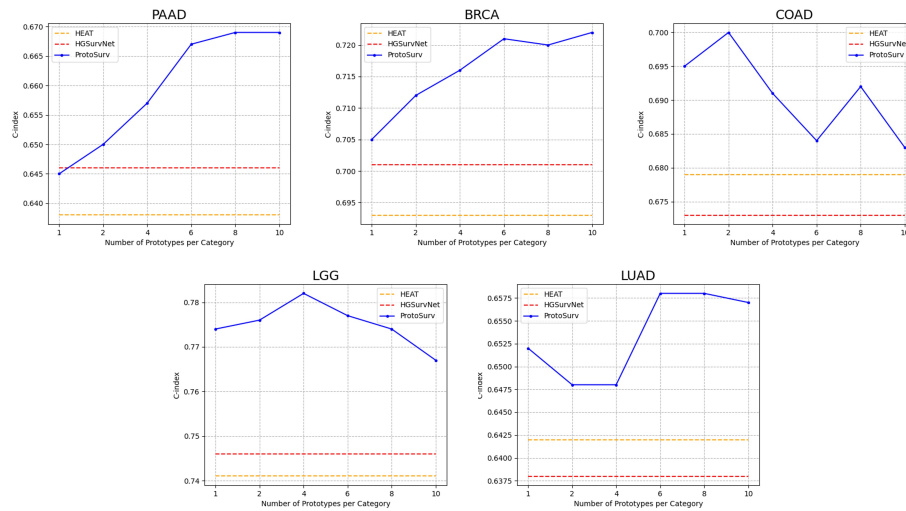


Figure 5: Effect of prototype number per category.

How Errors in Classification Impact the Overall Performance. To minimize the impact of classification errors on the overall performance, in the HV module, we rely only on the node categories provided by the classifier to delineate an initial range. We calculate the average value of the patch features within the category range as the initial prototype, providing an initial preference for the aggregation of each prototype (pathology prior injection). To further illustrate this point, we randomly assign categories for 20% and 30% of the nodes. As shown in table 6, the introduction of random noise does not significantly impact the model's performance, indicating the robustness of our model against classification errors.

Table 6: Effects of classification errors.

	PAAD	BRCA	LGG	LUAD	COAD
ProtoSurv	0.669 ± 0.049	0.720 ± 0.040	0.774 ± 0.063	0.658 ± 0.046	0.692 ± 0.045
20% random	0.671 ± 0.044	0.712 ± 0.045	0.769 ± 0.048	0.658 ± 0.046	0.685 ± 0.051
30% random	0.666 ± 0.047	0.717 ± 0.047	0.777 ± 0.047	0.656 ± 0.043	0.689 ± 0.053

Loss Functions. To fully exploit the capabilities of the multiple prototypes of each tissue categories, we introduce compatibility loss and orthogonality loss to regularize training. In this ablation study, we evaluate the effect of these losses on model performance. Table 7 shows the results of ProtoSurv under different settings of hyperparameters α and β . Compared to cox loss alone, performance improvements for all non-zero values of α and β on both datasets. This provides substantial evidence for the usefulness of the additional loss functions.

Table 7: Effects of compatibility and orthogonality losses.

$\mathcal{L}_{comp}(\alpha)$	$\mathcal{L}_{ortho}(\beta)$	PAAD	BRCA	LGG	LUAD	COAD
0	0	0.651 ± 0.057	0.693 ± 0.046	0.765 ± 0.054	0.661 ± 0.052	0.690 ± 0.046
0.1	0.1	0.656 ± 0.049	0.702 ± 0.052	0.769 ± 0.051	0.654 ± 0.046	0.694 ± 0.038
0.1	0.01	0.658 ± 0.055	0.723 ± 0.037	0.773 ± 0.063	0.654 ± 0.041	0.692 ± 0.043
0.01	0.1	0.669 ± 0.049	0.720 ± 0.040	0.774 ± 0.063	0.658 ± 0.046	0.692 ± 0.045
0.01	0.01	0.662 ± 0.043	0.714 ± 0.025	0.770 ± 0.060	0.658 ± 0.049	0.690 ± 0.044

Computational Requirements. We evaluate the model’s inference time, floating point of operations (FLOPs), model parameters, and maximum GPU memory usage. We use a WSI which contains 32,625 patches as input. The computation time is measured using a Nvidia RTX 3090 GPU. We included PatchGCN [5] for comparison. We additionally test ProtoSurv-tiny under a reduced parameter configuration (prototype dim = 256, hidden dim of SV and HV = 64, prototypes per category = 4), to evaluate the performance degradation of our architecture with fewer parameters and its scalability for more limited hardware. Table 8 presents the computational requirements of the model, while table 9 shows the performance of the model under the tiny setting.

Table 8: Computational requirements.

	Time (s)	FLOPs (G)	Model Parameters (M)	Maximum GPU memory usage (MB)
ProtoSurv	0.29	627.3	39.1	5417
ProtoSurv-tiny	0.21	96.5	4.77	1523
PatchGCN	0.12	30.5	1.19	1570

Table 9: Performance of ProtoSurv-tiny.

	PAAD	BRCA	LGG	LUAD	COAD
ProtoSurv	0.669 ± 0.049	0.720 ± 0.040	0.774 ± 0.063	0.658 ± 0.046	0.692 ± 0.045
ProtoSurv-tiny	0.687 ± 0.049	0.707 ± 0.044	0.756 ± 0.038	0.664 ± 0.039	0.673 ± 0.039

D Implementation Details of Ablation Studies

D.1 Implementation Details of Component Ablation

In this section, we provide a detailed explanation of the ablation settings for the Prior Guided Fusion & Pooling (PGF) module in the component validation ablation experiment. The ablation of the PGF module aggregates the global prototypes into the graph nodes, here the eq. (8) is modified to:

$$H = \text{Softmax} \left(\frac{[HW^Q][PW^K]^T}{\sqrt{d}} \right) (PW^V) \in \mathbb{R}^{N \times d}, \quad (15)$$

Then, we use the weighted aggregation method from Chen et al. [5] to calculate the score for each node and combine them with weighted summation.

$$a_i = \frac{\exp \{w^T (\tanh(MH_i) \odot \text{sigm}(UH_i^T))\}}{\sum_{i=1}^K \exp \{w^T (\tanh(MH_i) \odot \text{sigm}(UH_i^T))\}}, \quad (16)$$

$$h_{slide} = \sum_{i=1}^K a_i H_i, \quad (17)$$

$$Y = \text{MLP}(h_{slide}). \quad (18)$$

This weighted aggregation method is also used in the ablation of the Histology View (HV) module.

D.2 Implementation Details of Classifier Ablation

CONCH. CONCH [56] is a visual-language foundation model. The model can be immediately used for downstream classification tasks due to the aligned visual-language pretraining, which eliminates the need for additional labeled examples for supervised learning or fine-tuning. As shown in fig. 6, we use text prompts to map patches and prompts into the same embedding space, comparing the cosine similarity of the representations to obtain category labels. We constructed our set of predetermined text prompts based on the set of class or category names provided by CONCH. The set of categories and their names we use including: 0. lymphoid infiltrate 1. stroma 2. tumor 3. necrosis 4. others (adipose, background, penmarking, mucin, muscle, benign epithelium)

HoverNet. Follow Chan et al. [23], we test using HoverNet [57] as the classifier in the ablation experiment. HoverNet detects nuclei in each patch and assigns types to these nuclei. By majority

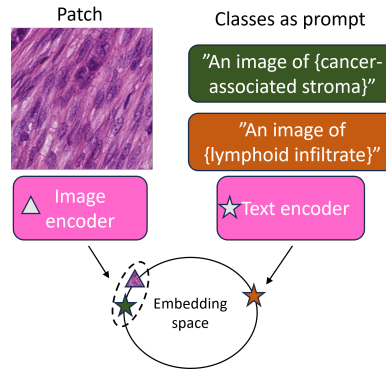


Figure 6: Schematic of zero-shot classification using contrastively aligned image and text encoders of CONCH.

votes, we take the most frequently predicted nucleus type to be the type of the patches. The nuclei types of HoverNet including: neoplastic, dead, inflammatory, non-neoplastic epithelial, connective, no label.

Pre-Proto. In the ablation study of pre-proto, we pre-computed the initial prototypes P_{init}^c for each category c based on the representations of existing category patches. This eliminates the need for the model to get the category of each node for every sample. However, it reduces the model's attention to the specificity of the tissues in each sample. In this ablation experiment, for each cancer type, we randomly sampled 50% of the WSIs and then randomly sampled 10% of the patches within those WSIs to calculate their representations and corresponding tissue categories. Then, we used the average function to calculate the initial prototype P_{init}^c for each category of patches. Under this setting, all samples use the same pre-obtained prototypes, and the Histology View starts directly from eq. (5).

E Kaplan-Meier Curves

We evaluate our method using the Kaplan-Meier curves as presented in fig. 7. In Kaplan-Meier analysis, patients are separated into high-risk and low-risk groups based on predicted risk scores. We use the median value of each validation set as the cut-off. Subsequently, we utilize the log-rank test to compute P-values, which assess the statistical significance of differences between these groups. The results indicate that our method's predictions are statistically significant.

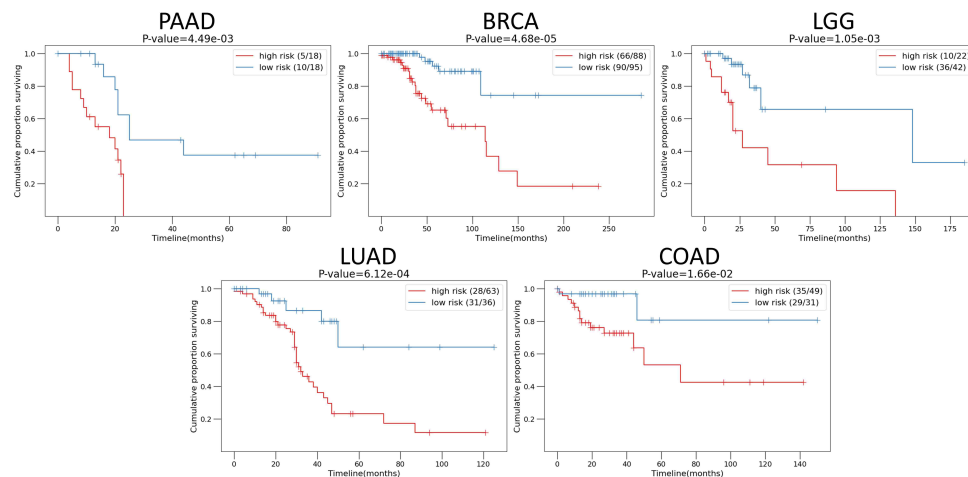


Figure 7: Kaplan-Meier curves of predicted high-risk (red) and low-risk (blue) groups. A P-value < 0.05 indicates statistical significance.

F Illustrations of subtypes of tissue categories

In this section, we present illustrations of various subtypes of certain tissues to support our use of multi-prototypes. fig. 8 illustrate subtypes of stroma; fig. 9 illustrate subtypes of immune infiltration; fig. 10 illustrate subtypes of tumor.

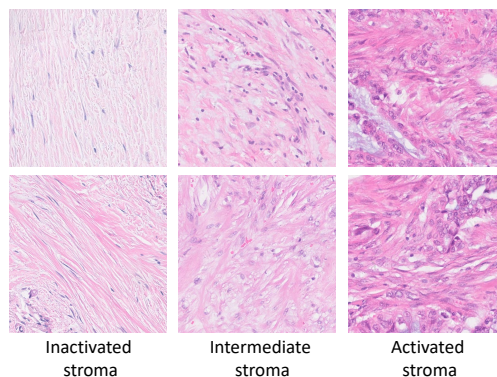


Figure 8: Subtypes of stroma [58].

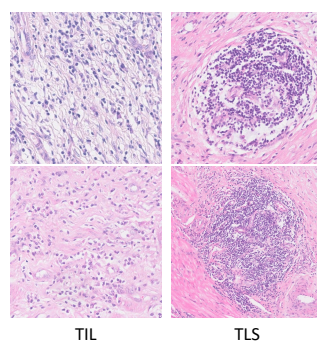


Figure 9: Subtypes of immune infiltration.

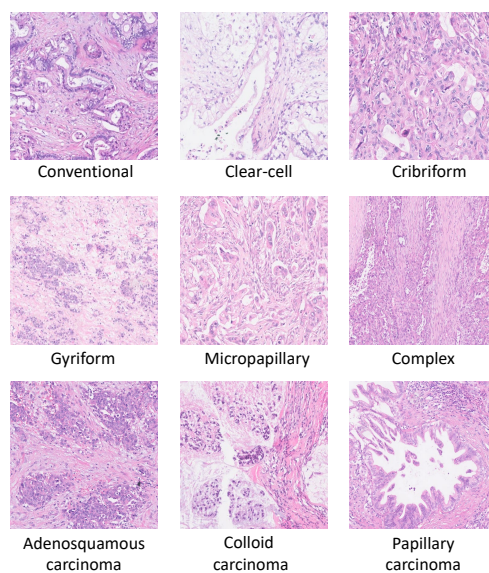


Figure 10: Subtypes of tumor [59].

G Ethical Discussions

Ethical Issues. With regard to possible ethical issues in data collection, The Cancer Genome Atlas (TCGA) repository, as a publicly available dataset that has been used in pathology previous studies, is undoubtedly not ethically questionable. Additionally, we annotated tissue categories for a subset of slices from the TCGA dataset to train the patch classifier. The pathologists involved in the annotation were explicitly informed of the purpose of sample collection, ensuring it would not adversely affect any individuals. Therefore, it does not adversely affect any individual, so there are no ethical or moral issues.

Possible Negative Social Impacts. As the research in this paper deals with the survival prediction of cancer, it is necessary to elaborate here on the possible negative social impacts of this work. Including but not limited to:

- Incorrect diagnosis. AI methods must have the possibility of error, which cannot be avoided, but an incorrect diagnosis will have a significant impact on individuals and society. Therefore, AI tools can only be used as a diagnostic aid, not as a decision maker, and the final decision should still be made by the doctor.
- Leakage of privacy information. In WSI datasets, the identity information of the subjects is highly private, and the leakage of identity information will also have unpredictable and significant impact on individuals and society. Therefore, in this work, we exclusively used WSI data from public datasets, where their privacy information has been well protected.

NeurIPS Paper Checklist

1. Claims

Question: Do the main claims made in the abstract and introduction accurately reflect the paper's contributions and scope?

Answer: [Yes]

Justification: Our abstract and introduction accurately reflect our paper's contributions and scope.

Guidelines:

- The answer NA means that the abstract and introduction do not include the claims made in the paper.
- The abstract and/or introduction should clearly state the claims made, including the contributions made in the paper and important assumptions and limitations. A No or NA answer to this question will not be perceived well by the reviewers.
- The claims made should match theoretical and experimental results, and reflect how much the results can be expected to generalize to other settings.
- It is fine to include aspirational goals as motivation as long as it is clear that these goals are not attained by the paper.

2. Limitations

Question: Does the paper discuss the limitations of the work performed by the authors?

Answer: [Yes]

Justification: We discuss our limitations at section 6.

Guidelines:

- The answer NA means that the paper has no limitation while the answer No means that the paper has limitations, but those are not discussed in the paper.
- The authors are encouraged to create a separate "Limitations" section in their paper.
- The paper should point out any strong assumptions and how robust the results are to violations of these assumptions (e.g., independence assumptions, noiseless settings, model well-specification, asymptotic approximations only holding locally). The authors should reflect on how these assumptions might be violated in practice and what the implications would be.
- The authors should reflect on the scope of the claims made, e.g., if the approach was only tested on a few datasets or with a few runs. In general, empirical results often depend on implicit assumptions, which should be articulated.
- The authors should reflect on the factors that influence the performance of the approach. For example, a facial recognition algorithm may perform poorly when image resolution is low or images are taken in low lighting. Or a speech-to-text system might not be used reliably to provide closed captions for online lectures because it fails to handle technical jargon.
- The authors should discuss the computational efficiency of the proposed algorithms and how they scale with dataset size.
- If applicable, the authors should discuss possible limitations of their approach to address problems of privacy and fairness.
- While the authors might fear that complete honesty about limitations might be used by reviewers as grounds for rejection, a worse outcome might be that reviewers discover limitations that aren't acknowledged in the paper. The authors should use their best judgment and recognize that individual actions in favor of transparency play an important role in developing norms that preserve the integrity of the community. Reviewers will be specifically instructed to not penalize honesty concerning limitations.

3. Theory Assumptions and Proofs

Question: For each theoretical result, does the paper provide the full set of assumptions and a complete (and correct) proof?

Answer: [NA]

Justification: We do not have theoretical results.

Guidelines:

- The answer NA means that the paper does not include theoretical results.
- All the theorems, formulas, and proofs in the paper should be numbered and cross-referenced.
- All assumptions should be clearly stated or referenced in the statement of any theorems.
- The proofs can either appear in the main paper or the supplemental material, but if they appear in the supplemental material, the authors are encouraged to provide a short proof sketch to provide intuition.
- Inversely, any informal proof provided in the core of the paper should be complemented by formal proofs provided in appendix or supplemental material.
- Theorems and Lemmas that the proof relies upon should be properly referenced.

4. Experimental Result Reproducibility

Question: Does the paper fully disclose all the information needed to reproduce the main experimental results of the paper to the extent that it affects the main claims and/or conclusions of the paper (regardless of whether the code and data are provided or not)?

Answer: [\[Yes\]](#)

Justification: We provided detailed descriptions of our experimental setup in section 5.2.

Guidelines:

- The answer NA means that the paper does not include experiments.
- If the paper includes experiments, a No answer to this question will not be perceived well by the reviewers: Making the paper reproducible is important, regardless of whether the code and data are provided or not.
- If the contribution is a dataset and/or model, the authors should describe the steps taken to make their results reproducible or verifiable.
- Depending on the contribution, reproducibility can be accomplished in various ways. For example, if the contribution is a novel architecture, describing the architecture fully might suffice, or if the contribution is a specific model and empirical evaluation, it may be necessary to either make it possible for others to replicate the model with the same dataset, or provide access to the model. In general, releasing code and data is often one good way to accomplish this, but reproducibility can also be provided via detailed instructions for how to replicate the results, access to a hosted model (e.g., in the case of a large language model), releasing of a model checkpoint, or other means that are appropriate to the research performed.
- While NeurIPS does not require releasing code, the conference does require all submissions to provide some reasonable avenue for reproducibility, which may depend on the nature of the contribution. For example
 - (a) If the contribution is primarily a new algorithm, the paper should make it clear how to reproduce that algorithm.
 - (b) If the contribution is primarily a new model architecture, the paper should describe the architecture clearly and fully.
 - (c) If the contribution is a new model (e.g., a large language model), then there should either be a way to access this model for reproducing the results or a way to reproduce the model (e.g., with an open-source dataset or instructions for how to construct the dataset).
 - (d) We recognize that reproducibility may be tricky in some cases, in which case authors are welcome to describe the particular way they provide for reproducibility. In the case of closed-source models, it may be that access to the model is limited in some way (e.g., to registered users), but it should be possible for other researchers to have some path to reproducing or verifying the results.

5. Open access to data and code

Question: Does the paper provide open access to the data and code, with sufficient instructions to faithfully reproduce the main experimental results, as described in supplemental material?

Answer: [Yes]

Justification: We provided the Anonymous GitHub link of our code.

Guidelines:

- The answer NA means that paper does not include experiments requiring code.
- Please see the NeurIPS code and data submission guidelines (<https://nips.cc/public/guides/CodeSubmissionPolicy>) for more details.
- While we encourage the release of code and data, we understand that this might not be possible, so “No” is an acceptable answer. Papers cannot be rejected simply for not including code, unless this is central to the contribution (e.g., for a new open-source benchmark).
- The instructions should contain the exact command and environment needed to run to reproduce the results. See the NeurIPS code and data submission guidelines (<https://nips.cc/public/guides/CodeSubmissionPolicy>) for more details.
- The authors should provide instructions on data access and preparation, including how to access the raw data, preprocessed data, intermediate data, and generated data, etc.
- The authors should provide scripts to reproduce all experimental results for the new proposed method and baselines. If only a subset of experiments are reproducible, they should state which ones are omitted from the script and why.
- At submission time, to preserve anonymity, the authors should release anonymized versions (if applicable).
- Providing as much information as possible in supplemental material (appended to the paper) is recommended, but including URLs to data and code is permitted.

6. Experimental Setting/Details

Question: Does the paper specify all the training and test details (e.g., data splits, hyperparameters, how they were chosen, type of optimizer, etc.) necessary to understand the results?

Answer: [Yes]

Justification: We provided detailed descriptions of the hyperparameter and optimizer setup in section 5.2. We further provided the data splits in our open-source code.

Guidelines:

- The answer NA means that the paper does not include experiments.
- The experimental setting should be presented in the core of the paper to a level of detail that is necessary to appreciate the results and make sense of them.
- The full details can be provided either with the code, in appendix, or as supplemental material.

7. Experiment Statistical Significance

Question: Does the paper report error bars suitably and correctly defined or other appropriate information about the statistical significance of the experiments?

Answer: [Yes]

Justification: We provided the standard deviation in our experimental results.

Guidelines:

- The answer NA means that the paper does not include experiments.
- The authors should answer "Yes" if the results are accompanied by error bars, confidence intervals, or statistical significance tests, at least for the experiments that support the main claims of the paper.
- The factors of variability that the error bars are capturing should be clearly stated (for example, train/test split, initialization, random drawing of some parameter, or overall run with given experimental conditions).
- The method for calculating the error bars should be explained (closed form formula, call to a library function, bootstrap, etc.)
- The assumptions made should be given (e.g., Normally distributed errors).

- It should be clear whether the error bar is the standard deviation or the standard error of the mean.
- It is OK to report 1-sigma error bars, but one should state it. The authors should preferably report a 2-sigma error bar than state that they have a 96% CI, if the hypothesis of Normality of errors is not verified.
- For asymmetric distributions, the authors should be careful not to show in tables or figures symmetric error bars that would yield results that are out of range (e.g. negative error rates).
- If error bars are reported in tables or plots, The authors should explain in the text how they were calculated and reference the corresponding figures or tables in the text.

8. Experiments Compute Resources

Question: For each experiment, does the paper provide sufficient information on the computer resources (type of compute workers, memory, time of execution) needed to reproduce the experiments?

Answer: [\[Yes\]](#)

Justification: We provided information on the computer resources in section 5.2.

Guidelines:

- The answer NA means that the paper does not include experiments.
- The paper should indicate the type of compute workers CPU or GPU, internal cluster, or cloud provider, including relevant memory and storage.
- The paper should provide the amount of compute required for each of the individual experimental runs as well as estimate the total compute.
- The paper should disclose whether the full research project required more compute than the experiments reported in the paper (e.g., preliminary or failed experiments that didn't make it into the paper).

9. Code Of Ethics

Question: Does the research conducted in the paper conform, in every respect, with the NeurIPS Code of Ethics <https://neurips.cc/public/EthicsGuidelines>?

Answer: [\[Yes\]](#)

Justification: All the data we used comes from public datasets, and there are no violations of NeurIPS Code of Ethics.

Guidelines:

- The answer NA means that the authors have not reviewed the NeurIPS Code of Ethics.
- If the authors answer No, they should explain the special circumstances that require a deviation from the Code of Ethics.
- The authors should make sure to preserve anonymity (e.g., if there is a special consideration due to laws or regulations in their jurisdiction).

10. Broader Impacts

Question: Does the paper discuss both potential positive societal impacts and negative societal impacts of the work performed?

Answer: [\[Yes\]](#)

Justification: We discuss potential societal impacts in appendix G.

Guidelines:

- The answer NA means that there is no societal impact of the work performed.
- If the authors answer NA or No, they should explain why their work has no societal impact or why the paper does not address societal impact.
- Examples of negative societal impacts include potential malicious or unintended uses (e.g., disinformation, generating fake profiles, surveillance), fairness considerations (e.g., deployment of technologies that could make decisions that unfairly impact specific groups), privacy considerations, and security considerations.

- The conference expects that many papers will be foundational research and not tied to particular applications, let alone deployments. However, if there is a direct path to any negative applications, the authors should point it out. For example, it is legitimate to point out that an improvement in the quality of generative models could be used to generate deepfakes for disinformation. On the other hand, it is not needed to point out that a generic algorithm for optimizing neural networks could enable people to train models that generate Deepfakes faster.
- The authors should consider possible harms that could arise when the technology is being used as intended and functioning correctly, harms that could arise when the technology is being used as intended but gives incorrect results, and harms following from (intentional or unintentional) misuse of the technology.
- If there are negative societal impacts, the authors could also discuss possible mitigation strategies (e.g., gated release of models, providing defenses in addition to attacks, mechanisms for monitoring misuse, mechanisms to monitor how a system learns from feedback over time, improving the efficiency and accessibility of ML).

11. Safeguards

Question: Does the paper describe safeguards that have been put in place for responsible release of data or models that have a high risk for misuse (e.g., pretrained language models, image generators, or scraped datasets)?

Answer: [NA]

Justification: We do not release data and pretrained models.

Guidelines:

- The answer NA means that the paper poses no such risks.
- Released models that have a high risk for misuse or dual-use should be released with necessary safeguards to allow for controlled use of the model, for example by requiring that users adhere to usage guidelines or restrictions to access the model or implementing safety filters.
- Datasets that have been scraped from the Internet could pose safety risks. The authors should describe how they avoided releasing unsafe images.
- We recognize that providing effective safeguards is challenging, and many papers do not require this, but we encourage authors to take this into account and make a best faith effort.

12. Licenses for existing assets

Question: Are the creators or original owners of assets (e.g., code, data, models), used in the paper, properly credited and are the license and terms of use explicitly mentioned and properly respected?

Answer: [Yes]

Justification: The assets used in our paper are properly credited and the license and terms of use are explicitly mentioned and properly respected.

Guidelines:

- The answer NA means that the paper does not use existing assets.
- The authors should cite the original paper that produced the code package or dataset.
- The authors should state which version of the asset is used and, if possible, include a URL.
- The name of the license (e.g., CC-BY 4.0) should be included for each asset.
- For scraped data from a particular source (e.g., website), the copyright and terms of service of that source should be provided.
- If assets are released, the license, copyright information, and terms of use in the package should be provided. For popular datasets, paperswithcode.com/datasets has curated licenses for some datasets. Their licensing guide can help determine the license of a dataset.
- For existing datasets that are re-packaged, both the original license and the license of the derived asset (if it has changed) should be provided.

- If this information is not available online, the authors are encouraged to reach out to the asset's creators.

13. **New Assets**

Question: Are new assets introduced in the paper well documented and is the documentation provided alongside the assets?

Answer: [\[Yes\]](#)

Justification: The code we provided includes a detailed README document.

Guidelines:

- The answer NA means that the paper does not release new assets.
- Researchers should communicate the details of the dataset/code/model as part of their submissions via structured templates. This includes details about training, license, limitations, etc.
- The paper should discuss whether and how consent was obtained from people whose asset is used.
- At submission time, remember to anonymize your assets (if applicable). You can either create an anonymized URL or include an anonymized zip file.

14. **Crowdsourcing and Research with Human Subjects**

Question: For crowdsourcing experiments and research with human subjects, does the paper include the full text of instructions given to participants and screenshots, if applicable, as well as details about compensation (if any)?

Answer: [\[Yes\]](#)

Justification: All the data we used comes from public datasets.

Guidelines:

- The answer NA means that the paper does not involve crowdsourcing nor research with human subjects.
- Including this information in the supplemental material is fine, but if the main contribution of the paper involves human subjects, then as much detail as possible should be included in the main paper.
- According to the NeurIPS Code of Ethics, workers involved in data collection, curation, or other labor should be paid at least the minimum wage in the country of the data collector.

15. **Institutional Review Board (IRB) Approvals or Equivalent for Research with Human Subjects**

Question: Does the paper describe potential risks incurred by study participants, whether such risks were disclosed to the subjects, and whether Institutional Review Board (IRB) approvals (or an equivalent approval/review based on the requirements of your country or institution) were obtained?

Answer: [\[Yes\]](#)

Justification: All the data we used comes from public datasets.

Guidelines:

- The answer NA means that the paper does not involve crowdsourcing nor research with human subjects.
- Depending on the country in which research is conducted, IRB approval (or equivalent) may be required for any human subjects research. If you obtained IRB approval, you should clearly state this in the paper.
- We recognize that the procedures for this may vary significantly between institutions and locations, and we expect authors to adhere to the NeurIPS Code of Ethics and the guidelines for their institution.
- For initial submissions, do not include any information that would break anonymity (if applicable), such as the institution conducting the review.