

# Map It Anywhere (MIA): Empowering Bird’s Eye View Mapping using Large-scale Public Data

Cherie Ho<sup>1\*</sup> Jiaye Zou<sup>1\*</sup> Omar Alama<sup>1\*</sup> Sai Mitheran Jagadesh Kumar<sup>1</sup>

Benjamin Chiang<sup>1</sup> Taneesh Gupta<sup>1</sup> Chen Wang<sup>2</sup> Nikhil Keetha<sup>1</sup>

Katia Sycara<sup>1</sup> Sebastian Scherer<sup>1</sup>

<sup>1</sup>Carnegie Mellon University <sup>2</sup>University at Buffalo

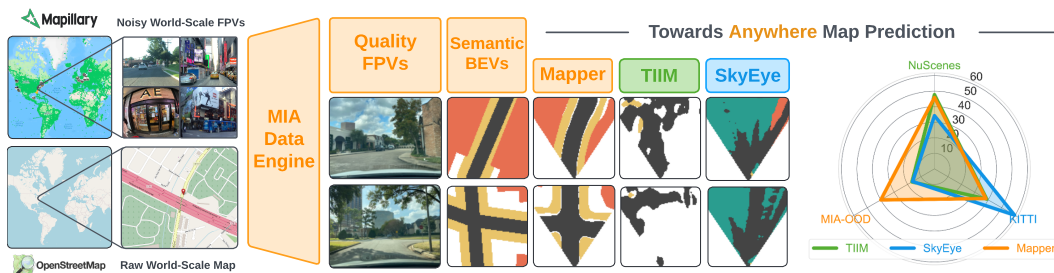


Figure 1: Our Map It Anywhere (MIA) data engine empowers *generalizable* Bird’s Eye View (BEV) map prediction from First-Person View (FPV) images. *Left*: MIA enables seamless automatic curation of quality FPV & semantic BEV map data from *crowd-sourced* platforms, Mapillary & OpenStreetMap. *Right*: Both as a tool for training & benchmarking, MIA enables research towards *anywhere* map prediction. A simple model (Mapper) trained on data from MIA better generalizes on both held-out cities (MIA-00D) & existing benchmarks, while state-of-the-art baselines trained on conventional autonomous vehicle datasets struggle.

## Abstract

Top-down Bird’s Eye View (BEV) maps are a popular perceptual representation for ground robot navigation due to their richness and flexibility for downstream tasks. While recent methods have shown promise for predicting BEV maps from First-Person View (FPV) images, their generalizability is limited to small regions captured by current autonomous vehicle-based datasets. In this context, we show that a more scalable approach towards generalizable map prediction can be enabled by using two large-scale crowd-sourced mapping platforms, Mapillary for FPV images and OpenStreetMap for BEV semantic maps. We introduce Map It Anywhere (MIA), a data engine that enables seamless curation and modeling of labeled map prediction data from existing open-source map platforms. Using our MIA data engine, we display the ease of *automatically* collecting a dataset of *1.2 million* pairs of FPV images & BEV maps encompassing diverse geographies, landscapes, environmental factors, camera models & capture scenarios. We further train a simple camera model-agnostic model on this data for BEV map prediction. Extensive evaluations using established benchmarks and our dataset show that the data curated by MIA enables *effective pretraining for generalizable BEV map prediction*, with zero-shot performance far exceeding baselines trained on existing datasets by 35%. Our analysis highlights the promise of using large-scale public maps for developing & testing generalizable BEV perception, paving the way for more robust autonomous navigation. Website: [mapitanywhere.github.io](https://mapitanywhere.github.io)

\*Equal contribution.

# 1 Introduction

Bird's Eye View (BEV) maps are an important perceptual representation for localization[20, 33], mapping [3, 15, 22, 29, 32], and decision-making tasks [18, 27], particularly for ground robots. They provide a rich, efficient metric representation of the world, enabling spatial reasoning directly in the plane ground robots move in. Given these advantages, autonomous driving systems often employ BEV maps as their primary perceptual representation [18, 42]. Beyond on-road driving, BEV mapping is widely used in other robot domains, such as offroad driving[1, 27, 36], mobile manipulation [40], and exploration [12, 16]. To enable wide deployment of BEV maps as a perceptual representation, there is a requirement for a *general map prediction building block* that performs robustly across different domains and supports effective adaptation to specific tasks/environments.

Despite tremendous advancements in predicting BEV maps from First Person View (FPV) images [15, 26, 32], we find that achieving good out-of-the-box predictions across diverse scenarios remains challenging. This shortcoming mainly stems from the current training & testing paradigm on limited-scale datasets collected using autonomous vehicle (AV) platforms [4, 5, 23, 35, 39]. While these benchmarks have massively propelled the field, they are *principally limited* in capturing large-scale diversity due to the time and cost associated with manual labeling, the limited deployment range, and finally, the use of specific sensor configurations on current AV stacks.

We believe that a complementary training & testing paradigm is necessary to assess the generalizability & robustness of BEV mapping, paving the way for *anywhere* deployment. Hence, starting from first principles, we formulate the key requirements for generalizable BEV mapping as: (a) being able to provide top-down information of key navigation classes, (b) ability to be used by different agents and across different operating regimes, for example, sidewalk prediction is more critical for autonomous wheelchairs, (c) perform reasonably out-of-the-box in unseen locations supporting quick adaptation, and (d) easily adaptable to different hardware configurations such as camera models.

In this context, we explore the question of “**How can one collect a dataset to empower generalizable BEV mapping?**” Specifically, to support research on generalizable BEV mapping, such a dataset needs to (a) contain diverse geographies, terrain types, time of day, and seasons, (b) capture scenarios beyond on-the-road driving, (c) support various camera models, and (d) consists of well-distributed classes and labels for supporting navigation.

To construct such a dataset, our key insight is to leverage two disjoint, crowd-sourced, and *world-scale* public mapping platforms: Mapillary for First-Person View (FPV) images and OpenStreetMap for Bird's Eye View (BEV) semantic maps. Both open-source platforms provide the tools necessary to associate crowd-sourced FPV images with semantic raster maps used for everyday human navigation. We introduce MIA, a data engine which taps into the potential of these mapping platforms to enable seamless curation and modeling of labeled data for generalizable BEV map prediction. Specifically, our data engine enables an evergrowing BEV dataset and benchmark, which exhibits world-scale diversity and supports research on both universal & environment-specific deployment.

In this paper, to showcase the potential of our data engine, we make the following key contributions:

1. We open-source our MIA data engine for supporting automation curation of paired world-scale FPV & BEV data, which can be readily used for BEV semantic map prediction research.
2. Using our MIA data engine, we release a dataset containing  $\sim 1.2$  million high quality FPV image and BEV map pairs covering  $470 \text{ km}^2$ , thereby facilitating future map prediction research on generalizability and robustness.
3. We show that training a simple camera intrinsics-agnostic model with our released datasets results in superior zero-shot performance over existing state-of-the-art baselines on key static classes, such as roads and sidewalks.
4. Through analysis of current performance in urban and rural domains of our benchmark, we show that significant research remains to enable generalizable BEV map prediction.

Overall, MIA establishes a diverse evergrowing dataset & benchmark for map prediction research and showcases how commodity public maps can empower generalizable BEV perception tasks (Fig. 1).

Table 1: **Statistics showcasing the broader scale of MIA in comparison to prior BEV Datasets.** Taxonomy: U: Urban, S: Suburban, R: Rural, O: Offroad, BN: Boston, SP: Singapore. "-": Attributes are not available. "\*": MGL is a BEV localization dataset and does not provide semantic BEV maps suitable for map prediction. "# BEV Annotated Frames": Readily available BEV data. "Automatic Curation": No human intervention in the collection and annotation of the dataset.

Dataset	Locations	km <sup>2</sup> covered	# Annotated BEV Frames	# Camera Models	Domain types				Capture Platform			Suitable for Map Pred.	Automatic Curation
					U	S	R	O	Car	Bik	Ped		
Argoverse [5]	2 in US	1.6 [35]	22K	2	✓	X	X	X	✓	X	X	✓	X
Argoverse 2 [39]	6 in US	-	~108K [43]	2	✓	X	X	X	✓	X	X	✓	X
KITTI-360-BEV [15]	1 in DE	5.3	83K	2	X	✓	✓	X	✓	X	X	✓	X
NuScenes [4]	BN, SP	5.6	40K	2	✓	✓	X	X	✓	X	X	✓	X
Waymo [35]	3 in US	76 [35]	230K	2	✓	✓	X	X	✓	X	X	✓	X
OrienterNet (MGL)* [33]	12 in US/EU	-	760K	4	✓	✓	✓	X	✓	X	X	X	X
<b>MIA (Ours)</b>	<b>6 in US</b>	<b>470</b>	<b>1.2M</b>	<b>17</b>	<b>✓</b>	<b>✓</b>	<b>✓</b>	<b>✓</b>	<b>✓</b>	<b>✓</b>	<b>✓</b>	<b>✓</b>	<b>✓</b>

## 2 Related Work

**Bird’s Eye View Map Prediction:** BEV map prediction involves predicting top-down semantic maps from various sensory modalities to facilitate downstream robotic tasks. Some works rely solely on LiDAR [21], others on multi-view cameras [30], and some on both [24, 46]. These approaches rely on modalities that are expensive and difficult to calibrate. Recently, a growing number of works use *monocular* cameras [14, 15, 25, 26, 31, 32], as they are attractive for their ease of deployment, reduced cost, and higher scalability. However, all these works still rely on current autonomous driving datasets for labels, which limits the scalability of data collection. To address this limitation, SkyEye [15] uses more available front-view semantics to build map predictors without explicit BEV maps. However, this method relies on ground truth FPV semantic masks, which are costly to annotate and scale. In contrast, MIA leverages two readily available world-scale databases to provide diverse and accurate supervision, avoiding the high cost of equipment and manual labor.

Another line of related work is the task of matching FPV images with BEV maps that can be satellite-based [17, 45], planimetric [33, 41], or multi-modal [34]. They often employ techniques to predict a BEV feature map given an FPV image. While useful for retrieval or localization, these feature maps cannot benefit downstream tasks without complex learned decoders, unlike predicted semantic BEV maps, which downstream algorithms like path planning can readily consume.

**Datasets for BEV Map Prediction:** Existing BEV map prediction datasets are often derived from multi-modal autonomous driving datasets [4, 5, 14, 15, 35, 39] that target various tasks, including BEV prediction. These pioneering works depend on manually collected data from costly LiDARs, hence requiring careful calibration with camera setups to ensure accurate correspondence between FPV & BEV data. The BEV is generated by accumulating semantically labeled LiDAR point clouds & then splatting them to BEV, allowing them to capture dynamic and static classes. However, these approaches are **principally limited** in both **scale** and **diversity** due to their high cost, hindering model generalizability. In contrast, MIA uses data available on crowd-sourced platforms and can thus obtain FPV-BEV pairs globally, achieving broader diversity & scale as shown in Table 1.

**Crowd-sourced Datasets for Learning Geometric Tasks:** Crowd-sourced platforms enable open-source contributors to upload diverse in-the-wild data, significantly empowering generalizability in geometric learning tasks. One such notable platform is Mapillary [7], which hosts over 2 billion (and growing) crowd-sourced street-level images from various locations worldwide, captured by different cameras across all seasons and times. Mapillary has been notably used for tasks such as depth estimation [2], lifelong place recognition [38], and visual localization [19, 33]. Most related to our work, OrienterNet [33] addresses visual localization within a large top-down map, curating a large-scale localization dataset provided by crowd-sourced platforms, Mapillary [7] for FPV images and OpenStreetMap [9] (OSM) for large BEV maps. However, the OrienterNet pipeline for rasterizing maps is not suitable for BEV prediction as it renders large maps, mimics OSM style, and includes graphical elements/labels irrelevant to the map prediction task. We illustrate the qualitative differences in Figs. 11 and 12 (shared in the Appendix). MIA further refines the OrienterNet pipeline by enabling automatic curation and collection of semantic maps, alignment of BEV renders with satellite images, and inference of missing OSM sidewalk geometries, thus providing rich semantic maps that are ready for BEV map prediction.

### 3 MIA Data Engine

To construct a dataset for generalizable BEV mapping, we develop a scalable data engine that generates high-quality, diverse FPV-BEV pairs with rich semantic labels. This process, summarized in Fig. 2 and detailed below, follows the criteria discussed in Section 1.

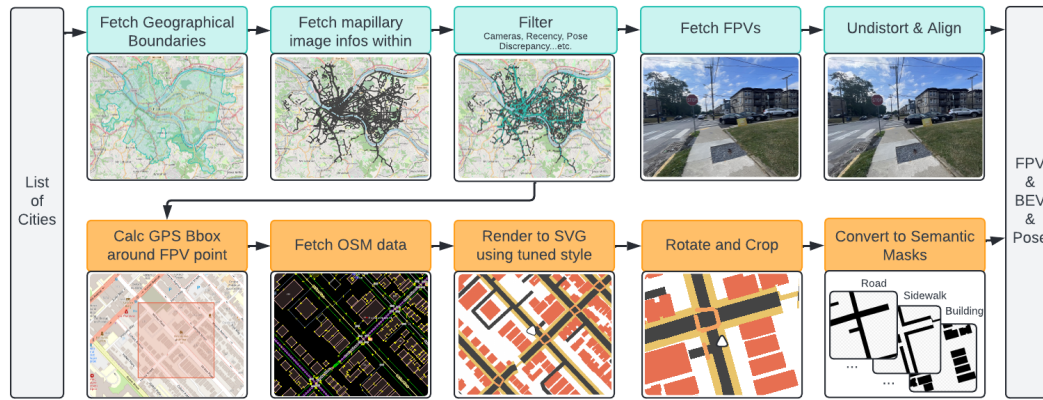


Figure 2: **Overview of how the MIA data engine enables automatic curation of FPV & BEV data.** Given names of cities as input from the left, the top row shows FPV processing, while the bottom row depicts BEV processing. Both pipelines converge on the right, producing FPV, BEV, and pose tuples.

#### 3.1 First Person View (FPV) Retrieval

**Mapillary:** For FPV retrieval, we leverage Mapillary [7], a massive public database, licensed under *CC BY-SA*, with over 2 billion crowd sourced images. The images span various weather and lighting conditions collected using diverse camera models and focal lengths. Furthermore, images are taken by pedestrians, vehicles, bicyclists, etc. This diversity enables the collection of more dynamic and difficult scenarios critical for *anywhere* map prediction. However, this massive pool of data is not readily amenable to deep learning as it contains many noisy, distorted, and incorrectly registered instances. Thus far, few works, such as [33], have leveraged such data providing an impressive retrieval and undistortion pipeline. However, the work relied on careful and manual curation of limited camera models and scenarios. Such approaches are not scalable and cannot leverage the powerful quantity and diversity of Mapillary. Hence, we further refine the OrienterNet [33] data curation framework and develop a fully automated curation pipeline that can harness the full potential of the extensive Mapillary database. We describe the pipeline in the following sections.

**FPV Pipeline:** As demonstrated in Fig. 2, the FPV pipeline starts by manually inputting a list of locations of interest, which can be as simple as inputting the name of the location or as specific as specifying the GPS bounds. The geographical bounds are then fetched using the Nominatim API [8] if needed. The pipeline then converts these bounds to a list of zoom-14 tiles and uses the public Mapillary APIs to query for the image instances within these tiles. Only the retrieved instances that lie within the geographical boundaries of interest are kept. Given the retrieved image IDs, we use another Mapillary endpoint to retrieve image metadata, which includes coordinates rectified through structure from motion, camera information, poses, and timestamps, amongst other details that we use for filtering in the subsequent stage. For more information on the raw data used from Mapillary, please refer to Supplemental Information Q8.

We develop the filtering pipeline by observing hundreds of FPV & BEV pairs and identifying the correlations between good-quality FPVs and their corresponding metadata. The criteria we used included a recency filter, a camera model filter spanning 19 camera models with good RGB quality, a location/angle discrepancy filter that computes the difference between Structure from Motion (SfM) computed and recorded poses, both obtained from Mapillary API, as a proxy for measuring the quality of the geo-registration, and a camera type filter that only includes perspective and fisheye. To promote spatial diversity over sheer quantity, we filter out images within a 4-meter radius of another image from the same sequence. After filtering, we retrieve the RGB images from Mapillary



and feed them through an undistortion pipeline adapted from [33]. The undistortion is critical for fisheye images to ensure their pixel-aligned features can be correctly lifted into BEV space. Using this pipeline, we can retrieve high-quality images from anywhere in the world, tapping into the power of the Mapillary platform.

### 3.2 Birds Eye View (BEV) Retrieval

**Open Street Map (OSM):** For BEV retrieval, we leverage OSM [9], a global crowd-sourced mapping platform open-sourced under Open Data Commons Open Database License (ODbL). OSM provides rich vectorized annotations for streets, sidewalks, buildings, etc. However, OSM data cannot be easily used for map prediction as (a) OSM often does not encode critical sidewalk geometry, (b) structured formats like OSM maps prove difficult to train on, (c) off-the-shelf rendering pipelines target human consumption often encoding information irrelevant for BEV prediction (such as textual labels) and do not care about pixel aligning maps with satellite imagery, thereby encoding inaccurate road widths in many instances. Recognizing the need to create our own rasterization pipeline, we build on top of the MIT-licensed MapMachine project [37] and study hundreds of satellite/map pairs to achieve rasterization that is more pixel-aligned with satellite imagery. We further carefully map the hundreds of elements in OSM to a handful of informative dominant semantic labels.

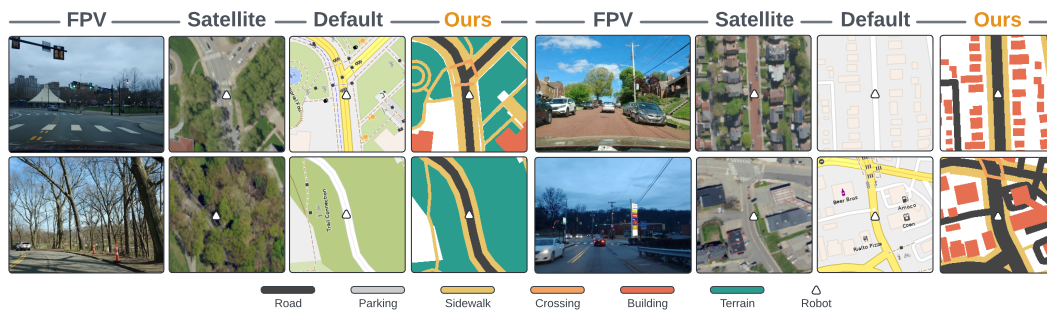


Figure 3: **Comparison of default MapMachine-style rendering with the MIA-style.** The figure shows our rendering removes irrelevant information, clusters key semantic categories, aligns better with satellite and is able to provide more accurate sidewalk geometry correctly. Satellite imagery is not part of the MIA data engine and was obtained from [13] only for tuning map rendering.

**BEV Generation Pipeline:** BEV retrieval starts after the filtering stage in FPV retrieval as illustrated in Fig. 2. Given coordinates in the World Geodetic System (WGS-84) frame for each image, we project each point onto a Cartesian UTM coordinate frame, estimated separately for each city/location. Next, we calculate an ego-centric bounding box of size  $(\alpha + \beta + \delta)^2$  at a resolution of  $\rho$  meters per pixel. Here,  $\alpha$  represents the requested image dimension,  $\beta = \alpha - \frac{\alpha}{\cos(\frac{\pi}{4})}$  is the padding added to accommodate rotations without introducing empty space, and  $\delta$  is the padding added to avoid missing any OSM elements that may not fall within the original box. To adhere to the OSM API, we project boxes back to WGS-84 coordinates before retrieving OSM data for every image. We then utilize our version of MapMachine (enhanced to infer missing sidewalks from OSM) with a carefully tuned, satellite-aligned map style to render the data into SVG format. Next, we rotate the rendered image so that the robot is looking ‘up’ in the BEV image plane, aligning it with the forward direction of the FPV plane. Finally, we rasterize the SVG into a semantic mask containing six static classes (Road, Parking, Sidewalk, Crossing, Building & Terrain), as shown in Fig. 3, to produce the final BEV.

## 4 Empowering Map Prediction with the MIA Data Engine

### 4.1 Sampling the MIA Dataset

We show the utility of the MIA data engine by sampling six different urban-centered locations, extending to the suburbs. We selected highly populated cities - New York, Chicago, Houston, and Los Angeles - to collect challenging scenarios with diverse and dense traffic. Additionally, we included Pittsburgh and San Francisco for their unique topologies. For BEV retrieval, we set  $\alpha = 224$ ,  $\delta = 50$ , and  $\rho = 0.5$ , resulting in what we believe is the largest public BEV prediction dataset, comprising

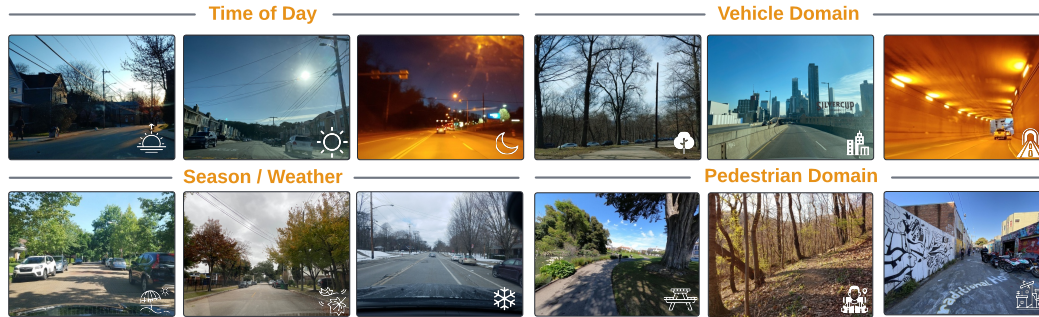


Figure 4: **Samples from the MIA dataset:** Highlighting diversity in time of day, seasons, weather and capture scenarios from vehicles & pedestrians.

approximately 1.2 million FPV-BEV pairs, as shown in Table 1. To illustrate the diversity of the data, we adapt the coverage metric proposed by [35] in which each image instance covers a radius of 150 meters around its pose. For our sampled dataset, we calculate the coverage at a radius of 112 meters consistent with our chosen  $\alpha$  value. As shown in Table 1, our sampled dataset covers  $470 \text{ km}^2$ , far surpassing all existing BEV prediction datasets by  $6\times$ . This highlights the immense potential of our *scalable* MIA data engine to produce large quantities of annotated FPV-BEV pairs covering extensive geographies and with varying camera models and focal lengths, as highlighted in Fig. 4.

To further benchmark the generalization capability of map prediction models in more extreme settings, we further sample a small ( $\sim 1.1K$ ) rural/remote dataset, which we denote as MIA-Rural. This dataset has a distribution very different from the urban-centered samples. We selected locations with distinct visual appearances, namely Willow (Alaska), Ely (Nevada), and Owen Springs (Australia). To push the boundaries of generalization testing, we disabled the camera model filter for this test set, thereby incorporating a variety of challenging camera models into this extreme dataset.

#### 4.2 Mapper: Training a camera intrinsics-agnostic baseline model

We train a model, Mapper, with MIA to validate the need for such a large-scale and diverse dataset by testing its generalization capability. Leveraging the diversity of the Mapillary dataset requires a model architecture capable of handling various image characteristics, such as focal lengths and image size. Additionally, following OrienterNet [33], it is reasonable to assume that the robot or phone has orientation information (IMU), and we aim to incorporate this information into our map predictions.

Our goal is to learn a model that takes in a monocular image  $\mathbf{I}$  to predict a gravity-aligned BEV semantic map  $\mathbf{Y}$ . Formally, given an image  $\mathbf{I} \in \mathbb{R}^{3 \times H \times W}$ , its intrinsic matrix  $\mathbf{C} \in \mathbb{R}^{3 \times 3}$ , and its extrinsic matrix  $\mathbf{E} \in \mathbb{R}^{3 \times 4}$ , we seek to produce a multi-label binary semantic map in gravity-aligned frame  $\mathbf{Y} \in \mathbb{R}^{X \times Z \times K}$  where  $K$  is the number of semantic classes. To achieve this, we build on OrienterNet [33], designed for top-down map localization, as the front-end architecture. This choice accommodates different camera characteristics and pose information from IMUs, thereby leveraging the orientation data from OSM and Mapillary. We add a decoder head on the BEV features (obtained post 2D-to-3D lifting of FPV features) to predict a semantic map, thereby maintaining simplicity in the model architecture. Furthermore, to improve generalization capability, we replace the ResNet encoder with the DINOv2 encoder [28]. For training, we resize and pad images to a  $512 \times 512$  square, applying weighted Dice and Binary Cross Entropy Loss to the BEV pixels within the image frustum. We use DINOv2 ViT-B/14 [28] with registers [10] as the image encoder. We further augment the dataset with brightness, contrast, and color jittering. We train with a batch size of 128 for 15 epochs, which takes approximately 4 hours using 4 NVIDIA-H100 GPUs. The supplementary material provides more details on the model and training, along with a figure of the model pipeline.

## 5 Experimental Setup

To evaluate generalizability, we test our Mapper model and baselines on multiple datasets, including our diverse MIA dataset and conventional map prediction datasets.

**Conventional Datasets:** We evaluate our model on BEV map segmentation benchmarks: NuScenes [4] and KITTI360-BEV [15], to demonstrate the generalizability of a model trained on MIA when applied to established datasets. We follow the BEV generation procedure in [31] for NuScenes. Both datasets are collected from on-road vehicles and present challenges such as occlusions, different times of day, and varying weather conditions. We adhere to the conventional (geographically non-overlapping) data set splits: Roddick et al.'s [31] split for NuScenes and Gosala et al.'s split [15] for KITTI360-BEV. Since we focus on static class map prediction, we exclude dynamic elements from the dataset labels before training. For NuScenes, we use only the static map layers, and for KITTI360-BEV, we remove dynamic object labels. In the experiments, we use the front-facing camera data to evaluate monocular camera BEV map prediction. Class mappings between the datasets are provided in Table 6 of the appendix.

**MIA Dataset:** We utilize the MIA dataset to assess performance in diverse urban and rural settings not captured by previous datasets, including held-out environments. Specifically, we split our dataset into two settings: MIA-ID (New York, Los Angeles, San Francisco, Chicago) represents in-distribution urban areas, MIA-OOD (Houston, Pittsburgh) tests the generalization ability in held-out urban settings. Furthermore, we use MIA-Rural to provide a more challenging out-of-distribution evaluation. For each location, we generate an 80% train / 10% validation / 10% test split, ensuring the splits are geographically disparate as illustrated in Fig. 10 of the appendix.

**Metrics:** We adhere to standard conventions [15, 32] to calculate the Intersection-over-Union (IoU) score using binarized predictions with a threshold of 0.5. The IoU score is computed over the observable area as defined by the visibility mask, based on LiDAR observations or the visibility frustum. Since there is no LiDAR sensing in the MIA dataset, we generate a heuristic-based visibility mask by raycasting from the robot's position, ending 4 pixels into a building. To be consistent with SkyEye evaluations [15], in KITTI360-BEV, we also include occluded areas within image frustum for IoU calculation. For all datasets, we performed comparisons over a 50m x 50m area with a resolution of 0.5m/pixel. Consistent with prior work [15, 32], we report the macro-mean IoU over all classes. In addition, for a fair comparison across different methods and datasets, we report the macro-mean IoU over the two classes common in all datasets, *road & sidewalk*.

**Baselines:** We compare our results with previously published methods that focus on the monocular single-camera setting, specifically Translating Images into Maps (TIIM) [32], which was trained and tested on NuScenes [4], and SkyEye, which was tested on KITTI360-BEV [15]. While newer methods have been proposed [6, 44], TIIM is the most recent method with available code, to our knowledge. We follow the training protocols described in the respective papers and code, with slight modifications to train for static classes. For evaluation, images are processed to meet the requirements of each method. To test the baseline models on datasets they were not trained on, we follow Gosala et al. [15] and resize the image to match the focal length of the model's training dataset. More details on baseline implementation are provided in supplementary material and appendix.

## 6 Results & Discussion

We firstly evaluate Mapper zero-shot against the baselines. Next, we test MIA's effectiveness for pre-training by finetuning Mapper on limited data from an existing dataset. Finally, we stress test all models in extreme out-of-distribution scenarios to highlight future opportunities enabled by MIA.

### 6.1 MIA can go more "anywhere" out-of-the-box

Table 2 demonstrates the generalizability of Mapper, trained with the MIA-ID dataset, over both zero-shot & fully-supervised baselines, in particular on the NuScenes and MIA-OOD environments. Fig. 5 visually compares the model predictions, where Mapper provides more realistic predictions across the datasets compared to the zero-shot baseline, which often fails due to the distribution change caused by unseen location, different camera models, or severe weather conditions. When comparing average IoU of Road and Sidewalk, Mapper achieves superior zero-shot result in NuScenes *val* [4] and MIA-OOD, with improvements of 33% and 144%, respectively. Notably, in NuScenes and MIA-OOD, Mapper performs comparably to fully supervised methods (trained with in-domain data) in road and sidewalk classes. While Mapper performs consistently with TIIM (trained on NuScenes) when tested on KITTI360-BEV [15], Mapper provides more realistic predictions overall, especially in non-road regions where TIIM tends to overpredict roads. However, due to the limitations of

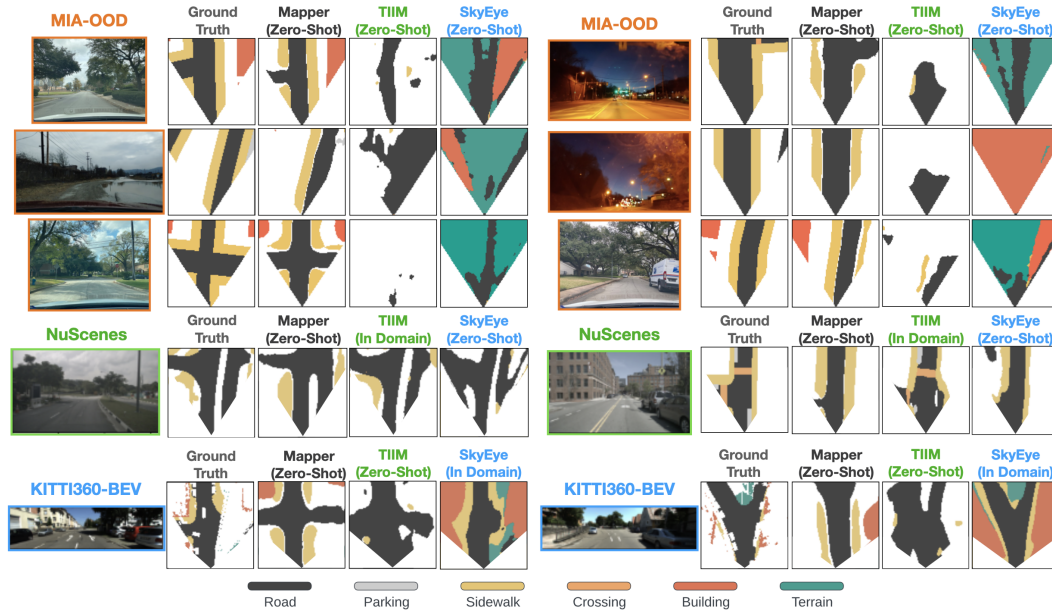


Figure 5: Mapper **consistently provides more precise & realistic zero-shot predictions across all the datasets**. Notably, Mapper, empowered by MIA data, can produce zero-shot predictions which are comparable to the fully-supervised baselines which have been trained on in-domain data.

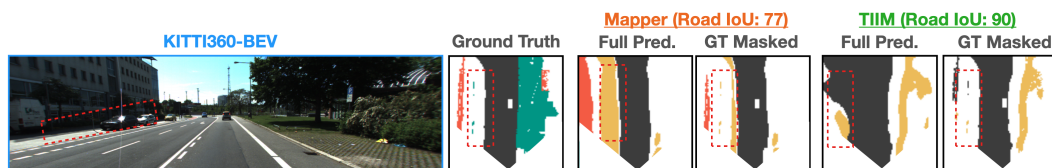


Figure 6: **Lack of complete labels in KITTI360-BEV [23] dilutes quality of benchmarking**. For example, while Mapper predicts sidewalk and road reasonably in this frame, the lack of sidewalk labels in the ground truth results in a misrepresentative IoU. Meanwhile, TIIM's [32] road IoU is artificially higher, despite the incorrect road prediction on the left.

KITTI360-BEV, where much of the map is unlabeled and IoU is only measured in labeled regions, as illustrated in Fig. 6, it is challenging to perform effective benchmarking and comparisons.

## 6.2 Pre-training on MIA enables effective fine-tuning with limited data

We also test if the MIA dataset can provide effective pretraining for new map prediction tasks. Specifically, we finetune Mapper with 10% and 1% of NuScenes data. For comparison, we use the same data split to train TIIM [32]. To fine-tune Mapper, we map the new training dataset classes to MIA classes as described in Table 6 of appendix. Details on training, fine-tuning and data splits are available in the appendix and supplementary material. Table 2d shows that Mapper can be effectively fine-tuned on specific environments with limited new map prediction data. Notably, the experiment suggests that MIA provides effective pretraining for map prediction, as fine-tuning the pre-trained Mapper yields improved results compared to training TIIM solely on the data subset.

## 6.3 MIA provides challenging settings for future work on anywhere map prediction

To test model generalizability, we further curate MIA-Rural, which is far from the training distribution. Fig. 7 shows an example predictions from highway images where all models, including our proposed Mapper, fail to generalize. Quantitatively, on the entirety of MIA-Rural, the average IoU between road and sidewalks (Avg. R, S) is 21.04 for Mapper, 20.55 for TIIM [32] and 18.62 for SkyEye [15]. This further illustrates the research need for an *anywhere* map prediction dataset.





Figure 7: **Challenging scenarios mined using the MIA data engine:** We curate highway images far from urban environments to stress test models. This showcases our ability to extract challenging and high-impact test scenarios where current models, including Mapper, do not perform well.

Table 2: Benchmarking across all the datasets in both zero-shot & finetuning setups.

Methods	In-Domain	Road	Crossing	Sidewalk	Carpark	Avg.	Avg. R, S	Methods	In-Domain	Road	Sidewalk	Building	Terrain	Avg.	Avg. R, S
TIIM [32]	✓	68.63	29.41	27.03	7.70	33.19	47.83	SkyEye [15]	×	52.57	0.00	15.47	0.00	17.01	34.02
SkyEye [15]	×	52.57	0.00	15.47	0.00	17.01	34.02	TIIM [32]	×	67.18	10.41	0.0	0.0	19.40	38.80
Mapper	×	64.22	0.06	27.71	0.04	23.01	45.97	Mapper	×	58.92	11.99	25.08	0.60	24.15	35.46

(a) Zero-Shot NuScenes [4]

(b) Zero-Shot KITTI360-BEV [15]

Methods	In-Domain	Road	Crossing	Sidewalks	Building	Parking	Terrain	Avg.	Avg. R, S
Mapper+OOD	✓	58.28	0.05	30.75	13.80	13.79	6.70	20.56	44.52
TIIM [32]	×	32.74	0.00	1.47	0.00	0.00	0.00	5.70	17.11
SkyEye [15]	×	33.09	0.00	1.18	5.70	0.00	2.67	7.11	17.14
Mapper	×	54.65	0.06	27.55	15.78	2.66	1.83	17.09	41.10

(c) Zero-Shot MIA-OOD

Methods	Data %	Drivable	Crossing	Walkway	Carpark	Mean
Mapper	0%	61.30	0.51	25.50	0.00	21.83
TIIM [32]	1%	57.80	3.11	12.66	0.10	18.42
Mapper	1%	69.70	0.20	26.44	1.83	24.54
TIIM [32]	10%	61.12	23.69	14.52	1.53	25.22
Mapper	10%	73.10	10.80	19.21	3.37	27.12
TIIM [32]	100%	68.63	29.41	27.03	7.70	33.19

(d) Finetuning Mapper on NuScenes [4] data

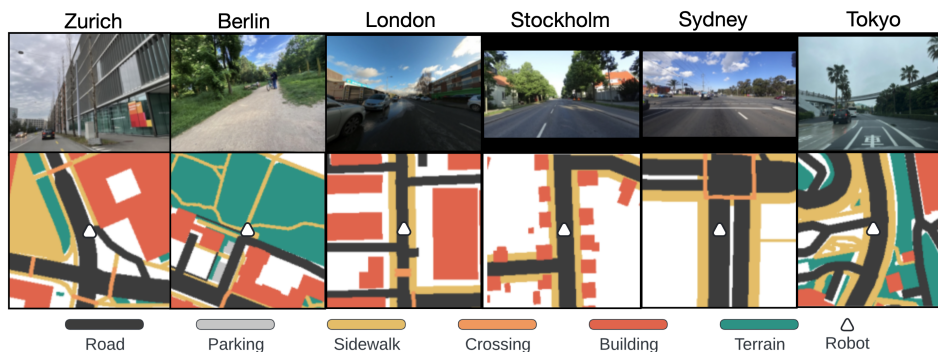
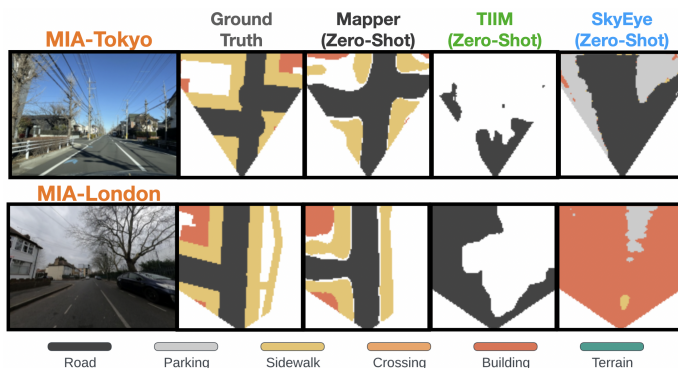


Figure 8: Example pairs of First-Person-View images & Birds-Eye-View semantic maps **effortlessly extracted** by our MIA data engine from non-US cities.



Methods	Avg. over Classes	Avg. R, S
TIIM [32]	10.78	21.21
SkyEye [15]	13.77	20.87
Mapper	17.66	37.26

Table 3: Zero-shot IoU results on MIA-non-US data split.

Figure 9: Zero-shot predictions in non-US cities. Mapper consistently provides more accurate & realistic zero-shot predictions.

#### 6.4 MIA data engine can also effortlessly extract data beyond U.S. cities

To show that our MIA data engine can effortlessly curate data from other global locations, we curate MIA-non-US from 6 non-US cities spanning 3 continents: Europe (London, Stockholm, Berlin,



Zurich), Asia (Tokyo), and Australia (Sydney). Fig. 8 shows example data pairs. Furthermore, we leveraged this data to evaluate the generalizability of existing methods and Mapper. Results in Tab. 3 and Fig. 9 show that our model Mapper consistently provides more accurate and realistic zero-shot predictions compared to baselines trained on conventional datasets.

## 7 Conclusion

In this work, we propose MIA, a data curation pipeline aimed at empowering *anywhere* BEV map prediction from FPV images. We release a large MIA dataset obtained through the data engine giving the research community access to  $\sim 1.2\text{M}$  FPV-BEV pairs to accelerate *anywhere* map prediction research. Results from training on the dataset show impressive generalization performance across conventional map prediction datasets, while on the other hand, provides challenging test cases for the research community. Our approach departs from the traditional and expensive autonomous vehicle data collection and labeling paradigm, towards *automatic curation of readily-available crowd-sourced data*. We believe this work seeds the first step towards *anywhere* map prediction.

### 7.1 Limitations, Biases, Social Impact

While we show promising generalization performance on conventional datasets, we note that label noise inherently exists, to a higher degree than manually collected data, in crowd-sourced data, in both pose correspondence and in BEV map labeling. Such noise is common across large-scale automatically scraped/curated benchmarks such as ImageNet [11]. Moreover, our approach does not capture dynamic classes as they do not exist in static maps. However, we see our approach as indispensable for scale and diversity yet complementary to conventionally obtained datasets.

**Negative Societal Impact:** Our work relies heavily on crowd-sourced data, which places the burden of data collection on open-source contributors. Additionally, while the FPV images and metadata from Mapillary are desensitized, there remains a potential risk of reconstructing private information.

## Acknowledgments and Disclosure of Funding

The work is funded by National Institute of Advanced Industrial Science and Technology (AIST), Army Research Lab (ARL) awards W911NF2320007 and W911NF1820218 and W911NF20S0005, Defence Science and Technology Agency (DSTA). Omar Alama is partially funded by King Abdulaziz University. This work used Bridges-2 at PSC through allocation *cis220039p* from the Advanced Cyberinfrastructure Coordination Ecosystem: Services & Support (ACCESS) program which is supported by NSF grants #2138259, #2138286, #2138307, #2137603, and #213296.

We thank Mihir Sharma for his work on related research curation and exploration into potential extensions involving terrain height extraction. We thank Mononito Goswami for invaluable discussions on paper organization, framing, experimental design, and project feedback. Additionally, we appreciate David Fan, Simon Stepputtis, and Yaqi Xie for their insightful feedback throughout the project. We are grateful to our reviewers for their constructive feedback.

## References

- [1] Shubhra Aich, Wenshan Wang, Parv Maheshwari, Matthew Sivaprakasam, Samuel Triest, Cherie Ho, Jason M Gregory, John G Rogers III, and Sebastian Scherer. Deep bayesian future fusion for self-supervised, high-resolution, off-road mapping. *arXiv preprint arXiv:2403.11876*, 2024. 2
- [2] Manuel López Antequera, Pau Gargallo, Markus Hofinger, Samuel Rota Bulò, Yubin Kuang, and Peter Kontschieder. Mapillary planet-scale depth dataset. In *Computer Vision – ECCV 2020: 16th European Conference, Glasgow, UK, August 23–28, 2020, Proceedings, Part II*, page 589–604, Berlin, Heidelberg, 2020. Springer-Verlag. ISBN 978-3-030-58535-8. doi: 10.1007/978-3-030-58536-5\_35. URL [https://doi.org/10.1007/978-3-030-58536-5\\_35](https://doi.org/10.1007/978-3-030-58536-5_35). 3
- [3] Maximilian Bernhard, Niklas Strauß, and Matthias Schubert. Mapformer: Boosting change detection by using pre-change information. In *Proceedings of the IEEE/CVF International*

- Conference on Computer Vision (ICCV)*, pages 16837–16846, October 2023. 2
- [4] Holger Caesar, Varun Bankiti, Alex H. Lang, Sourabh Vora, Venice Erin Liong, Qiang Xu, Anush Krishnan, Yu Pan, Giancarlo Baldan, and Oscar Beijbom. nusenes: A multimodal dataset for autonomous driving. In *CVPR*, 2020. 2, 3, 7, 9, 21
  - [5] Ming-Fang Chang, John W Lambert, Patsorn Sangkloy, Jagjeet Singh, Slawomir Bak, Andrew Hartnett, De Wang, Peter Carr, Simon Lucey, Deva Ramanan, and James Hays. Argoverse: 3d tracking and forecasting with rich maps. In *Conference on Computer Vision and Pattern Recognition (CVPR)*, 2019. 2, 3
  - [6] Yongquan Chen, Weiming Fan, Wenli Zheng, Rui Huang, and Jiahui Yu. Predicting bird’s-eye-view semantic representations using correlated context learning. *IEEE Robotics and Automation Letters*, 9(5):4718–4725, 2024. doi: 10.1109/LRA.2024.3384078. 7
  - [7] Mapillary contributors. Mapillary. <https://www.mapillary.com/>, 2013. 3, 4, 16, 19, 21
  - [8] OpenStreetMap contributors. Nominatim. <https://nominatim.openstreetmap.org/ui/search.html>. 4
  - [9] OpenStreetMap contributors. Planet dump retrieved from <https://planet.osm.org>. <https://www.openstreetmap.org>, 2017. 3, 5, 16, 20, 21
  - [10] Timothée Darcet, Maxime Oquab, Julien Mairal, and Piotr Bojanowski. Vision transformers need registers, 2023. 6, 19
  - [11] J. Deng, W. Dong, R. Socher, L.-J. Li, K. Li, and L. Fei-Fei. ImageNet: A Large-Scale Hierarchical Image Database. In *CVPR09*, 2009. 10
  - [12] Georgios Georgakis, Bernadette Bucher, Anton Arapin, Karl Schmeckpeper, Nikolai Matni, and Kostas Daniilidis. Uncertainty-driven planner for exploration and navigation. In *IEEE Conference on Robotics and Automation (ICRA)*, 2022. 2
  - [13] Noel Gorelick, Matt Hancher, Mike Dixon, Simon Ilyushchenko, David Thau, and Rebecca Moore. Google earth engine: Planetary-scale geospatial analysis for everyone. *Remote Sensing of Environment*, 2017. doi: 10.1016/j.rse.2017.06.031. URL <https://doi.org/10.1016/j.rse.2017.06.031>. 5
  - [14] Nikhil Gosala and Abhinav Valada. Bird’s-eye-view panoptic segmentation using monocular frontal view images. *IEEE Robotics and Automation Letters*, 7(2):1968–1975, April 2022. ISSN 2377-3774. doi: 10.1109/lra.2022.3142418. 3
  - [15] Nikhil Gosala, Kürsat Petek, Paulo L. J. Drews-Jr, Wolfram Burgard, and Abhinav Valada. Skyeye: Self-supervised bird’s-eye-view semantic mapping using monocular frontal view images. In *2023 IEEE/CVF Conference on Computer Vision and Pattern Recognition (CVPR)*, pages 14901–14910. IEEE, 2023. doi: 10.1109/CVPR52729.2023.01431. 2, 3, 7, 8, 9, 14, 16, 21
  - [16] Cherie Ho, Seungchan Kim, Brady Moon, Aditya Parandekar, Narek Harutyunyan, Chen Wang, Katia Sycara, Graeme Best, and Sebastian Scherer. Mapex: Indoor structure exploration with probabilistic information gain from global map predictions, 2024. URL <https://arxiv.org/abs/2409.15590>. 2
  - [17] Sixing Hu, Mengdan Feng, Rang Ho Man Nguyen, and Gim Hee Lee. Cvm-net: Cross-view matching network for image-based ground-to-aerial geo-localization. *2018 IEEE/CVF Conference on Computer Vision and Pattern Recognition*, pages 7258–7267, 2018. URL <https://api.semanticscholar.org/CorpusID:52829753>. 3
  - [18] Yihan Hu, Jiazhi Yang, Li Chen, Keyu Li, Chonghao Sima, Xizhou Zhu, Siqi Chai, Senyao Du, Tianwei Lin, Wenhai Wang, Lewei Lu, Xiaosong Jia, Qiang Liu, Jifeng Dai, Yu Qiao, and Hongyang Li. Planning-oriented autonomous driving. In *Proceedings of the IEEE/CVF Conference on Computer Vision and Pattern Recognition*, 2023. 2
  - [19] Ara Jafarzadeh, Manuel López Antequera, Pau Gargallo, Yubin Kuang, Carl Toft, Fredrik Kahl, and Torsten Sattler. Crowddriven: A new challenging dataset for outdoor visual localization. In *Proceedings of the IEEE/CVF International Conference on Computer Vision (ICCV)*, pages 9845–9855, October 2021. 3

- [20] Lihong Jin, Wei Dong, and Michael Kaess. Bevrrender: Vision-based cross-view vehicle registration in off-road gnss-denied environment, 2024. URL <https://arxiv.org/abs/2405.09001>. 2
- [21] Alex H Lang, Sourabh Vora, Holger Caesar, Lubing Zhou, Jiong Yang, and Oscar Beijbom. Pointpillars: Fast encoders for object detection from point clouds. In *Proceedings of the IEEE/CVF conference on computer vision and pattern recognition*, pages 12697–12705, 2019. 3
- [22] Zhiqi Li, Wenhai Wang, Hongyang Li, Enze Xie, Chonghao Sima, Tong Lu, Yu Qiao, and Jifeng Dai. Bevformer: Learning bird’s-eye-view representation from multi-camera images via spatiotemporal transformers. In Shai Avidan, Gabriel Brostow, Moustapha Cissé, Giovanni Maria Farinella, and Tal Hassner, editors, *Computer Vision – ECCV 2022*, pages 1–18, Cham, 2022. Springer Nature Switzerland. ISBN 978-3-031-20077-9. 2
- [23] Yiyi Liao, Jun Xie, and Andreas Geiger. KITTI-360: A novel dataset and benchmarks for urban scene understanding in 2d and 3d. *Pattern Analysis and Machine Intelligence (PAMI)*, 2022. 2, 8, 21
- [24] Zhijian Liu, Haotian Tang, Alexander Amini, Xinyu Yang, Huizi Mao, Daniela L Rus, and Song Han. Bevfusion: Multi-task multi-sensor fusion with unified bird’s-eye view representation. In *2023 IEEE international conference on robotics and automation (ICRA)*, pages 2774–2781. IEEE, 2023. 3
- [25] Chenyang Lu, Marinus Jacobus Gerardus van de Molengraft, and Gijs Dubbelman. Monocular semantic occupancy grid mapping with convolutional variational encoder-decoder networks. *IEEE Robotics and Automation Letters*, 4(2):445–452, April 2018. ISSN 2377-3774. doi: 10.1109/lra.2019.2891028. 3
- [26] Kaustubh Mani, Swapnil Daga, Shubhika Garg, Sai Shankar Narasimhan, Madhava Krishna, and Krishna Murthy Jatavallabhula. Monolayout: Amodal scene layout from a single image. In *Proceedings of the IEEE/CVF Winter Conference on Applications of Computer Vision*, pages 1689–1697, 2020. 2, 3
- [27] Xiangyun Meng, Nathan Hatch, Alexander Lambert, Anqi Li, Nolan Wagener, Matthew Schmittle, JoonHo Lee, Wentao Yuan, Zoey Chen, Samuel Deng, Greg Okopal, Dieter Fox, Byron Boots, and Amirreza Shaban. TerrainNet: Visual Modeling of Complex Terrain for High-speed, Off-road Navigation. In *Robotics: Science and Systems (R:SS)*, 2023. 2
- [28] Maxime Oquab, Timothée Darcet, Théo Moutakanni, Huy V. Vo, Marc Szafraniec, Vasil Khalidov, Pierre Fernandez, Daniel HAZIZA, Francisco Massa, Alaaeldin El-Nouby, Mido Assran, Nicolas Ballas, Wojciech Galuba, Russell Howes, Po-Yao Huang, Shang-Wen Li, Ishan Misra, Michael Rabbat, Vasu Sharma, Gabriel Synnaeve, Hu Xu, Herve Jegou, Julien Mairal, Patrick Labatut, Armand Joulin, and Piotr Bojanowski. DINOv2: Learning robust visual features without supervision. *Transactions on Machine Learning Research*, 2024. ISSN 2835-8856. URL <https://openreview.net/forum?id=a68SUt6zFt>. 6, 19
- [29] Teddy Ort, Krishna Murthy Jatavallabhula, Rohan Banerjee, Sai Krishna Gottipati, Dhaivat Bhatt, Igor Gilitschenski, Liam Paull, and Daniela Rus. Maplite: Autonomous intersection navigation without a detailed prior map. *IEEE Robotics and Automation Letters*, 5:556–563, 2020. URL <https://api.semanticscholar.org/CorpusID:210693362>. 2
- [30] Jonah Philion and Sanja Fidler. Lift, splat, shoot: Encoding images from arbitrary camera rigs by implicitly unprojecting to 3d. In *Computer Vision–ECCV 2020: 16th European Conference, Glasgow, UK, August 23–28, 2020, Proceedings, Part XIV 16*, pages 194–210. Springer, 2020. 3
- [31] Thomas Roddick and Roberto Cipolla. Predicting semantic map representations from images using pyramid occupancy networks. In *IEEE/CVF Conference on Computer Vision and Pattern Recognition (CVPR)*, June 2020. 3, 7
- [32] Avishkar Saha, Oscar Mendez, Chris Russell, and Richard Bowden. Translating images into maps. In *2022 International conference on robotics and automation (ICRA)*, pages 9200–9206. IEEE, 2022. 2, 3, 7, 8, 9, 14, 16

- [33] Paul-Edouard Sarlin, Daniel DeTone, Tsun-Yi Yang, Armen Avetisyan, Julian Straub, Tomasz Malisiewicz, Samuel Rota Buló, Richard Newcombe, Peter Kotschieder, and Vasileios Balntas. OrienterNet: Visual Localization in 2D Public Maps with Neural Matching. In *CVPR*, 2023. 2, 3, 4, 5, 6, 16, 17, 18, 19, 21
- [34] Paul-Edouard Sarlin, Eduard Trulls, Marc Pollefeys, Jan Hosang, and Simon Lynen. Snap: Self-supervised neural maps for visual positioning and semantic understanding. *Advances in Neural Information Processing Systems*, 36, 2024. 3
- [35] Pei Sun, Henrik Kretzschmar, Xerxes Dotiwalla, Aurelien Chouard, Vijaysai Patnaik, Paul Tsui, James Guo, Yin Zhou, Yuning Chai, Benjamin Caine, Vijay Vasudevan, Wei Han, Jiquan Ngiam, Hang Zhao, Aleksei Timofeev, Scott Ettinger, Maxim Krivokon, Amy Gao, Aditya Joshi, Yu Zhang, Jonathon Shlens, Zhifeng Chen, and Dragomir Anguelov. Scalability in perception for autonomous driving: Waymo open dataset. In *Proceedings of the IEEE/CVF Conference on Computer Vision and Pattern Recognition (CVPR)*, June 2020. 2, 3, 6
- [36] Samuel Triest, Mateo Guaman Castro, Parv Maheshwari, Matthew Sivaprakasam, Wenshan Wang, and Sebastian Scherer. Learning risk-aware costmaps via inverse reinforcement learning for off-road navigation. In *2023 IEEE International Conference on Robotics and Automation (ICRA)*, pages 924–930. IEEE, 2023. 2
- [37] Sergey Vartanov. Mapmachine. <https://github.com/enzet/map-machine>, 2022. 5, 21
- [38] Frederik Warburg, Søren Hauberg, Manuel López-Antequera, Pau Gargallo, Yubin Kuang, and Javier Civera. Mapillary street-level sequences: A dataset for lifelong place recognition. In *Computer Vision and Pattern Recognition (CVPR)*, June 2020. 3
- [39] Benjamin Wilson, William Qi, Tanmay Agarwal, John Lambert, Jagjeet Singh, Siddhesh Khandelwal, Bowen Pan, Ratnesh Kumar, Andrew Hartnett, Jhony Kaesemodel Pontes, Deva Ramanan, Peter Carr, and James Hays. Argoverse 2: Next generation datasets for self-driving perception and forecasting. In *Proceedings of the Neural Information Processing Systems Track on Datasets and Benchmarks (NeurIPS Datasets and Benchmarks 2021)*, 2021. 2, 3
- [40] Jimmy Wu, Xingyuan Sun, Andy Zeng, Shuran Song, Johnny Lee, Szymon Rusinkiewicz, and Thomas Funkhouser. Spatial action maps for mobile manipulation. In Marc Toussaint, Antonio Bicchi, and Tucker Hermans, editors, *Robotics, Robotics: Science and Systems*, United States, 2020. MIT Press Journals. ISBN 9780992374761. doi: 10.15607/RSS.2020.XVI.035. Publisher Copyright: © 2020, MIT Press Journals. All rights reserved.; 16th Robotics: Science and Systems, RSS 2020 ; Conference date: 12-07-2020 Through 16-07-2020. 2
- [41] Xindi Wu, KwunFung Lau, Francesco Ferroni, Aljoša Ošep, and Deva Ramanan. Pix2map: Cross-modal retrieval for inferring street maps from images. In *Proceedings of the IEEE/CVF Conference on Computer Vision and Pattern Recognition*, pages 17514–17523, 2023. 3
- [42] Yunpeng Zhang, Zheng Zhu, Wenzhao Zheng, Junjie Huang, Guan Huang, Jie Zhou, and Jiwen Lu. Beverse: Unified perception and prediction in birds-eye-view for vision-centric autonomous driving. *arXiv preprint arXiv:2205.09743*, 2022. 2
- [43] Zhixin Zhang, Yiyuan Zhang, Xiaohan Ding, Fusheng Jin, and Xiangyu Yue. Online vectorized hd map construction using geometry. *arXiv preprint arXiv:2312.03341*, 2023. 3
- [44] Tianhao Zhao, Yongcan Chen, Yu Wu, Tianyang Liu, Bo Du, Peilun Xiao, Shi Qiu, Hongda Yang, Guozhen Li, Yi Yang, and Yutian Lin. Improving bird’s eye view semantic segmentation by task decomposition. *arXiv*, 2024. doi: 10.48550/ARXIV.2404.01925. 7
- [45] Sijie Zhu, Taojiannan Yang, and Chen Chen. Vigor: Cross-view image geo-localization beyond one-to-one retrieval. *2021 IEEE/CVF Conference on Computer Vision and Pattern Recognition (CVPR)*, pages 5316–5325, 2020. URL <https://api.semanticscholar.org/CorpusID:227151840>. 3
- [46] Xiyue Zhu, Vlas Zyrianov, Zhijian Liu, and Shenlong Wang. Mapprior: Bird’s-eye view map layout estimation with generative models. In *Proceedings of the IEEE/CVF International Conference on Computer Vision*, pages 8228–8239, 2023. 3

## Checklist

1. For all authors...
  - (a) Do the main claims made in the abstract and introduction accurately reflect the paper's contributions and scope? [Yes] Contribution 1 (MIA data engine) is described in Section 3 and the code is provided in supplemental material. Contribution 2 (Sampled dataset) is described in Section 4. Contribution 3 (Zero-shot performance) is substantiated in the experiments in Section 6. Contribution 4 (Show further opportunities in generalizable): We show significant research remains in the result section (Section 6) in 2 ways, (1) difference between zero-shot and fully supervised performance, (2) highlight that map prediction is still difficult for all models (including ours) when testing in more extreme out-of-distribution settings.
  - (b) Did you describe the limitations of your work? [Yes] See Subsection 7.1.
  - (c) Did you discuss any potential negative societal impacts of your work? [Yes] See Subsection 7.1.
  - (d) Have you read the ethics review guidelines and ensured that your paper conforms to them? [Yes] We further expand on data-related guidelines in the later items in checklist.
2. If you are including theoretical results...
  - (a) Did you state the full set of assumptions of all theoretical results? [N/A]
  - (b) Did you include complete proofs of all theoretical results? [N/A]
3. If you ran experiments (e.g. for benchmarks)...
  - (a) Did you include the code, data, and instructions needed to reproduce the main experimental results (either in the supplemental material or as a URL)? [Yes] Code, data and instructions will be available in supplemental materials.
  - (b) Did you specify all the training details (e.g., data splits, hyperparameters, how they were chosen)? [Yes] We specify training details in Section 5, Appendix and Supplementary Materials.
  - (c) Did you report error bars (e.g., with respect to the random seed after running experiments multiple times)? [No] Following prior published BEV map prediction work [15, 32] in which no error bars are presented, we use a consistent random seed across all experiments.
  - (d) Did you include the total amount of compute and the type of resources used (e.g., type of GPUs, internal cluster, or cloud provider)? [Yes] We included details in Section 4 and Supplemental Material.
4. If you are using existing assets (e.g., code, data, models) or curating/releasing new assets...
  - (a) If your work uses existing assets, did you cite the creators? [Yes] We provide citations to Mapillary, OpenStreetMap, Map Machine, OrienterNet in Section 3. We provide citations for used datasets, NuScenes and KITTI360-BEV in Section 6.
  - (b) Did you mention the license of the assets? [Yes] We mention license assets to Mapillary, OpenStreetMap, Map Machine, OrienterNet in Section 3 and we also include a complete table of all projects / datasets used through any part of the project in Table 11 in Appendix
  - (c) Did you include any new assets either in the supplemental material or as a URL? [Yes] We open-source our data curation pipeline and curated dataset(MIA dataset) in Supplemental Material
  - (d) Did you discuss whether and how consent was obtained from people whose data you're using/curating? [Yes] Information on user consent is provided in Appendix.
  - (e) Did you discuss whether the data you are using/curating contains personally identifiable information or offensive content? [Yes] Information on data privacy is provided in Appendix.
5. If you used crowdsourcing or conducted research with human subjects...
  - (a) Did you include the full text of instructions given to participants and screenshots, if applicable? [N/A]



- (b) Did you describe any potential participant risks, with links to Institutional Review Board (IRB) approvals, if applicable? [N/A]
- (c) Did you include the estimated hourly wage paid to participants and the total amount spent on participant compensation? [N/A]

## A Appendix

### A.1 Filtering Pipeline Yields

Table 4 shows the yield of data samples from the different stages of the MIA curation pipeline. Table 5 presents a statistics breakdown on the locations.

Table 4: The FPV Filtering pipeline stage for the MIA dataset, covering 6 cities, starts by filtering images based on city boundaries and recency (images after 2017). It then selects 17 camera models and filters images based on location and angle discrepancies between the SfM rectified pose and recorded pose (keeping those with less than 20° and 3m discrepancies). Finally, a spatial sparsity filter removes images within a 4m radius in a sequence.

Curation Stage	Boundaries	Recency	Camera Model	Angle Discrip	Loc Discrip	Spatial
# Images	15.93M	12.21M	3.049M	2.606M	1.353M	<b>1.204M</b>
% Images	100.00%	76.67%	19.15%	16.36%	8.50%	<b>7.56%</b>

Table 5: FPV numbers for the MIA Dataset as the curated data moves from the beginning of the pipeline (top of table) down to the end. PT: Pittsburgh, NY: New York, CG: Chicago, LA: Los Angeles, SF: San Francisco, HS: Houston.

Stage	PT	NY	CG	LA	SF	HS	ALL
Boundaries	914.1K	3.161M	1.422M	4.150M	2.825M	3451961	15.93M
Recency	867.0K	2.999M	1.281M	4.055M	2.100M	908.5K	12.21M
Camera Model	31.0K	270.5K	478.5K	1.917M	294.9K	57.3K	3.049M
Angle Discrip	25.7K	177.6K	433.6K	1.758M	156.9K	54.0K	2.606M
Loc Discrip	18.0K	89.8K	196.6K	958.6K	59.2K	31.1K	1.353M
Spatial	15.9K	79.2K	162.4K	879.4K	37.7K	29.4K	<b>1.204M</b>

### A.2 Dataset Split Visualization

MIA dataset is split into train, validation, and test partitions based on the location. We ensure that the samples in the three partitions are geographically non-overlapping, as shown in Fig. 10.

### A.3 Intra-Dataset Class Mappings

As different dataset captures different map elements, we map the classes from NuScenes and KITTI360-BEV carefully to MIA, as shown in Table 6.

Table 6: Intra-Dataset Class Mapping for Zero-Shot Experiments

Mapper	NuScenes [32]	KITTI360-BEV [15]
Road	Drivable	Road
Crossing	Crossing	N/A
Sidewalks	Walkway	Sidewalk
Building	N/A	Building
Parking	Carpark	N/A
Terrain	N/A	Terrain

### A.4 Additional Comparisons between MapItAnywhere and OrienterNet [33]

MIA builds on OrienterNet [33] which uses Mapillary [7] and OpenStreetMap [9], to perform RGB image localization within a pre-existing map. Our work extends OrienterNet [33] by using the same data sources to achieve the goal of generalizable FPV-to-BEV *map prediction*. Our work differs in 2 ways: (1) dataset processing pipeline and (2) released datasets. First, OrienterNet has a fixed set

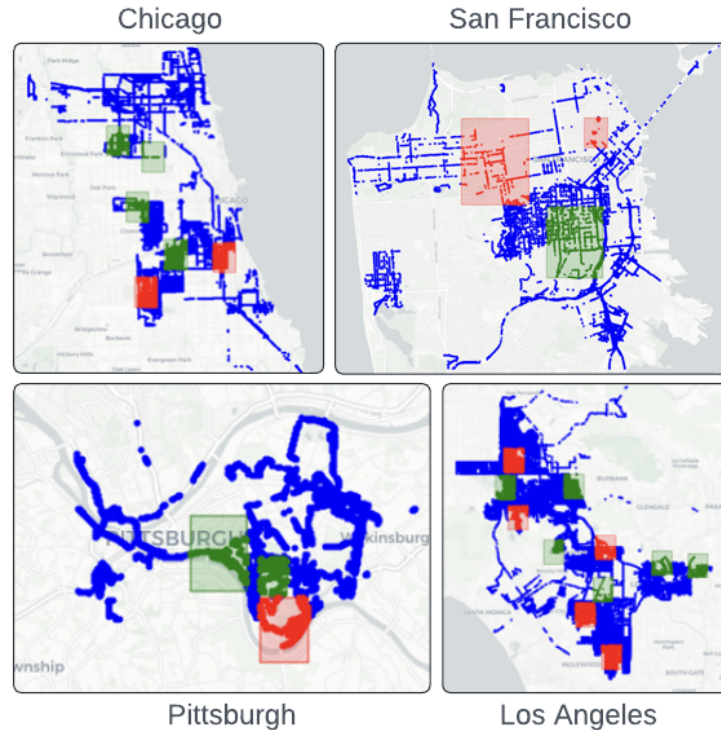


Figure 10: MIA **Dataset split visualization**. Blue for training, green for validation, and red for testing. We ensure that the splits are geographically non-overlapping for a more robust evaluation.

of image IDs that was curated either manually or through a closed-source method. In contrast, we developed a filtering pipeline that allows the automatic curation and collection of images from any location in the world. Users can define a city and change filtering thresholds to meet their needs. Secondly, while OrienterNet-rendered maps provide useful context to an image encoder, they are unsuitable as a prediction target for BEV prediction. This is because the map elements are not consistent with the real world / FPV image. E.g., roads in OrienterNet are 1 pixel wide, whereas the road in ours is a rasterized shape aligned with satellite and FPV images. We illustrate the differences in Figures 11 and 12.

### A.5 Additional MIA data samples

Additional data samples from MIA dataset and associated Mapillary metadata are shown in Figure 13.

### A.6 Mapper Model Architecture

We design a simple model architecture Mapper that can leverage the diverse characteristics of the MIA dataset. As discussed in the main paper, our model builds on OrienterNet [33] as the front-end architecture. This choice is made because OrienterNet accommodates different camera characteristics (e.g. focal lengths and image size) and poses information, thereby leveraging the full information available from Mapillary.

To incorporate pose information, we adopt OrienterNet’s approach of gravity-aligning the image, ensuring that each column aligns with a gravity-aligned vertical plane in 3D [33]. Gravity alignment is essential for matching with OpenStreetMap data, as many Mapillary images are captured from vehicles on slopes, or from bicycles and hand-held cameras with varying tilt. After gravity alignment, the image is resized and padded to 512 x 512 pixels.

The processed, gravity-aligned image is then passed through an image encoder to obtain first-person view (FPV) features. Unlike OrienterNet [33], we replace its ResNet encoder with a DINOv2 ViT-

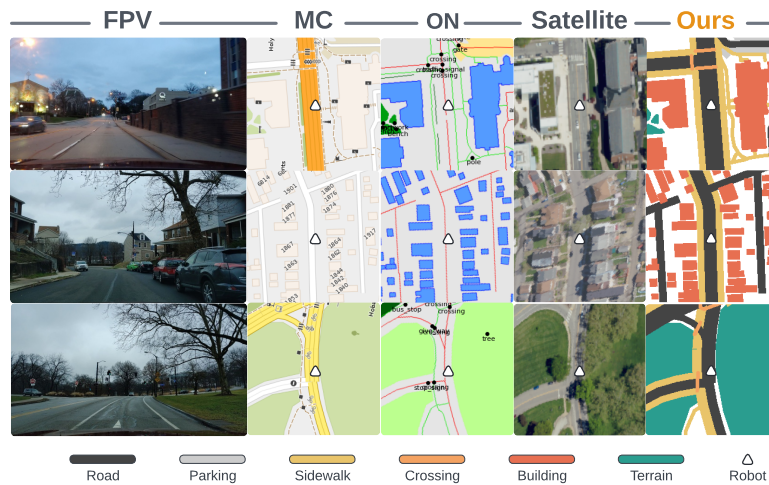


Figure 11: Qualitative comparisons between different rendering/rasterizing pipelines. ON: OrienterNet[33]. MIA's rendering pipeline produces semantic map suitable for map prediction.



Figure 12: Detailed comparison of BEV rendering/rasterizing pipelines between OrienterNet[33] (left) and Ours (Right). Our road widths are more satellite aligned than OrienterNet's roads which are single pixel lines. Our crossings are drawn out from sidewalk to sidewalk whereas OrienterNet crossings are single pixel nodes. We are able to infer sidewalks based on road type in accordance with the OSM standards whereas OrienterNet does not.



Figure 13: Additional MIA data samples and associated metadata

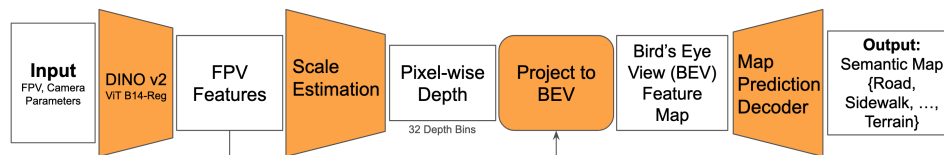


Figure 14: Mapper Architecture

B/14 [28] with registers [10] as the image encoder for improved generalizability. The FPV features are then fed into a linear layer to estimate pixel-wise scores for one of 32 *scale* (depth normalized by focal length) bins. These scale scores are then mapped to metric depth scores based on the focal length. The depth scores are used to project FPV features to generate a bird's eye view feature map through polar and Cartesian projections. To adapt OrienterNet [33] to the map prediction task, we add a decoder head to the BEV features to predict the semantic map.

## A.7 Hyperparameters

We release our pipeline hyperparameters in this section. We use Table 7 in our data engine; Table 8 for pretraining Mapper using MIA dataset; and Table 9, Table 10 for NuScenes and KITTI-360 fine-tuning.

## A.8 Dataset Privacy and Consent

Our First-Person-View data source, Mapillary [7], employs measures to ensure privacy by blurring faces and license plates, thereby removing personally identifiable information. Detailed information on their privacy policy is available [here](#). When users contribute images to Mapillary, these images are shared under the CC-BY-SA license. Further details on this licensing can be found [here](#).



Table 7: Data Curation Hyperparameters

Parameter	Value
$\alpha$	224
$\delta$	50
$\rho$	0.5
Recency Filter	> 2017
Location Discrepancy	3m
Angle Discrepancy	20°
Sparsity Filter	4m
Camera Models	"hdr-as200v", "iphone11pro", "iphone11", "iphone12", "gopromax", "iphone12pro", "lm-v405", "iphone11promax", "hdr-as300", "iphone13", "fdr-x1000v", "sm-g970u", "sm-g930v", "iphone13promax", "iphone13pro", "iphone12promax", "fdr-x3000"

Table 8: Pretraining Hyperparameters

Data		Model	
Parameter	Value	Parameter	Value
Resize Image	512	Backbone Model	DINOv2 ViT-B/14 w/ registers
Batch Size	128	Latent Dimension	128
Gravity Alignment	Yes	Dropout Rate	0.2
Pad To Square	Yes	Learning Rate	1.00E-03
Rectify Pitch	Yes	LR Scheduler	Cosine Annealing LR
Scenes	Chicago, New York, Los Angeles, San Francisco	Losses	Dice Loss + Binary Cross Entropy Loss
Augmentations	Brightness, Contrast, Saturation, Random Flip, Hue	Loss Mask	Frustum
		Class Weights	[1.00351229, 4.34782609, 1.00110121, 1.03124678, 6.69792364, 7.55857899]

Table 9: Finetuning (NuScenes) Hyperparameters

Data		Model	
Parameter	Value	Parameter	Value
Resize Image	512	Backbone Model	DINOv2 ViT-B/14 w/ registers
Batch Size	128	Latent Dimension	128
Gravity Alignment	Yes	Dropout Rate	0
Pad To Square	Yes	Learning Rate	1.00E-04
Rectify Pitch	Yes	LR Scheduler	Cosine Annealing LR
Scenes	All (Only Front Camera)	Losses	Dice Loss + Binary Cross Entropy Loss
Augmentations	Brightness, Contrast, Saturation, Random Flip, Hue	Loss Mask	Frustum
		Class Weights	[1.00060036, 1.85908161, 1.0249052, 2.57267816]

Our Bird's Eye Map (BEV) data source, OpenStreetMap [9] provides guidance to limit mapping private information. Details can be found [here](#).

More licensing information can be found in Table 11.

Table 10: Finetuning (KITTI360-BEV) Hyperparameters

Data		Model	
Parameter	Value	Parameter	Value
Target Focal Length	256	Backbone Model	DINOv2 ViT-B/14 w/ registers
Batch Size	32	Latent Dimension	128
Gravity Alignment	No	Dropout Rate	0.1
Pad To Square	Yes	Learning Rate	1.00E-04
Rectify Pitch	Yes	LR Scheduler	Cosine Annealing LR
Scenes	All (Only Front Camera)	Losses	Dice Loss + Binary Cross Entropy Loss
Augmentations	Brightness, Contrast, Saturation, Random Flip, Hue	Loss Mask	Frustum + Visibility
		Class Weights	[2.5539, 3.8968, 1.9405, 5.6612]

Table 11: Licenses for all projects and datasets used throughout this work. "\*" denotes works used for the development of MIA. "†" denotes works used for evaluation purposes only.

Projects	License
Mapillary* [7]	CC BY-SA 4.0
Open Street Map* [9]	ODbL
MapMachine* [37]	MIT License
Nuscenes† [4]	CC BY-NC-SA 4.0
KITTI-360† [23]	CC BY-NC-SA 3.0
KITTI-360-BEV† [15]	Non Commercial Use Only
OrienterNet* [33]	CC-BY-SA 4.0