
OneBit: Towards Extremely Low-bit Large Language Models

Yuzhuang Xu¹ Xu Han² Zonghan Yang² Shuo Wang²
Qingfu Zhu¹ Zhiyuan Liu² Weidong Liu² Wanxiang Che^{1,✉}

¹Research Center for Social Computing and Information Retrieval,
Harbin Institute of Technology, Harbin, China

²Department of Computer Science & Technology, Tsinghua University, Beijing, China
xyz21thu@gmail.com, car@ir.hit.edu.cn

Abstract

Model quantification uses low bit-width values to represent the weight matrices of existing models to be quantized, which is a promising approach to reduce both storage and computational overheads of deploying highly anticipated LLMs. However, current quantization methods suffer severe performance degradation when the bit-width is extremely reduced, and thus focus on utilizing 4-bit or 8-bit values to quantize models. This paper boldly quantizes the weight matrices of LLMs to 1-bit, paving the way for the extremely low bit-width deployment of LLMs. For this target, we introduce a 1-bit model compressing framework named OneBit, including a novel 1-bit parameter representation method to better quantize LLMs as well as an effective parameter initialization method based on matrix decomposition to improve the convergence speed of the quantization framework. Sufficient experimental results indicate that OneBit achieves good performance (at least 81% of the non-quantized performance on LLaMA models) with robust training processes when only using 1-bit weight matrices. Code and checkpoints are available at <https://github.com/xuyuzhuang11/OneBit>

1 Introduction

Transformer [36] has emerged as the pivotal architecture in large language models (LLMs), fundamentally reshaping the approach to natural language processing in deep learning era [6, 34, 4]. Despite their popularity, deploying transformer-based LLMs presents significant challenges due to their computational intensity and considerable memory requirements as the parameters of LLMs become more and more. For instance, even moderately-sized LLMs like LLaMA-13B [34] require around 26GB of memory to load its all parameters in FP16 format. Such overheads make deploying LLMs difficult beyond mid-to-high-end GPUs like the A100, let alone on mobile devices. The high demand for resources not only drives up usage costs, but also restricts their wider application.

Numerous efforts [10, 14, 13] have been devoted to reducing the computational and memory overheads of LLMs, while still preserving most of their original model capabilities. Among these efforts, quantization has gained widespread attention, particularly Post-Training Quantization (PTQ), benefited from its lower transferring costs. Seminal studies such as GPTQ [14], SpQR [12], and AWQ [20] successfully compress the weight matrices of LLMs to 4-bit values while maintaining the main abilities of LLMs. Efficient quantization represents significant advances in LLM optimization, by achieving a balance between time and space efficiency as well as model performance.

Unfortunately, the efficacy of PTQ rapidly diminishes when the quantization bit-width is extremely low, as shown in Figure 1. Existing PTQ methods managed to compress weight matrices down to at least 3-bit [9]. Recent researches hope to leverage Quantization-Aware Training (QAT) to

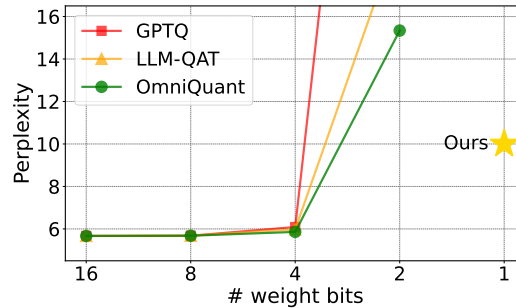


Figure 1: The perplexity (lower scores mean better performance) of existing widely-used low-bit quantization methods on LLaMA-7B, reported on Wikitext2 [23]. All the examined previous approaches suffer from significant performance degradation when quantizing models to 2-bit values. Our 1-bit quantization method can outperform these 2-bit baselines.

overcome the bottlenecks faced by PTQ. LLM-QAT [21] introduces a few learnable parameters into the quantization process, achieving notable results. OmniQuant [30], integrating learnable equivalent transformation, presents promising results in 2-bit quantization. However, existing methods decline when compressing model weights to 1 bit, struggling to maintain effectiveness. This mainly stems from the drastic precision loss at extremely low bit-width representation in weight matrix \mathbf{W} , significantly increasing loss in linear projection $\mathbf{W}\mathbf{X}$, which is the core operator within LLMs.

In this paper, we propose a novel Linear layer and Sign-Value-Independent Decomposition (SVID) for weight matrices to represent LLMs using approximately 1-bit values. In our novel layer architecture, each original high-bit weight matrix is represented as one sign matrix (± 1) and two value vectors. The value vectors provide necessary floating-point precision in linear projection at little cost and help the model to be trained easily. The sign matrix maintains the high rank of the original weight matrix with a small space cost, thereby preserving high information capacity. SVID offers a better parameter initialization for 1-bit models from the non-quantized model and we employ quantization-aware knowledge distillation to transfer the capabilities of the original model to the proposed 1-bit counterpart. Experiments demonstrate that our method performs well at the W1A16 (1-bit weight and 16-bit activation) quantization level. Furthermore, our 1-bit model is more amenable to training and knowledge transfer than previous works. In summary, our contributions are 3-fold:

- We propose a novel and efficient 1-bit model architecture for LLMs, which can improve both the time and space efficiency during model inference. Moreover, our architecture is more stable during quantizing LLMs.
- We propose SVID to decompose high-bit matrices into low-bit ones, which is essential for the initialization of our 1-bit architecture. Experiments demonstrate that the SVID-based initialization can improve the model performance and convergence speed.
- Extensive experiments demonstrate that our method works well in model sizes from 1.3B to 13B in OPT, LLaMA, and LLaMA2, showcasing its generalizability.

2 Related Work

2.1 Large Language Model Compression

Quantization, pruning, and knowledge distillation (KD) are the mainstream methods for model compression. Quantization compresses model weights into low-bit values [14, 20, 11]. For data type alignment in computation and reducing memory, it also involves quantizing activation [10, 39] and key-value cache [30]. Pruning simplifies model complexity by removing unimportant weights or modules, thereby sparsifying the original larger models [13, 31, 22]. KD trains a smaller student model under the guidance of a larger teacher model [16, 1], achieving the purpose of compressing the larger one. Beyond these methods, low-rank factorization approximates the original weight matrix \mathbf{W} with the product of two lower-rank matrices [40] and also achieves promising results. Our work belongs to quantization, using KD for knowledge transfer from the original LLM and uniquely

focusing on extremely low bit-width quantization. More details about model compression can refer to existing surveys [37, 43].

2.2 Large Language Model Quantization

Since this paper aims to obtain extremely low-bit LLMs, here we thus introduce more details about LLM quantization. Quantization stands as a popular and crucial method for model compression, capable of achieving a significant compression ratio with a relatively small loss. It can be classified into Post-Training Quantization (PTQ) and Quantization-Aware Training (QAT) according to when quantization is applied.

PTQ directly converts trained models into lower-bit counterparts using accurate solvers and limited calibration data without additional training. Typically, GPTQ [14] row-wisely quantizes weight matrices and adjusts remaining weights to compensate for the precision loss caused by quantization, achieving nearly lossless 4-bit weight quantization. Moreover, numerous studies observed the effect of “outliers” in quantization [10, 18, 20]. LLM.int8() [10] suggests mixed-precision decomposition to ensure the accuracy of a few outliers in activations. SmoothQuant [39] reduces the difficulty of quantization by smoothing the outliers of activation. SpQR [12] identifies sensitive weights to ensure their precision, while quantizing other weights to lower bit-width.

QAT integrates quantization steps within the model, applying them during training or fine-tuning. It allows the model to better adapt to the reduced precision induced by quantization, leading to improved performance compared to PTQ. LLM-QAT [21] introduces a small number of learnable parameters into quantization and employs KD using data generated by the original model itself. OmniQuant (30; we classify it as QAT) further introduces learnable equivalent transformation, achieving acceptable results in 2-bit weight quantization. Contemporary work QuIP# [35] combines randomized Hadamard transform, vector quantization techniques, and fine-tuning to achieve better performance in 2-bit level. PEQA [17] and QLoRA [11] focus on fine-tuning a limited number of extra parameters to mitigate the precision loss caused by sub-4bit weight quantization. Our work is closely related to QAT, but due to the unique challenges posed by 1-bit quantization, our representation and initialization methods of quantized weights are distinct from any existing work.

3 Methodology

This section demonstrates our 1-bit architecture of the `Linear` layer to be quantized and discuss how to initialize the quantized model to achieve better performance in knowledge distillation. We start with a short review of classical weight quantization methods in Section 3.1 and then formulate our OneBit from Section 3.2 to Section 3.4 in detail.

3.1 Background

The main idea of model quantization is to compress each weight matrix \mathbf{W} within models in FP32 or FP16 format to a low-bit counterpart. Specifically, we often quantize the weight matrices of `Linear` layers in transformer to 8, 4, and even 2 bits.

The majority of quantization studies primarily employ the round-to-nearest (RTN) method, by which the weight w is rounded to the nearest value in the quantization grid. It can be formulated as

$$\hat{w} = \text{Clip} \left(\left\lfloor \frac{w}{s} \right\rfloor + z, 0, 2^N - 1 \right), \quad (1)$$

where s denotes the quantization scale parameter, z denotes the zero point parameter, and N is the quantization bit-width. $\text{Clip}(\cdot)$ truncates the result in the range of 0 to $2^N - 1$. With the bit-width being lower and lower, the quantization grid also becomes sparser. When we quantize a LLM to 1-bit values, there are only 2 available numbers to be chosen in the quantized model. Existing study [9] points out that quantization based on the RTN method may get their best performance at the 4-bit level. Further quantizing to 2-bit values following this paradigm would result in a substantial degradation [30] as shown in Figure 1.

Furthermore, when N equals 1, quantization based on RTN method is essentially equivalent to setting a threshold, with weight w on either side of it being converted to corresponding integer value \hat{w} . In such a scenario, the parameters s and z in Eq. (1) effectively lose their practical

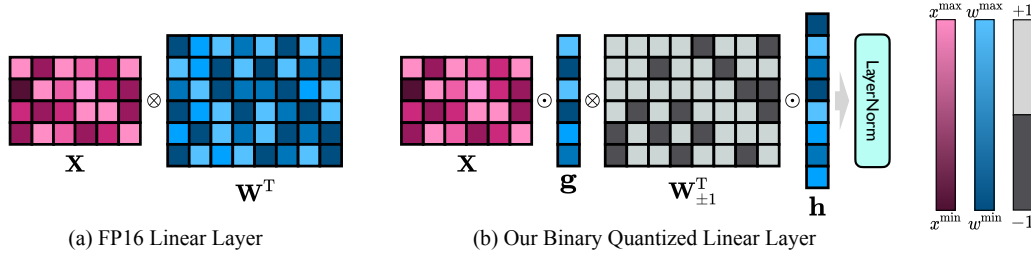


Figure 2: The main idea of our method OneBit. The left is the original FP16 Linear Layer, in which both the activation \mathbf{X} and the weight matrix \mathbf{W} are in FP16 format. The right is our proposed architecture. Only value vectors \mathbf{g} and \mathbf{h} are in FP16 format, and the weight matrix consists of ± 1 instead, which can be represented in INT1.

significance. Consequently, when quantizing weights to 1 bit, the element-wise RTN operation drastically undermines the precision of the weight matrix \mathbf{W} , leading to poor performance of the quantized model.

3.2 1-bit Linear Layer Architecture

Due to the severe precision loss of 1-bit weight quantization, converting weight matrices in Linear layers directly from FP32/16 to 1-bit format based on RTN is challenging. Wang et al. [38] explore this possibility by studying the capabilities of purely 1-bit weight matrices, training the 1-bit model *from scratch*. In the W1A16 setting, their Linear layers are designed as

$$\begin{aligned}\mathbf{W}_{\pm 1} &= \text{Sign}[\mathbf{W} - \text{Mean}(\mathbf{W})], \\ \eta &= \text{Mean}[\text{Abs}(\mathbf{W} - \text{Mean}(\mathbf{W}))], \\ \mathbf{Y} &= \eta \cdot \text{LayerNorm}(\mathbf{X})\mathbf{W}_{\pm 1}^T,\end{aligned}\quad (2)$$

where \mathbf{W} denotes the quantized weight matrix with the shape $m \times n$ and $\mathbf{W}_{\pm 1}$ denotes the 1-bit quantized matrix. \mathbf{X} is the input of Linear layer and \mathbf{Y} is the output. $\text{Sign}(\cdot)$, $\text{Mean}(\cdot)$ and $\text{Abs}(\cdot)$ functions return the sign matrix, average and absolute value matrix. Unfortunately, this approach reduces computational demands but also leads to a marked decrease in performance [38]. Moreover, due to training difficulties, experiments show that this method is challenging to use for quantizing existing models and can only be applied to training models *from scratch*.

Inspired by Wang et al. [38], we also quantize the weight matrix using the function $\text{Sign}(\cdot)$, and the element of the quantized matrix is set to +1 or -1 as well. Moreover, we also notice that although $\mathbf{W}_{\pm 1}$ maintains a high rank of \mathbf{W} , the missed floating-point precision still destroys the model performance. Therefore, different from previous work, we introduce 2 value vectors with an FP16 format to compromise the precision loss in the quantization process. During training, our proposed Linear layers are designed as

$$\begin{aligned}\mathbf{W}_{\pm 1} &= \text{Sign}(\mathbf{W}), \\ \mathbf{Y} &= [(\mathbf{X} \odot \mathbf{g})\mathbf{W}_{\pm 1}^T] \odot \mathbf{h}, \\ \mathbf{Z} &= \text{LayerNorm}(\mathbf{Y}),\end{aligned}\quad (3)$$

where \mathbf{g} and \mathbf{h} are the two FP16 value vectors. During inference, $\mathbf{W}_{\pm 1}$ is packed with an INT1 format, and $\text{Sign}(\cdot)$ will not be used, as shown in Figure 2. Note that we specify the calculation order using brackets in Eq. (3) for minimizing the time and space cost. The main difference between Wang et al. [38] and OneBit is the extra parameter \mathbf{g} and \mathbf{h} . Even if additional parameters are brought in, the benefits far outweigh its small cost. For instance, when we quantize one weight matrix with the shape 4096×4096 , the average bit-width of the quantized result is 1.0073. See A.7 for the details.

3.3 Sign-Value-Independent Decomposition

In our proposed 1-bit architecture, the weight matrix \mathbf{W} is mathematically divided into two components: one sign matrix $\mathbf{W}_{\pm 1}$ in INT1 format and two value vector \mathbf{g}/\mathbf{h} in FP16 format. To initialize

the 1-bit model with the help of the fully trained weight, we introduce the Sign-Value-Independent Decomposition (SVID) of the weight matrix \mathbf{W} , which can be formulated as $\mathbf{W} = \mathbf{W}_{\text{sign}} \odot \mathbf{W}_{\text{value}}$. Here we have $\mathbf{W}_{\text{value}} = |\mathbf{W}|$ and $\mathbf{W}_{\text{sign}} = \text{Sign}(\mathbf{W})$. For $\mathbf{W}_{\text{value}}$, we further approximately decompose it into the outer product of two vectors \mathbf{a} and \mathbf{b} , which is also known as *rank-1 approximation*. Hence, our proposed matrix decomposition method can be represented as

$$\mathbf{W} \approx \mathbf{W}_{\text{sign}} \odot (\mathbf{a}\mathbf{b}^T). \quad (4)$$

We can employ some widely used matrix decomposition methods to perform the rank-1 approximation, such as SVD [2] and NMF [25].

Proposition 1 Given the weight matrix \mathbf{W} and input \mathbf{X} , the Linear layer can be reformulated as the following according to SVID:

$$\mathbf{X}\mathbf{W}^T \approx [(\mathbf{X} \odot \mathbf{b}^T) \mathbf{W}_{\text{sign}}^T] \odot \mathbf{a}^T. \quad (5)$$

We prove this approximation in Appendix A.1. This bridges the gap between the architecture of the quantized model and its original weights. It indicates that if we assign \mathbf{W}_{sign} to $\mathbf{W}_{\pm 1}$, \mathbf{a}^T to \mathbf{h} and \mathbf{b}^T to \mathbf{g} , the quantized model is an approximate initialization of the original model. Moreover, compared to restoring the original matrix \mathbf{W} first (such as in Eq. (4)), the computational order in Eq. (5) saves approximately one matrix \mathbf{W} in FP16 format in memory as there is no need to restore \mathbf{W} in FP16 format.

The main objective of SVID is to involve the sign matrix \mathbf{W}_{sign} in approximating matrix \mathbf{W} , rather than solely relying on value vectors in FP16 format. To substantiate the role of the sign matrix \mathbf{W}_{sign} in matrix approximation, we present the following proposition.

Proposition 2 Given matrices \mathbf{W} and $|\mathbf{W}|$, $\mathbf{W} = \mathbf{W}_{\text{sign}} \odot |\mathbf{W}|$. We decompose these matrices in the way $\mathbf{W} = \mathbf{a}\mathbf{b}^T + \mathbf{E}_1$ and $|\mathbf{W}| = \tilde{\mathbf{a}}\tilde{\mathbf{b}}^T + \mathbf{E}_2$, where \mathbf{E}_i denotes the error matrices. In terms of the Frobenius-norm, the SVID is closer to the original matrix \mathbf{W} :

$$\left\| \mathbf{W} - \mathbf{W}_{\text{sign}} \odot \tilde{\mathbf{a}}\tilde{\mathbf{b}}^T \right\|_F^2 \leq \left\| \mathbf{W} - \mathbf{a}\mathbf{b}^T \right\|_F^2. \quad (6)$$

We also prove this proposition in Appendix A.1. It clearly demonstrates the practical role of the sign matrix \mathbf{W}_{sign} in matrix approximation.

Note that, given the predominantly low precision of most parameters, it is quite challenging to approximate the weight matrix \mathbf{W} accurately. SVID is not aimed to precisely replicate the original model's parameters, but to provide an effective starting point for further training, leveraging the extensive training of the original model. Details on transferring knowledge from the original model to the quantized counterpart are in Section 3.4.

3.4 Knowledge Transfer

We employ quantization-aware knowledge distillation to transfer knowledge from the original model (i.e. teacher model) to the quantized one (i.e. student model). In the student model, the element in matrix \mathbf{W} and vectors \mathbf{g}/\mathbf{h} in Eq. (3) will be trained. We use cross-entropy based logits and mean-square-error based hidden state of the full-precision teacher model to direct the quantized student model [32]. Language modeling loss is not used. The cross-entropy is defined as

$$\mathcal{L}_{\text{CE}} = -\frac{1}{n_s} \sum_{i=1}^{n_s} \sum_c P_c^{\mathcal{T}}(\mathbf{o}_i) \log P_c^{\mathcal{S}}(\mathbf{o}_i), \quad (7)$$

where c denotes the number of classes and n_s denotes the number of training samples in the current batch. \mathcal{T} and \mathcal{S} are the teacher model and student model, respectively. The error of hidden states is defined as

$$\mathcal{L}_{\text{MSE}} = \sum_{i=1}^{n_s} \sum_{j=1}^{n_l} \left\| \frac{\mathbf{q}_{i,j}^{\mathcal{T}}}{\|\mathbf{q}_{i,j}^{\mathcal{T}}\|_2} - \frac{\mathbf{q}_{i,j}^{\mathcal{S}}}{\|\mathbf{q}_{i,j}^{\mathcal{S}}\|_2} \right\|_2^2, \quad (8)$$

where n_l denotes the number of layers and \mathbf{q} denotes the hidden state. Hence the final objective function can be formulated as

$$\mathcal{L}_{\text{KD}} = \mathcal{L}_{\text{CE}} + \alpha \mathcal{L}_{\text{MSE}}, \quad (9)$$

where α is the hyper-parameter that balances the importance of the cross-entropy loss and the features in the intermediate layers. Please refer to A.6 for further discussions of this part.

4 Experiments

We experiment with 1-bit weight-only quantization and maintain 16-bit activation (W1A16) in this work. We evaluate our approach by performing experiments on OPT-1.3B/2.7B models, LLaMA-7B/13B models and LLaMA2-7B/13B models, and present results on various tasks.

4.1 Settings

Data For the training data of our quantization-aware knowledge distillation, we follow Liu et al. [21] to synthesize corpus using next token generation from the original teacher model. It randomizes the first token from vocabulary and generates the next token iteratively until reaching either the $\langle \text{EOS} \rangle$ token or the maximum length. Specially, the top-1 predictions are selected deterministically for the first 3 to 5 tokens, followed by stochastic sampling for the remaining tokens. We utilized LLaMA-7B to generate a total of 132k data entries, each with a maximum length of 2,048.

Training Details Every KD experiment learns the training data over 50 epochs, from which 2048-token segments are selected. We employ NMF in scikit-learn¹ to decompose the weight matrices in SVD. The quantized student models are optimized by Adam [19] with $\beta_1 = 0.9$, $\beta_2 = 0.98$. The learning rate for all experiments is scheduled by *cosine* strategy. We use NVIDIA A100 GPUs and maintain FP16 precision while training quantized models. For additional details such as learning rate, please refer to Table 1.

Table 1: Training details of knowledge distillation.

Models	learning rate	α	# GPUs
OPT-1.3B	4e-4	1.0	1 × 8
OPT-2.7B	2e-4	1.0	1 × 8
LLaMA-7B	4e-4	1.0	1 × 8
LLaMA-13B	2e-4	1.0	2 × 8
LLaMA2-7B	1e-4	1.0	1 × 8
LLaMA2-13B	2e-4	1.0	2 × 8

Baselines To our knowledge, there is no previous work exploring the 1-bit quantization of LLMs from a knowledge transfer perspective. To this end, we relax the quantization bit-width of baselines to 2 bits (W2A16) while maintaining the W1A16 setting in our method. We compare our method with GPTQ [14], LLM-QAT [21] and OmniQuant [30]. To ensure a fair comparison in terms of space usage, baselines do not employ grouped quantization. Additionally, we included the results of vanilla transformers with FP16 precision as a reference. While the recent work BitNet [38] also introduced one 1-bit model architecture, it only worked for training models from scratch. We also analyze its capability to transfer knowledge from the original models in Appendix A.5.

Evaluation Metrics Basically, we evaluate quantized models by testing the perplexity on the validation set, specifically on WikiText2 [23] and C4 [28]. Lower perplexity indicates that the compressed model is better at preserving the output distribution of the original model. Furthermore, accuracies of zero-shot tasks including Winogrande [29], HellaSwag [41], PIQA [4], BoolQ [7], and ARC [8] are also reported. They evaluate if the capabilities of the original model on downstream tasks are retained. We utilize the open-sourced toolkit “LM-Evaluation-Harness”² to perform the perplexity test and all zero-shot tasks.

¹<https://scikit-learn.org/>

²<https://github.com/EleutherAI/lm-evaluation-harness>

Table 2: Main results of evaluation experiment. We report the perplexity and zero-shot accuracy. “FP16” is the transformer with FP16 parameters and we refer to it as the upper-bound of all the methods. The **best** score is bolded.

Models	Methods	Perplexity(↓)				Zero-shot Accuracy(↑)				
		Wiki2	C4	Wino.	Hella.	PIQA	BoolQ	ARC-e	ARC-c	Avg.
OPT-1.3B	FP16	14.63	14.72	59.67	53.73	72.42	57.68	50.80	29.69	54.00
	GPTQ	9.5e3	3.8e3	49.33	25.57	52.07	39.60	26.68	23.63	36.15
	LLM-QAT	4.9e3	2.1e3	49.72	25.72	50.05	37.83	25.76	25.09	35.70
	OmniQuant	42.43	55.64	51.85	33.39	60.94	56.45	38.76	23.38	44.13
	OneBit	25.42	22.95	51.14	34.26	62.57	59.45	41.25	24.06	45.46
OPT-2.7B	FP16	12.47	13.17	60.93	60.59	74.81	60.28	54.34	31.31	57.04
	GPTQ	8.7e3	3.9e3	49.88	26.47	49.84	39.88	25.76	26.02	36.31
	LLM-QAT	3.7e3	1.4e3	52.09	25.47	49.29	37.83	24.92	25.60	35.87
	OmniQuant	30.25	41.31	51.62	38.21	62.19	54.25	40.82	24.74	45.31
	OneBit	21.86	20.76	51.67	38.18	63.87	54.28	43.39	24.40	45.97
LLaMA-7B	FP16	5.68	7.08	66.85	72.99	77.37	73.21	52.53	41.38	64.06
	GPTQ	1.9e3	7.8e2	49.41	25.63	49.95	43.79	25.84	27.47	37.02
	LLM-QAT	7.1e2	3.0e2	51.78	24.76	50.87	37.83	26.26	25.51	36.17
	OmniQuant	15.34	26.21	52.96	43.68	62.79	58.69	41.54	29.35	48.17
	OneBit	10.19	11.40	58.48	51.54	68.01	57.28	42.47	30.20	51.33
LLaMA-13B	FP16	5.09	6.61	70.17	76.24	79.05	68.47	59.85	44.54	66.39
	GPTQ	3.2e3	9.9e2	50.67	25.27	50.00	42.39	26.14	27.39	36.98
	LLM-QAT	1.8e3	1.2e3	51.62	25.40	50.33	37.83	27.02	26.87	36.51
	OmniQuant	13.43	19.33	53.83	54.16	68.99	62.20	45.50	30.38	52.51
	OneBit	9.18	10.25	62.90	56.78	70.67	64.16	44.53	32.00	55.17

4.2 Main Results

Table 2 compares our method with other typical strong baselines on different models. Due to space limitations, results of LLaMA2-7B/13B are listed in Appendix A.3. In various model sizes, our 1-bit weight quantization method obviously outperforms others under the W2A16 setting. Moreover, the effectiveness of QAT based methods consistently improves as the model size increases, whereas the result of the PTQ method, GPTQ, may degrade when model size increases (e.g., from 7B to 13B on LLaMA). This demonstrates that QAT-based method can achieve stable results in extremely low-bit quantization. Specifically, our method approaches the performance of FP16 more closely as the model size increases. For instance, when scaling from LLaMA-7B to LLaMA-13B, the perplexity (on C4) of the FP16 model decreases by only 0.47, whereas our method sees a reduction of 1.15.

For perplexity, only our method achieves comparable results to the strongest FP16 baseline. For instance, our method achieves 9.18 in the Wiki2 dataset on LLaMA-13B model and the FP16 baseline is 5.09. The performance loss of other methods is significant, even though they use 2-bit quantization, which is more than our 1 bit. For GPTQ and LLM-QAT, the performance degradation after quantization is pretty severe. As for OmniQuant, even though it is the strongest baseline under the W2A16 setting, it still suffers greater performance loss compared to our W1A16 setting.

For zero-shot accuracy, although all methods inevitably have some degradation, our method achieves the closest performance to the FP16 baseline among most models. On the OPT-1.3B/2.7B model, our method shows smaller performance loss on most tasks such as PIQA and ARC-e. Additionally, the loss of other tasks is negligible compared with the second-best baseline, OmniQuant. On the LLaMA-7B model, our method also notably outperforms OmniQuant in most tasks except BoolQ/ARC-e, averaging about a 4% improvement overall.

4.3 Problem Solving Ability

We have demonstrated the superior performance of our method under the W1A16 setting, compared to other representative baselines. Although all methods inevitably face performance degradation in

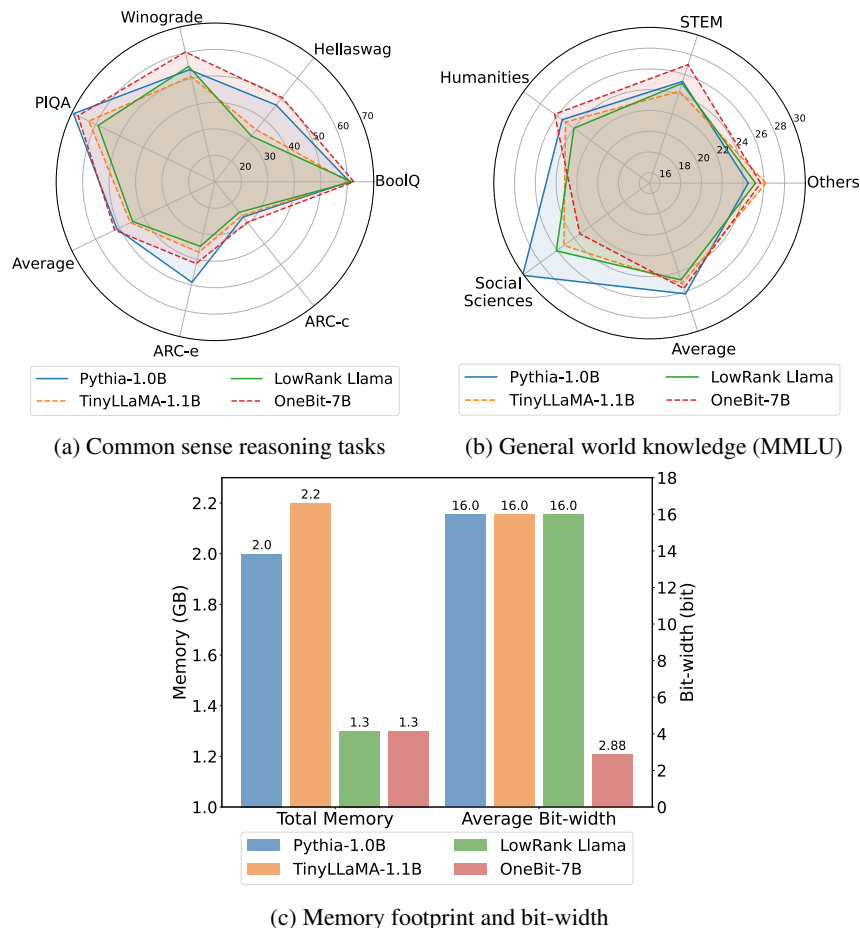


Figure 3: Comparison of model capabilities and compressive degree.

1-bit weight quantization, it remains of interest how our method fares in solving practical problems among the various approaches to reducing model size. For instance, directly training smaller models [42] or employing low-rank decomposition to reduce the number of parameters.

To this end, we consider two crucial abilities of LLMs: commonsense reasoning and world knowledge. For commonsense reasoning, we use the 6 tasks (Hellaswag, etc.) and settings described in Section 4.2. For world knowledge, we examine it using the Massive Multi-task Language Understanding (MMLU; 15), a benchmark that covers wide domains and knowledge. We compare the following 4 models:

Pythia-1.0B [3] A well-trained model released by EleutherAI whose memory footprint is 1.54x that of our OneBit-7B model.

TinyLLaMA-1.1B [42] A model with the same structure as the LLaMA models, which undergoes continued training. To compare fairly, we use the checkpoint at 10k training steps, which is 2x that of our OneBit-7B model.

LowRank LLaMA [24] Decompose every weight matrix in Linear layers to two low-rank matrices and learn from the original LLaMA-7B model by KD in the same setting of OneBit-7B.

OneBit-7B The model that we use in Section 4.2, which is built with OneBit.

Figure 3a and 3b demonstrate common sense reasoning ability and general world knowledge of different models. We can observe that, although other models have more parameters and are more thoroughly trained than ours, our model still has advantages in common sense reasoning. This reflects the benefits inherited from the larger 7B model. In terms of world knowledge, despite a significant loss in social sciences, our model outperforms the fully trained Pythia-1B in other domains. These results demonstrate the practical usability of OneBit.

Table 3: Compression ratio of LLaMA models.

Models	FP16 (GB)	OneBit (GB)	Ratio (%)
LLaMA-7B	13.5	1.3	90.4
LLaMA-13B	26.0	2.2	91.5
LLaMA-30B	65.1	4.9	92.5
LLaMA-65B	130.6	9.2	93.4

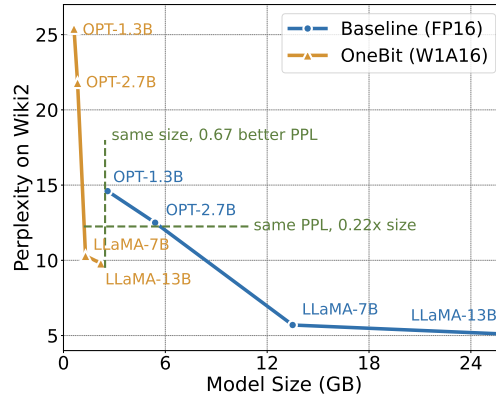


Figure 4: Tradeoff between size and PPL.

5 Analysis and Discussion

5.1 Efficiency

It is evident that extremely low-bit quantization of weights can significantly reduce the memory footprint of models. As shown in Table 3, the actual compression ratio increases as the model size increases. This is particularly meaningful for larger models, making it possible to fit the model into one GPU. While there is a performance loss, Figure 4 illustrates that our method achieves a good trade-off between space occupancy and model performance. For example, we can achieve comparable performance to FP16 with only 0.2x the model space. Furthermore, quantizing to ± 1 also aids in accelerating matrix multiplication on CPUs. It is because the floating-point multiplication of elements in two matrices can be converted into much faster bit operations on these chips. Thus the substantial reduction in memory overhead makes these low-bit LLMs meet the requirements for deployment on PCs and smartphones.

5.2 Robustness

Existing work [38] has already noted the instability within QAT. Extremely low-bit quantization makes the training process highly sensitive to the learning rate, making it difficult for the model to converge when the rate is too small or too large. This is primarily due to the large magnitude of gradients generated as the weight elements fluctuate between $+1$ and -1 , leading to substantial fluctuations in the output of Linear layers. Experiments demonstrate that OneBit shows more stable training process and is not sensitive to learning rates. Please refer to Appendix A.5 for more details.

5.3 Effect of Different Components

The variable components in our method primarily include Post-LayerNorm, value vectors, and parameter initialization.

Post-LayerNorm We discover that there might be floating-point overflow during the QAT process. As depth increases, the activation can become progressively larger. We tackle it using Post-LayerNorm instead of Pre-LayerNorm. In contrast, Pre-LayerNorm may occasionally be ineffective.

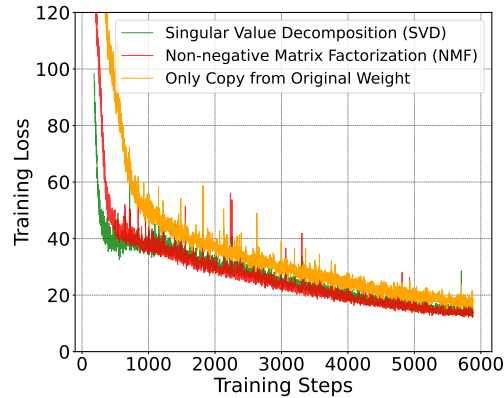


Figure 5: Training process of OneBit-7B.

Value Vectors The main structural difference between OneBit and BitNet [38] is the two value vectors, which are demonstrated to be effective in Section 4.2. They facilitate stable training and the knowledge transfer process. Please refer to Appendix A.5 for more details of comparison.

Parameter Initialization In our proposed SVID, both NMF and SVD can be used to decompose $|\mathbf{W}|$ and we recommend using the former. This is because we find that NMF may make the training more faster to converge. Figure 5 shows that initializing by NMF facilitates better performance.

6 Conclusion

We propose a novel model structure for 1-bit weight quantization and a corresponding parameter initialization method to address the difficulty in 1-bit quantization. Extensive experiments on LLMs of various sizes and series demonstrate that OneBit has clear advantages over representative strong baselines and achieves a good tradeoff between model size and performance. We further analyze the capabilities of such extremely low-bit quantized models and provide guidance for future research.

Acknowledgments

We gratefully acknowledge the support of the National Natural Science Foundation of China (NSFC) via grant 62236004, 62206078, 62441603 and 62476073. This work was also supported by the National Key Research and Development Program of China under grant 2023YFB4503000.

References

- [1] R. Agarwal, N. Vieillard, Y. Zhou, P. Stanczyk, S. R. Garea, M. Geist, and O. Bachem. On-policy distillation of language models: Learning from self-generated mistakes. In *Proceedings of the Twelfth International Conference on Learning Representations (ICLR)*, 2024.
- [2] E. Beltrami. Sulle funzioni bilineari, giornale di matematiche ad uso studenti delle univernsita. 11, 98–106.(an english translation by d boley is available as university of minnesota, department of computer science). Technical report, Technical Report 90–37, 1990.
- [3] S. Biderman, H. Schoelkopf, Q. G. Anthony, H. Bradley, K. O’Brien, E. Hallahan, M. A. Khan, S. Purohit, U. S. Prashanth, E. Raff, et al. Pythia: A suite for analyzing large language models across training and scaling. In *Proceedings of International Conference on Machine Learning (ICML)*, pages 2397–2430, 2023.
- [4] Y. Bisk, R. Zellers, J. Gao, Y. Choi, et al. PIQA: Reasoning about physical commonsense in natural language. In *Proceedings of the AAAI conference on artificial intelligence (AAAI)*, pages 7432–7439, 2020.

- [5] T. Brown, B. Mann, N. Ryder, M. Subbiah, J. D. Kaplan, P. Dhariwal, A. Neelakantan, P. Shyam, G. Sastry, A. Askell, et al. Language models are few-shot learners. *Advances in Neural Information Processing System (NeurIPS)*, 33:1877–1901, 2020.
- [6] S. Bubeck, V. Chandrasekaran, R. Eldan, J. Gehrke, E. Horvitz, E. Kamar, P. Lee, Y. T. Lee, Y. Li, S. Lundberg, et al. Sparks of artificial general intelligence: Early experiments with gpt-4. *arXiv preprint arXiv:2303.12712*, 2023.
- [7] C. Clark, K. Lee, M.-W. Chang, T. Kwiatkowski, M. Collins, and K. Toutanova. BoolQ: Exploring the surprising difficulty of natural yes/no questions. In *Proceedings of the 2019 Conference of the North American Chapter of the Association for Computational Linguistics: Human Language Technologies (NAACL-HLT)*, pages 2924–2936, 2019.
- [8] P. Clark, I. Cowhey, O. Etzioni, T. Khot, A. Sabharwal, C. Schoenick, and O. Tafjord. Think you have solved question answering? Try ARC, the AI2 Reasoning Challenge. *arXiv preprint arXiv:1803.05457*, 2018.
- [9] T. Dettmers and L. Zettlemoyer. The case for 4-bit precision: k-bit inference scaling laws. In *Proceedings of International Conference on Machine Learning (ICML)*, pages 7750–7774, 2023.
- [10] T. Dettmers, M. Lewis, Y. Belkada, and L. Zettlemoyer. LLM.int8(): 8-bit matrix multiplication for transformers at scale. *Advances in Neural Information Processing System (NeurIPS)*, 35: 30318–30332, 2022.
- [11] T. Dettmers, A. Pagnoni, A. Holtzman, and L. Zettlemoyer. QLoRA: Efficient finetuning of quantized LLMs. *Advances in Neural Information Processing System (NeurIPS)*, 36:10088–10115, 2023.
- [12] T. Dettmers, R. Svirschevski, V. Egiazarian, D. Kuznedelev, E. Frantar, S. Ashkboos, A. Borzunov, T. Hoefler, and D. Alistarh. SpQR: A sparse-quantized representation for near-lossless llm weight compression. In *Proceedings of the Twelfth International Conference on Learning Representations (ICLR)*, 2024.
- [13] E. Frantar and D. Alistarh. SparseGPT: Massive language models can be accurately pruned in one-shot. In *Proceedings of International Conference on Machine Learning (ICML)*, pages 10323–10337, 2023.
- [14] E. Frantar, S. Ashkboos, T. Hoefler, and D. Alistarh. GPTQ: Accurate post-training quantization for generative pre-trained transformers. *arXiv preprint arXiv:2210.17323*, 2022.
- [15] D. Hendrycks, C. Burns, S. Basart, A. Zou, M. Mazeika, D. Song, and J. Steinhardt. Measuring massive multitask language understanding. In *Proceedings of the Ninth International Conference on Learning Representations (ICLR)*, 2021.
- [16] C.-Y. Hsieh, C.-L. Li, C.-k. Yeh, H. Nakhost, Y. Fujii, A. Ratner, R. Krishna, C.-Y. Lee, and T. Pfister. Distilling step-by-step! outperforming larger language models with less training data and smaller model sizes. In *Findings of the Association for Computational Linguistics (ACL)*, pages 8003–8017, 2023.
- [17] J. Kim, J. H. Lee, S. Kim, J. Park, K. M. Yoo, S. J. Kwon, and D. Lee. Memory-efficient fine-tuning of compressed large language models via sub-4-bit integer quantization. *Advances in Neural Information Processing System (NeurIPS)*, 36:36187–36207, 2023.
- [18] S. Kim, C. Hooper, A. Gholami, Z. Dong, X. Li, S. Shen, M. W. Mahoney, and K. Keutzer. SqueezeLLM: Dense-and-sparse quantization. In *Proceedings of International Conference on Machine Learning (ICML)*, pages 23901–23923, 2024.
- [19] D. P. Kingma and J. Ba. Adam: A method for stochastic optimization. In *Proceedings of the Third International Conference on Learning Representations (ICLR)*, 2015.
- [20] J. Lin, J. Tang, H. Tang, S. Yang, W.-M. Chen, W.-C. Wang, G. Xiao, X. Dang, C. Gan, and S. Han. AWQ: Activation-aware weight quantization for on-device llm compression and acceleration. *Proceedings of Machine Learning and Systems*, 6:87–100, 2024.

- [21] Z. Liu, B. Oguz, C. Zhao, E. Chang, P. Stock, Y. Mehdad, Y. Shi, R. Krishnamoorthi, and V. Chandra. LLM-QAT: Data-free quantization aware training for large language models. In *Findings of the Association for Computational Linguistics (ACL)*, pages 467–484, 2024.
- [22] X. Ma, G. Fang, and X. Wang. LLM-Pruner: On the structural pruning of large language models. *Advances in Neural Information Processing System (NeurIPS)*, 36:21702–21720, 2023.
- [23] S. Merity, C. Xiong, J. Bradbury, and R. Socher. Pointer sentinel mixture models. In *Proceedings of the Fifth International Conference on Learning Representations (ICLR)*, 2017.
- [24] M. B. Noach and Y. Goldberg. Compressing pre-trained language models by matrix decomposition. In *Proceedings of the 1st Conference of the Asia-Pacific Chapter of the Association for Computational Linguistics and the 10th International Joint Conference on Natural Language Processing (ACL-IJCNLP)*, pages 884–889, 2020.
- [25] P. Paatero and U. Tapper. Positive matrix factorization: A non-negative factor model with optimal utilization of error estimates of data values. *Environmetrics*, 5(2):111–126, 1994.
- [26] B. Peng, C. Li, P. He, M. Galley, and J. Gao. Instruction tuning with gpt-4. *arXiv preprint arXiv:2304.03277*, 2023.
- [27] A. Radford, J. Wu, R. Child, D. Luan, D. Amodei, I. Sutskever, et al. Language models are unsupervised multitask learners. *OpenAI blog*, 1(8):9, 2019.
- [28] C. Raffel, N. Shazeer, A. Roberts, K. Lee, S. Narang, M. Matena, Y. Zhou, W. Li, and P. J. Liu. Exploring the limits of transfer learning with a unified text-to-text transformer. *The Journal of Machine Learning Research*, 21(1):5485–5551, 2020.
- [29] K. Sakaguchi, R. L. Bras, C. Bhagavatula, and Y. Choi. Winogrande: An adversarial winograd schema challenge at scale. *Communications of the ACM*, 64(9):99–106, 2021.
- [30] W. Shao, M. Chen, Z. Zhang, P. Xu, L. Zhao, Z. Li, K. Zhang, P. Gao, Y. Qiao, and P. Luo. OmniQuant: Omnidirectionally calibrated quantization for large language models. In *Proceedings of the Twelfth International Conference on Learning Representations (ICLR)*, 2024.
- [31] M. Sun, Z. Liu, A. Bair, and J. Z. Kolter. A simple and effective pruning approach for large language models. In *Proceedings of the Twelfth International Conference on Learning Representations (ICLR)*, 2024.
- [32] S. Sun, Y. Cheng, Z. Gan, and J. Liu. Patient knowledge distillation for BERT model compression. In *Proceedings of the 2019 Conference on Empirical Methods in Natural Language Processing and the 9th International Joint Conference on Natural Language Processing (EMNLP-IJCNLP)*, pages 4323–4332, 2019.
- [33] R. Taori, I. Gulrajani, T. Zhang, Y. Dubois, X. Li, C. Guestrin, P. Liang, and T. B. Hashimoto. Stanford alpaca: An instruction-following llama model. https://github.com/tatsu-lab/stanford_alpaca, 2023.
- [34] H. Touvron, T. Lavril, G. Izacard, X. Martinet, M.-A. Lachaux, T. Lacroix, B. Rozière, N. Goyal, E. Hambro, F. Azhar, et al. LLaMA: Open and efficient foundation language models. *arXiv preprint arXiv:2302.13971*, 2023.
- [35] A. Tseng, J. Chee, Q. Sun, V. Kuleshov, and C. De Sa. QuIP#: Even better llm quantization with hadamard incoherence and lattice codebooks. In *Proceedings of International Conference on Machine Learning (ICML)*, pages 48630–48656, 2024.
- [36] A. Vaswani, N. Shazeer, N. Parmar, J. Uszkoreit, L. Jones, A. N. Gomez, Ł. Kaiser, and I. Polosukhin. Attention is all you need. *Advances in Neural Information Processing System (NeurIPS)*, 30, 2017.
- [37] Z. Wan, X. Wang, C. Liu, S. Alam, Y. Zheng, J. Liu, Z. Qu, S. Yan, Y. Zhu, Q. Zhang, M. Chowdhury, and M. Zhang. Efficient large language models: A survey. *Transactions on Machine Learning Research*, 2024. ISSN 2835-8856.

- [38] H. Wang, S. Ma, L. Dong, S. Huang, H. Wang, L. Ma, F. Yang, R. Wang, Y. Wu, and F. Wei. BitNet: Scaling 1-bit transformers for large language models. *arXiv preprint arXiv:2310.11453*, 2023.
- [39] G. Xiao, J. Lin, M. Seznec, H. Wu, J. Demouth, and S. Han. SmoothQuant: Accurate and efficient post-training quantization for large language models. In *Proceedings of International Conference on Machine Learning (ICML)*, pages 38087–38099, 2023.
- [40] M. Xu, Y. L. Xu, and D. P. Mandic. TensorGPT: Efficient compression of the embedding layer in llms based on the tensor-train decomposition. *arXiv preprint arXiv:2307.00526*, 2023.
- [41] R. Zellers, A. Holtzman, Y. Bisk, A. Farhadi, and Y. Choi. Hellaswag: Can a machine really finish your sentence? In *Proceedings of the 57th Annual Meeting of the Association for Computational Linguistics (ACL)*, pages 4791–4800, 2019.
- [42] P. Zhang, G. Zeng, T. Wang, and W. Lu. TinyLlama: An open-source small language model. *arXiv preprint arXiv:2401.02385*, 2024.
- [43] X. Zhu, J. Li, Y. Liu, C. Ma, and W. Wang. A survey on model compression for large language models. *arXiv preprint arXiv:2308.07633*, 2023.

A Appendix

A.1 Proofs of Propositions

In this section, we provide the necessary and detailed proofs for the propositions presented in this paper. All symbols have the same definition as in the main text.

Proposition 1 Given the weight matrix \mathbf{W} and input \mathbf{X} , the Linear layer can be reformulated as the following according to SVID:

$$\mathbf{X}\mathbf{W}^T \approx [(\mathbf{X} \odot \mathbf{b}^T) \mathbf{W}_{\text{sign}}^T] \odot \mathbf{a}^T.$$

Proof From Eq. (4), we have $w_{ij} \approx s_{ij} \cdot a_i b_j$, where s_{ij} is the element of \mathbf{W}_{sign} . Hence we have

$$\begin{aligned} (\mathbf{X}\mathbf{W}^T)_{ij} &\approx \sum_k x_{ik} w_{kj}^T = \sum_k x_{ik} w_{jk} \\ &= \sum_k x_{ik} s_{jk} a_j b_k \\ &= \sum_k x_{ik} b_k s_{jk} a_j \\ &= \sum_k (\mathbf{X} \odot \mathbf{b}^T)_{ik} s_{kj}^T a_j \\ &= [(\mathbf{X} \odot \mathbf{b}^T) \mathbf{W}_{\text{sign}}^T]_{ij} a_j \\ &= \left\{ [(\mathbf{X} \odot \mathbf{b}^T) \mathbf{W}_{\text{sign}}^T] \odot \mathbf{a}^T \right\}_{ij}. \end{aligned}$$

This proposition is proved.

Lemma 1 Let $\sigma_i(\mathbf{W})$ denote the i -th biggest singular value of matrix \mathbf{W} . The following inequality holds:

$$\sigma_1(|\mathbf{W}|) \geq \sigma_1(\mathbf{W}).$$

Proof According to the definition of induced norm, there are

$$\begin{aligned} \sigma_1(\mathbf{W}) &= \|\mathbf{W}\|_2 = \max_{\mathbf{x}, \|\mathbf{x}\|_2=1} \|\mathbf{W}\mathbf{x}\|_2, \\ \sigma_1(|\mathbf{W}|) &= \||\mathbf{W}|\|_2 = \max_{\mathbf{y}, \|\mathbf{y}\|_2=1} \||\mathbf{W}|\mathbf{y}\|_2. \end{aligned}$$

Note that for $\forall \mathbf{x}$, $\|\mathbf{x}\|_2 = 1$ and we have

$$\begin{aligned} \||\mathbf{W}|\mathbf{x}\|_2^2 &= \sum_i \left(\sum_j |w_{ij}| |x_j| \right)^2 \\ &\geq \sum_i \left(\left| \sum_j w_{ij} x_j \right| \right)^2 \\ &= \sum_i \left(\sum_j w_{ij} x_j \right)^2 = \|\mathbf{W}\mathbf{x}\|_2^2. \end{aligned}$$

Therefore

$$\max_{\mathbf{y}, \|\mathbf{y}\|_2=1} \||\mathbf{W}|\mathbf{y}\|_2 \geq \max_{\mathbf{x}, \|\mathbf{x}\|_2=1} \|\mathbf{W}\mathbf{x}\|_2.$$

This lemma is proved.

Proposition 2 Given matrices \mathbf{W} and $|\mathbf{W}|$, $\mathbf{W} = \mathbf{W}_{\text{sign}} \odot |\mathbf{W}|$. We decompose these matrices in the way $\mathbf{W} = \mathbf{a}\mathbf{b}^T + \mathbf{E}_1$ and $|\mathbf{W}| = \tilde{\mathbf{a}}\tilde{\mathbf{b}}^T + \mathbf{E}_2$, where \mathbf{E}_i denotes the error matrices. In terms of the Frobenius-norm, the SVID is closer to the original matrix \mathbf{W} :

$$\|\mathbf{W} - \mathbf{W}_{\text{sign}} \odot \tilde{\mathbf{a}}\tilde{\mathbf{b}}^T\|_F^2 \leq \|\mathbf{W} - \mathbf{a}\mathbf{b}^T\|_F^2.$$

Proof Here we consider SVD to prove it. For SVD, the norm of the error matrix \mathbf{E} in the rank-1 approximation is the sum of the squares of all singular values except for the largest one. We have

$$\begin{aligned}\|\mathbf{E}_1\|_F^2 &= \sum_{i=2}^n \sigma_i^2(\mathbf{W}), \\ \|\mathbf{E}_2\|_F^2 &= \sum_{i=2}^n \sigma_i^2(|\mathbf{W}|).\end{aligned}$$

Based on $\|\mathbf{W}\|_F^2 = \|\mathbf{W}\|_F^2$, we have

$$\sum_{i=1}^n \sigma_i^2(\mathbf{W}) = \sum_{i=1}^n \sigma_i^2(|\mathbf{W}|).$$

According to Lemma 1, we can conclude

$$\|\mathbf{E}_2\|_F^2 \leq \|\mathbf{E}_1\|_F^2.$$

From the equation in this proposition, we can formulate

$$\mathbf{W}_{\text{sign}} \odot |\mathbf{W}| = \mathbf{W}_{\text{sign}} \odot \tilde{\mathbf{a}}\tilde{\mathbf{b}}^T + \mathbf{W}_{\text{sign}} \odot \mathbf{E}_2.$$

Hence we have

$$\mathbf{W} - \mathbf{W}_{\text{sign}} \odot \tilde{\mathbf{a}}\tilde{\mathbf{b}}^T = \mathbf{W}_{\text{sign}} \odot \mathbf{E}_2.$$

Therefore

$$\begin{aligned}\|\mathbf{W}_{\text{sign}} \odot \mathbf{E}_2\|_F^2 &= \sum_{i,j} s_{ij}^2 e_{ij}^2 = \sum_{i,j} e_{ij}^2 \\ &= \|\mathbf{E}_2\|_F^2 \leq \|\mathbf{E}_1\|_F^2,\end{aligned}$$

where $s_{ij} = \pm 1$ is the element of \mathbf{W}_{sign} . Hence the inequation in this proposition is proved.

A.2 Details on Baselines

In this subsection, we provide the essential details of the baselines in this work:

- GPTQ [14]: We employ the open-source code released by the author. Both OPT models and LLaMA models take 128 2048-token samples from the C4 dataset to calibrate the quantized model. For LLaMA models, we apply the activation order heuristic according to the recommendation from the code.
- LLM-QAT [21]: We reimplement this method to adapt the W2A16 setting, as LLM-QAT is not designed for 2-bit weight quantization. We also do not quantize the KV Cache. When quantizing the weight matrix in Linear layer, we use symmetric MinMax quantization in which the zero-point is set to 0. The training hyper-parameters are the same as ours. Please refer to the training details in Section 4.1.
- OmniQuant [30]: We employ the open-source code released by the author. Both OPT models and LLaMA models take 128 2048-token samples from the WikiText2 dataset to calibrate the quantized model. The learning rate for learnable weight clipping and equivalent transformation is set to 5e-3 and 1e-2, respectively. We use a batch size of 1 and train 40 epochs for each model. For OPT models, both learnable weight clipping and equivalent transformation are leveraged. For LLaMA models, only learnable weight clipping is used.

A.3 Results of LLaMA2

Table 4 compares the results on LLaMA2-7B/13B. Obviously, our method has advantages in both perplexity and zero-shot accuracy. It also reflects that the advantages of our method are more pronounced in larger models. For instance, when scaling from LLaMA2-7B to LLaMA2-13B, the perplexity of the FP16 model decreases by around only 0.5, whereas our method reduces it by around 1.0 on both Wiki2 and C4 datasets.

Table 4: Results of LLaMA2. We bold the **best** scores.

Models	Methods	Perplexity(↓)			Zero-shot Accuracy(↑)					
		Wiki2	C4	Wino.	Hella.	PIQA	BoolQ	ARC-e	ARC-c	Avg.
LLaMA2-7B	FP16	5.47	6.97	67.09	72.94	76.88	71.10	53.58	40.61	63.70
	GPTQ	7.7e3	NAN	50.28	26.19	49.46	42.97	26.77	28.58	37.38
	LLM-QAT	1.1e3	6.6e2	49.08	25.10	50.12	37.83	26.26	26.96	35.89
	OmniQuant	31.21	64.34	51.22	33.87	56.53	59.14	33.63	24.32	43.12
	OneBit	9.73	11.11	58.41	52.58	68.12	63.06	41.58	29.61	52.23
LLaMA2-13B	FP16	4.88	6.47	69.77	76.62	79.05	68.99	57.95	44.20	66.10
	GPTQ	2.1e3	3.2e2	51.85	25.67	51.74	40.61	25.46	27.30	37.11
	LLM-QAT	5.1e2	1.1e3	51.38	24.37	49.08	39.85	27.15	24.32	36.03
	OmniQuant	16.88	27.02	53.20	50.34	62.24	62.05	40.66	29.61	49.68
	OneBit	8.76	10.15	61.72	56.43	70.13	65.20	43.10	33.62	55.03

A.4 Instruction Following Ability

Instruction following is an important ability of LLMs [27, 5, 26]. Beyond the discussion on model abilities and efficiency before, we also focus on the instruction following ability of extremely low-bit models, which is closely related to their practical usability. In this subsection, we empirically study this capability of our quantized model. We fine-tune the model for 3 epochs using the alpaca_en_52k dataset and alpaca templates [33], then observe the generation in both zero-shot and few-shot settings before and after fine-tuning. During training, the learning rate is set to 1e-7 and the batch size to 32. Other parameters are consistent with Section 4.1.

Table 5 demonstrates the content generation and instruction following abilities of our 7B model. Under the zero-shot setting, the model without SFT produced verbose, repetitive, and low-quality text. However, once experienced to SFT, our model is able to smoothly output high-quality content, exhibiting excellent instruction following ability. For the few-shot setting, our model exhibits instruction following ability both before and after SFT.

A.5 Comparison with BitNet

Recently, BitNet [38] introduces a 1-bit model architecture and applies the architecture to train models from scratch, demonstrating the feasibility and application value of the 1-bit model structure. In this paper, we attempt to combine 1-bit quantization with knowledge distillation to quantize the LLaMA-7B model. Unfortunately, despite following the suggestion to use larger learning rates, the behavior remains unstable during training.

Figure 6 shows that the training process of BitNet may suffer from instability during knowledge distillation. We conjecture that it is because the gradient is pretty large when the weight elements fluctuate between +1 and -1, further aggravating the output of the Linear layer.

As a more effective measure, the value vectors we propose for quantization not only supplement the necessary floating-point numerical precision but also limit the fluctuation range of the matrix multiplication results after quantization. This can be understood from forward and backward computation, respectively.

Forward stability. Quantized matrix multiplication is more prone to overflow than FP16 counterparts in response to minor perturbations of input activations. This is because the magnitude of

Table 5: Instruction following cases in zero-shot and few-shot settings before and after Supervised Fine-Tuning (SFT). The few-shot examples are from MMLU benchmark.

Zero-shot w/o SFT	<p>Prompt: List several Windows operating systems developed by Microsoft corporation.</p> <p>Generation: Microsoft Windows 10 is a free operating system developed by Microsoft for use on personal computers and tablets. It was first released to the public on 29 April 2014. Microsoft Windows 10 is a free operating system developed by Microsoft for use on personal computers and tablets. It was first released to the public on 29 April 2014. Windows 10 is the successor to Windows 8.1. Microsoft Windows 10 is a free operating system developed by Microsoft for use on personal computers and tablets. It was first released to the public on 29 April 2014. Windows 10 is the successor to Windows 8.1. Windows 10 is the successor to Windows 8.1. Microsoft Windows 10 is a free operating system developed by Microsoft for use on personal computers and tablets.</p>
Zero-shot w/ SFT	<p>Prompt: Below is an instruction that describes a task. Write a response that appropriately completes the request. ### Instruction: List several Windows operating systems developed by Microsoft corporation. ### Response:</p> <p>Generation: Microsoft has developed several Windows operating systems, including Windows 10, Windows 8, Windows 7, Windows XP, Windows 2000, Windows NT, Windows ME, Windows 95, and Windows 1. Windows 10 is the latest version of the Windows operating system. It was released in 2019. Windows 8 was released in 2011. Windows 7 was released in 2009. Windows XP was released in 2001. Windows NT was released in 1997. Windows ME was released in 1999. Windows 95 was released in 1995. Windows 1 was released in...</p>
Few-shot w/o SFT	<p>Prompt: The following are multiple choice questions (with answers) about college biology. Which of the following contain DNA sequences required for the segregation of chromosomes in mitosis and meiosis? A. Telomeres B. Centromeres C. Nucleosomes D. Spliceosomes Answer: B. The Barr body found within female mammalian cells' nuclei is an example of: A. euchromatin B. heterochromatin C. a cistron D. pseudogenes Answer: B. Cleavage symmetry arising from early cell divisions that occur at an oblique angle to the polar axis is known as: A. meroblastic cleavage B. radial cleavage C. spiral cleavage D. superficial cleavage Answer: C. Which of the following is NOT a source of atmospheric carbon? A. Respiration B. Photosynthesis C. Bacterial decomposition D. Combustion of fossil fuels Answer: B. The concept of punctuated equilibrium refers to: A. oscillating ecological successional stages B. ecological succession arrested by sudden environmental changes, e.g., fire C. persistent predator-prey relationships in relatively stable environments D. bursts of speciation followed by relatively unchanging lineages Answer: D. Which of the following is a second messenger that stimulates release of calcium ions into the cytoplasm? A. Prostaglandins B. Calmodulin C. Cyclic AMP D. Inositol triphosphate Answer: B</p> <p>Generation: B</p>
Few-shot w/ SFT	<p>Prompt: Below is an instruction that describes a task. Write a response that appropriately completes the request. ### Instruction: The following are multiple choice questions (with answers) about college biology. Which of the following contain DNA sequences required for the segregation of chromosomes in mitosis and meiosis? A. Telomeres B. Centromeres C. Nucleosomes D. Spliceosomes Answer: B. The Barr body found within female mammalian cells' nuclei is an example of: A. euchromatin B. heterochromatin C. a cistron D. pseudogenes Answer: B. Cleavage symmetry arising from early cell divisions that occur at an oblique angle to the polar axis is known as: A. meroblastic cleavage B. radial cleavage C. spiral cleavage D. superficial cleavage Answer: C. Which of the following is NOT a source of atmospheric carbon? A. Respiration B. Photosynthesis C. Bacterial decomposition D. Combustion of fossil fuels Answer: B. The concept of punctuated equilibrium refers to: A. oscillating ecological successional stages B. ecological succession arrested by sudden environmental changes, e.g., fire C. persistent predator-prey relationships in relatively stable environments D. bursts of speciation followed by relatively unchanging lineages Answer: D. Which of the following is a second messenger that stimulates release of calcium ions into the cytoplasm? A. Prostaglandins B. Calmodulin C. Cyclic AMP D. Inositol triphosphate Answer: B</p> <p>Generation: D</p>

elements in quantized matrices, particularly the value ± 1 , is far greater than the parameters of most FP16 matrices. By multiplying by value vectors of a magnitude similar to that of the FP16 model, the range of variation in model output activations can be restored to the level of FP16. Furthermore, we also avoid the increasingly large “drift phenomenon” of activations through Post-LayerNorm.

Backward stability. Since $\text{Sign}(\cdot)$ function is not differentiable, when the elements of the matrix change, their gradient may become infinite. Similar to forward stability, by multiplying two numerically smaller value vectors, we avoid layer-by-layer accumulation and explosion during gradient back-propagation. Moreover, we implement the derivative function of $\text{Sign}(\cdot)$ using the derivative of the hyperbolic tangent function, thereby avoiding the problem of gradient explosion at the zero point of every weight.

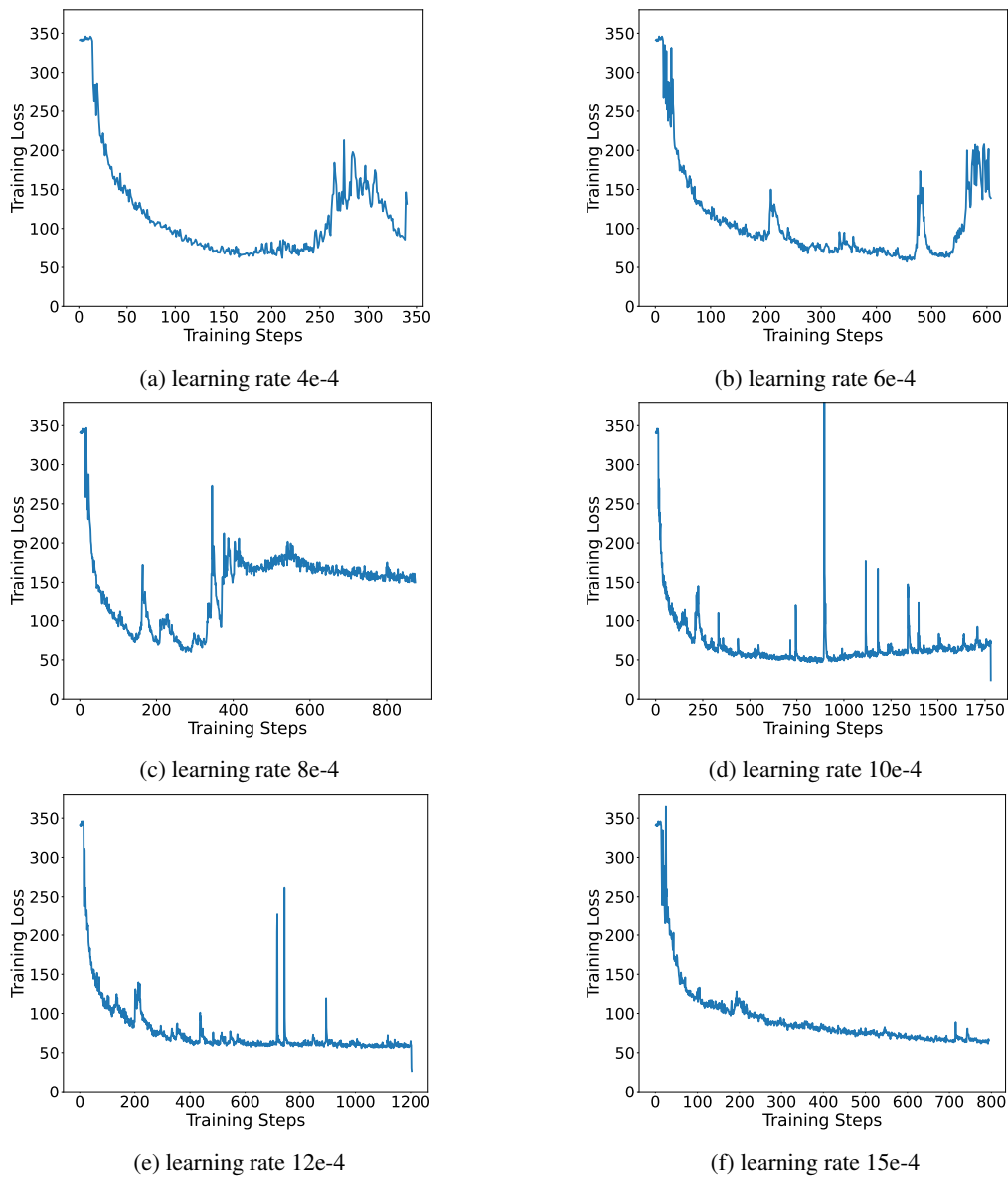


Figure 6: Training comparisons among different learning rates when BitNet performs knowledge distillation from LLaMA-7B. Here we choose the same W1A16 setting as ours. The weight matrices in BitNet are directly copied from the original LLaMA-7B model.

Table 6: Ablation study of different loss on LLaMA-7B. “ATTN” means attention score alignment.

Loss Setting	Perplexity(\downarrow)				Zero-shot Accuracy(\uparrow)				
	Wiki2	C4	Wino.	Hella.	PIQA	BoolQ	ARC-e	ARC-c	Avg.
\mathcal{L}_{KD}	13.48	14.57	50.83	35.14	62.89	60.46	37.33	26.37	45.50
$\mathcal{L}_{\text{KD}} + \mathcal{L}_{\text{MSE}} (\alpha = 1)$	10.19	11.40	58.48	51.54	68.01	57.28	42.47	30.20	51.33
$\mathcal{L}_{\text{KD}} + \mathcal{L}_{\text{MSE}} (\alpha = 10)$	10.38	11.56	60.30	50.73	67.46	62.51	41.71	29.61	52.05
$\mathcal{L}_{\text{KD}} + \mathcal{L}_{\text{MSE}} + \mathcal{L}_{\text{ATTN}}$	NAN	NAN	-	-	-	-	-	-	-

A.6 Discussion on Knowledge Distillation

Although knowledge distillation is not the main contribution of this paper, we nevertheless provide the rationale behind certain settings used in our experiments to explain the necessity of these configurations.

We firstly explain the role of different loss functions in guiding the process of knowledge transfer. Fundamentally, distillation loss alone can achieve a satisfactory transfer process (comparing to other baselines). Additionally, as shown in the Table 6, aligning the hidden states between layers can result in a quantized model with better perplexity. However, further incorporating attention score alignment on this basis leads to the model failing to converge. LLM-QAT [21] has conducted similar experiments on quantization-aware knowledge distillation loss and concluded that using only the distillation loss yields the best results. The difference in conclusions may stem from two factors. On one hand, due to our adoption of a novel model architecture, which differs from theirs, the optimal usage of loss functions may be different as well. On the other hand, as we focus on extremely low bit-width compression, each layer of the model suffers significant information loss compared to the teacher model. The regularization of hidden states between layers may help reduce the variance in the learning process, thus demonstrating stronger generalization.

Furthermore, we also discuss the cost of our quantization method. Using LLaMA-7B as an example, quantizing the model with our method requires approximately 7 days on 8 A100-80GB GPUs. In comparison, training the LLaMA-7B model from scratch consumes 82,432 GPU hours [34]. The quantization time, being less than 2% of the pretraining time, is still an acceptable cost.

A.7 Average Bit-width of Linear Layer

This subsection formulates the calculation of the average bit-width of Linear layers. Assume there is a weight matrix with a shape of 4096×4096 in such a layer, the number of bits in every component is

$$\begin{aligned} &1 \times 4096 \times 4096, \\ &16 \times 1 \times 4096 \times 2, \end{aligned}$$

where the first is for the 1-bit quantized weight matrix and the second is for the two FP16 value vectors. Hence the overall number of bits is 16,908,288. Moreover, the number of parameters is $4096 \times 4096 + 2 \times 4096 \times 1 = 16,785,408$. Therefore, the average bit-width of this Linear layer is $16,908,288 \div 16,785,408 \approx 1.0073$.

B Limitations

Although our proposed method significantly reduces the memory footprint of LLMs, bringing hope for efficient deployment of them, there are still some limitations. Firstly, compared to the original model, our extremely low-bit quantization inevitably incurs a performance loss. Additionally, we are yet to understand the mathematical principles behind the optimal parameters of the 1-bit quantized model, thus capability transfer can only be achieved through the relatively costly process of KD. Fortunately, this cost is a one-time expense. Moreover, due to the unique nature of 1-bit quantization, our method can not be naturally extended to higher bit-width. Lastly, we have not considered the activation quantization and leave it as future work.

C Ethics Statement

In this study, we employ models that are publicly available and open source. We affirm that the use of these models aligns with their original intended purposes. These models have been utilized strictly within the scope of academic and research-based activities, adhering to ethical guidelines and ensuring compliance with open-source licenses.

NeurIPS Paper Checklist

1. Claims

Question: Do the main claims made in the abstract and introduction accurately reflect the paper's contributions and scope?

Answer: [\[Yes\]](#)

Justification: The abstract and introduction accurately reflect the paper's contributions and scope.

Guidelines:

- The answer NA means that the abstract and introduction do not include the claims made in the paper.
- The abstract and/or introduction should clearly state the claims made, including the contributions made in the paper and important assumptions and limitations. A No or NA answer to this question will not be perceived well by the reviewers.
- The claims made should match theoretical and experimental results, and reflect how much the results can be expected to generalize to other settings.
- It is fine to include aspirational goals as motivation as long as it is clear that these goals are not attained by the paper.

2. Limitations

Question: Does the paper discuss the limitations of the work performed by the authors?

Answer: [\[Yes\]](#)

Justification: We thoroughly elaborate on several limitations of this paper in Sec. B.

Guidelines:

- The answer NA means that the paper has no limitation while the answer No means that the paper has limitations, but those are not discussed in the paper.
- The authors are encouraged to create a separate "Limitations" section in their paper.
- The paper should point out any strong assumptions and how robust the results are to violations of these assumptions (e.g., independence assumptions, noiseless settings, model well-specification, asymptotic approximations only holding locally). The authors should reflect on how these assumptions might be violated in practice and what the implications would be.
- The authors should reflect on the scope of the claims made, e.g., if the approach was only tested on a few datasets or with a few runs. In general, empirical results often depend on implicit assumptions, which should be articulated.
- The authors should reflect on the factors that influence the performance of the approach. For example, a facial recognition algorithm may perform poorly when image resolution is low or images are taken in low lighting. Or a speech-to-text system might not be used reliably to provide closed captions for online lectures because it fails to handle technical jargon.
- The authors should discuss the computational efficiency of the proposed algorithms and how they scale with dataset size.
- If applicable, the authors should discuss possible limitations of their approach to address problems of privacy and fairness.
- While the authors might fear that complete honesty about limitations might be used by reviewers as grounds for rejection, a worse outcome might be that reviewers discover limitations that aren't acknowledged in the paper. The authors should use their best judgment and recognize that individual actions in favor of transparency play an important role in developing norms that preserve the integrity of the community. Reviewers will be specifically instructed to not penalize honesty concerning limitations.

3. Theory Assumptions and Proofs

Question: For each theoretical result, does the paper provide the full set of assumptions and a complete (and correct) proof?

Answer: [\[Yes\]](#)

Justification: We provide proofs of all propositions and lemma in A.1.

Guidelines:

- The answer NA means that the paper does not include theoretical results.
- All the theorems, formulas, and proofs in the paper should be numbered and cross-referenced.
- All assumptions should be clearly stated or referenced in the statement of any theorems.
- The proofs can either appear in the main paper or the supplemental material, but if they appear in the supplemental material, the authors are encouraged to provide a short proof sketch to provide intuition.
- Inversely, any informal proof provided in the core of the paper should be complemented by formal proofs provided in appendix or supplemental material.
- Theorems and Lemmas that the proof relies upon should be properly referenced.

4. Experimental Result Reproducibility

Question: Does the paper fully disclose all the information needed to reproduce the main experimental results of the paper to the extent that it affects the main claims and/or conclusions of the paper (regardless of whether the code and data are provided or not)?

Answer: [\[Yes\]](#)

Justification: All experimental results can be reproduced easily, we release the main framework in the submitted code.

Guidelines:

- The answer NA means that the paper does not include experiments.
- If the paper includes experiments, a No answer to this question will not be perceived well by the reviewers: Making the paper reproducible is important, regardless of whether the code and data are provided or not.
- If the contribution is a dataset and/or model, the authors should describe the steps taken to make their results reproducible or verifiable.
- Depending on the contribution, reproducibility can be accomplished in various ways. For example, if the contribution is a novel architecture, describing the architecture fully might suffice, or if the contribution is a specific model and empirical evaluation, it may be necessary to either make it possible for others to replicate the model with the same dataset, or provide access to the model. In general, releasing code and data is often one good way to accomplish this, but reproducibility can also be provided via detailed instructions for how to replicate the results, access to a hosted model (e.g., in the case of a large language model), releasing of a model checkpoint, or other means that are appropriate to the research performed.
- While NeurIPS does not require releasing code, the conference does require all submissions to provide some reasonable avenue for reproducibility, which may depend on the nature of the contribution. For example
 - (a) If the contribution is primarily a new algorithm, the paper should make it clear how to reproduce that algorithm.
 - (b) If the contribution is primarily a new model architecture, the paper should describe the architecture clearly and fully.
 - (c) If the contribution is a new model (e.g., a large language model), then there should either be a way to access this model for reproducing the results or a way to reproduce the model (e.g., with an open-source dataset or instructions for how to construct the dataset).
 - (d) We recognize that reproducibility may be tricky in some cases, in which case authors are welcome to describe the particular way they provide for reproducibility. In the case of closed-source models, it may be that access to the model is limited in some way (e.g., to registered users), but it should be possible for other researchers to have some path to reproducing or verifying the results.

5. Open access to data and code

Question: Does the paper provide open access to the data and code, with sufficient instructions to faithfully reproduce the main experimental results, as described in supplemental material?

Answer: [Yes]

Justification: We release the main framework in the submitted code. Moreover, everyone can fetch all code, instructions, and data of this work in our open-source repo once this review process is complete.

Guidelines:

- The answer NA means that paper does not include experiments requiring code.
- Please see the NeurIPS code and data submission guidelines (<https://nips.cc/public/guides/CodeSubmissionPolicy>) for more details.
- While we encourage the release of code and data, we understand that this might not be possible, so “No” is an acceptable answer. Papers cannot be rejected simply for not including code, unless this is central to the contribution (e.g., for a new open-source benchmark).
- The instructions should contain the exact command and environment needed to run to reproduce the results. See the NeurIPS code and data submission guidelines (<https://nips.cc/public/guides/CodeSubmissionPolicy>) for more details.
- The authors should provide instructions on data access and preparation, including how to access the raw data, preprocessed data, intermediate data, and generated data, etc.
- The authors should provide scripts to reproduce all experimental results for the new proposed method and baselines. If only a subset of experiments are reproducible, they should state which ones are omitted from the script and why.
- At submission time, to preserve anonymity, the authors should release anonymized versions (if applicable).
- Providing as much information as possible in supplemental material (appended to the paper) is recommended, but including URLs to data and code is permitted.

6. Experimental Setting/Details

Question: Does the paper specify all the training and test details (e.g., data splits, hyper-parameters, how they were chosen, type of optimizer, etc.) necessary to understand the results?

Answer: [Yes]

Justification: Reviewers and readers can refer to Sec. 4.1 and A.2 for these details.

Guidelines:

- The answer NA means that the paper does not include experiments.
- The experimental setting should be presented in the core of the paper to a level of detail that is necessary to appreciate the results and make sense of them.
- The full details can be provided either with the code, in appendix, or as supplemental material.

7. Experiment Statistical Significance

Question: Does the paper report error bars suitably and correctly defined or other appropriate information about the statistical significance of the experiments?

Answer: [Yes]

Justification: All random settings have been provided in the paper (e.g., Sec. 4.1). In addition, all information will be included in the open source code after this review process.

Guidelines:

- The answer NA means that the paper does not include experiments.
- The authors should answer "Yes" if the results are accompanied by error bars, confidence intervals, or statistical significance tests, at least for the experiments that support the main claims of the paper.
- The factors of variability that the error bars are capturing should be clearly stated (for example, train/test split, initialization, random drawing of some parameter, or overall run with given experimental conditions).
- The method for calculating the error bars should be explained (closed form formula, call to a library function, bootstrap, etc.)

- The assumptions made should be given (e.g., Normally distributed errors).
- It should be clear whether the error bar is the standard deviation or the standard error of the mean.
- It is OK to report 1-sigma error bars, but one should state it. The authors should preferably report a 2-sigma error bar than state that they have a 96% CI, if the hypothesis of Normality of errors is not verified.
- For asymmetric distributions, the authors should be careful not to show in tables or figures symmetric error bars that would yield results that are out of range (e.g. negative error rates).
- If error bars are reported in tables or plots, The authors should explain in the text how they were calculated and reference the corresponding figures or tables in the text.

8. Experiments Compute Resources

Question: For each experiment, does the paper provide sufficient information on the computer resources (type of compute workers, memory, time of execution) needed to reproduce the experiments?

Answer: [Yes]

Justification: We have shown these in Sec. 4.1.

Guidelines:

- The answer NA means that the paper does not include experiments.
- The paper should indicate the type of compute workers CPU or GPU, internal cluster, or cloud provider, including relevant memory and storage.
- The paper should provide the amount of compute required for each of the individual experimental runs as well as estimate the total compute.
- The paper should disclose whether the full research project required more compute than the experiments reported in the paper (e.g., preliminary or failed experiments that didn't make it into the paper).

9. Code Of Ethics

Question: Does the research conducted in the paper conform, in every respect, with the NeurIPS Code of Ethics <https://neurips.cc/public/EthicsGuidelines>?

Answer: [Yes]

Justification: We understand and fully comply with our ethical principles.

Guidelines:

- The answer NA means that the authors have not reviewed the NeurIPS Code of Ethics.
- If the authors answer No, they should explain the special circumstances that require a deviation from the Code of Ethics.
- The authors should make sure to preserve anonymity (e.g., if there is a special consideration due to laws or regulations in their jurisdiction).

10. Broader Impacts

Question: Does the paper discuss both potential positive societal impacts and negative societal impacts of the work performed?

Answer: [Yes]

Justification: We describe the positive aspects of this job and generally there are no negative societal impacts from this job.

Guidelines:

- The answer NA means that there is no societal impact of the work performed.
- If the authors answer NA or No, they should explain why their work has no societal impact or why the paper does not address societal impact.
- Examples of negative societal impacts include potential malicious or unintended uses (e.g., disinformation, generating fake profiles, surveillance), fairness considerations (e.g., deployment of technologies that could make decisions that unfairly impact specific groups), privacy considerations, and security considerations.

- The conference expects that many papers will be foundational research and not tied to particular applications, let alone deployments. However, if there is a direct path to any negative applications, the authors should point it out. For example, it is legitimate to point out that an improvement in the quality of generative models could be used to generate deepfakes for disinformation. On the other hand, it is not needed to point out that a generic algorithm for optimizing neural networks could enable people to train models that generate Deepfakes faster.
- The authors should consider possible harms that could arise when the technology is being used as intended and functioning correctly, harms that could arise when the technology is being used as intended but gives incorrect results, and harms following from (intentional or unintentional) misuse of the technology.
- If there are negative societal impacts, the authors could also discuss possible mitigation strategies (e.g., gated release of models, providing defenses in addition to attacks, mechanisms for monitoring misuse, mechanisms to monitor how a system learns from feedback over time, improving the efficiency and accessibility of ML).

11. Safeguards

Question: Does the paper describe safeguards that have been put in place for responsible release of data or models that have a high risk for misuse (e.g., pretrained language models, image generators, or scraped datasets)?

Answer: [\[Yes\]](#)

Justification: We describe safeguards that have been put in place for responsible release of data or models that have a high risk for misuse in Ethics Statement, Sec. C.

Guidelines:

- The answer NA means that the paper poses no such risks.
- Released models that have a high risk for misuse or dual-use should be released with necessary safeguards to allow for controlled use of the model, for example by requiring that users adhere to usage guidelines or restrictions to access the model or implementing safety filters.
- Datasets that have been scraped from the Internet could pose safety risks. The authors should describe how they avoided releasing unsafe images.
- We recognize that providing effective safeguards is challenging, and many papers do not require this, but we encourage authors to take this into account and make a best faith effort.

12. Licenses for existing assets

Question: Are the creators or original owners of assets (e.g., code, data, models), used in the paper, properly credited and are the license and terms of use explicitly mentioned and properly respected?

Answer: [\[Yes\]](#)

Justification: We cite these works accurately.

Guidelines:

- The answer NA means that the paper does not use existing assets.
- The authors should cite the original paper that produced the code package or dataset.
- The authors should state which version of the asset is used and, if possible, include a URL.
- The name of the license (e.g., CC-BY 4.0) should be included for each asset.
- For scraped data from a particular source (e.g., website), the copyright and terms of service of that source should be provided.
- If assets are released, the license, copyright information, and terms of use in the package should be provided. For popular datasets, paperswithcode.com/datasets has curated licenses for some datasets. Their licensing guide can help determine the license of a dataset.
- For existing datasets that are re-packaged, both the original license and the license of the derived asset (if it has changed) should be provided.

- If this information is not available online, the authors are encouraged to reach out to the asset's creators.

13. **New Assets**

Question: Are new assets introduced in the paper well documented and is the documentation provided alongside the assets?

Answer: [\[Yes\]](#)

Justification: We provide necessary usage instructions in the code. Due to space limitations, models are not available. Anyone can easily access the model and instructions after the review.

Guidelines:

- The answer NA means that the paper does not release new assets.
- Researchers should communicate the details of the dataset/code/model as part of their submissions via structured templates. This includes details about training, license, limitations, etc.
- The paper should discuss whether and how consent was obtained from people whose asset is used.
- At submission time, remember to anonymize your assets (if applicable). You can either create an anonymized URL or include an anonymized zip file.

14. **Crowdsourcing and Research with Human Subjects**

Question: For crowdsourcing experiments and research with human subjects, does the paper include the full text of instructions given to participants and screenshots, if applicable, as well as details about compensation (if any)?

Answer: [\[NA\]](#)

Justification: This paper does not involve crowd-sourcing nor research with human subjects.

Guidelines:

- The answer NA means that the paper does not involve crowdsourcing nor research with human subjects.
- Including this information in the supplemental material is fine, but if the main contribution of the paper involves human subjects, then as much detail as possible should be included in the main paper.
- According to the NeurIPS Code of Ethics, workers involved in data collection, curation, or other labor should be paid at least the minimum wage in the country of the data collector.

15. **Institutional Review Board (IRB) Approvals or Equivalent for Research with Human Subjects**

Question: Does the paper describe potential risks incurred by study participants, whether such risks were disclosed to the subjects, and whether Institutional Review Board (IRB) approvals (or an equivalent approval/review based on the requirements of your country or institution) were obtained?

Answer: [\[NA\]](#)

Justification: This paper does not involve crowd-sourcing nor research with human subjects.

Guidelines:

- The answer NA means that the paper does not involve crowdsourcing nor research with human subjects.
- Depending on the country in which research is conducted, IRB approval (or equivalent) may be required for any human subjects research. If you obtained IRB approval, you should clearly state this in the paper.
- We recognize that the procedures for this may vary significantly between institutions and locations, and we expect authors to adhere to the NeurIPS Code of Ethics and the guidelines for their institution.
- For initial submissions, do not include any information that would break anonymity (if applicable), such as the institution conducting the review.