



Advancing Sustainable Timber Management:
The role of Responsible Wood certification

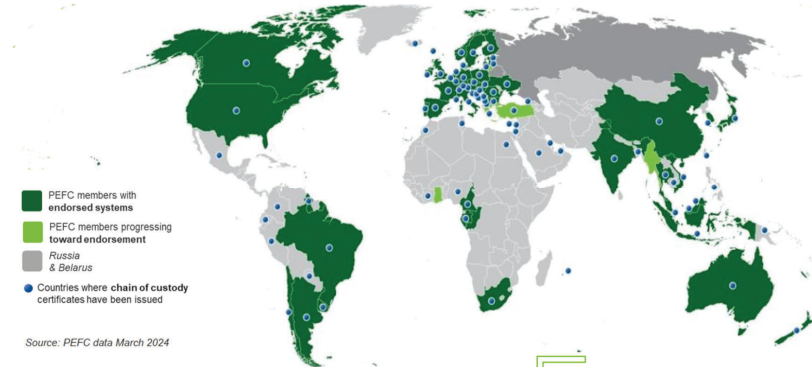
Matt de Jongh, Sustainability Manager



This is deforestation – when there is a land-use change, a forest is cleared for another use, such as urban expansion or infrastructure development

<https://www.responsiblewood.org.au/statement-on-deforestation/>

Programme for the Endorsement of Forest Certification (PEFC) has the largest scale of certified raw material



Over **297*** million hectares PEFC-certified
= **76%** of global certified forests
from endorsed systems stretched over
46 countries (**25%** of the world's
production forests)

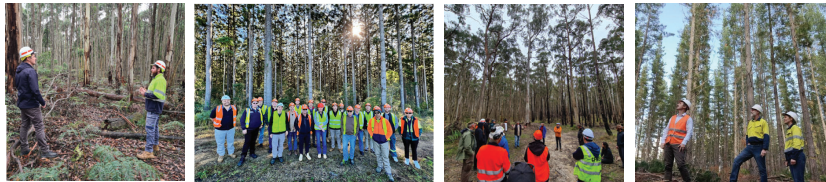
Traceability
through nearly
30,000 PEFC-
certified
participants
in **80+** countries



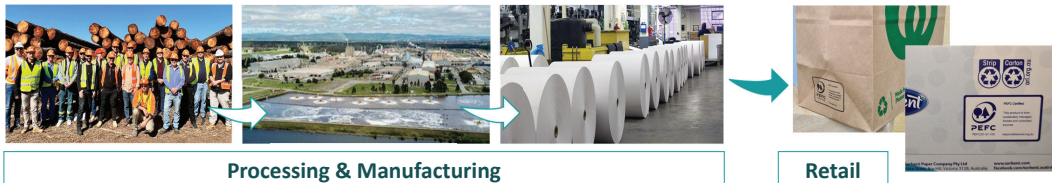
How does it work?

Sustainable forest management and chain of custody certification

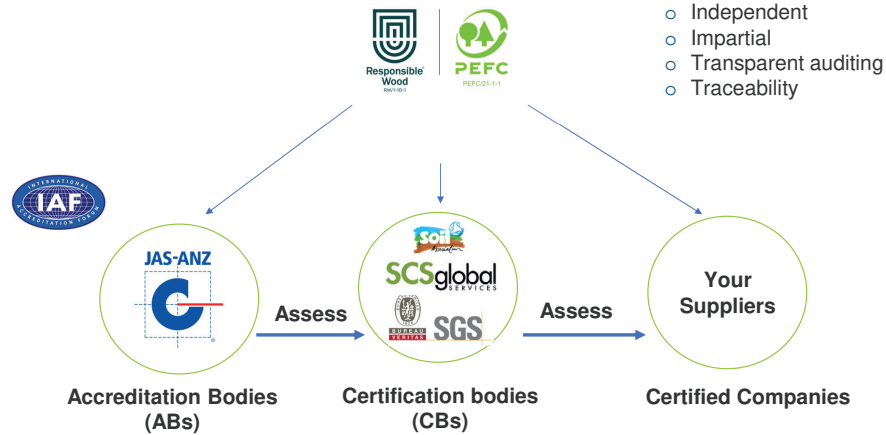
Responsible Forest Management



Chain of Custody



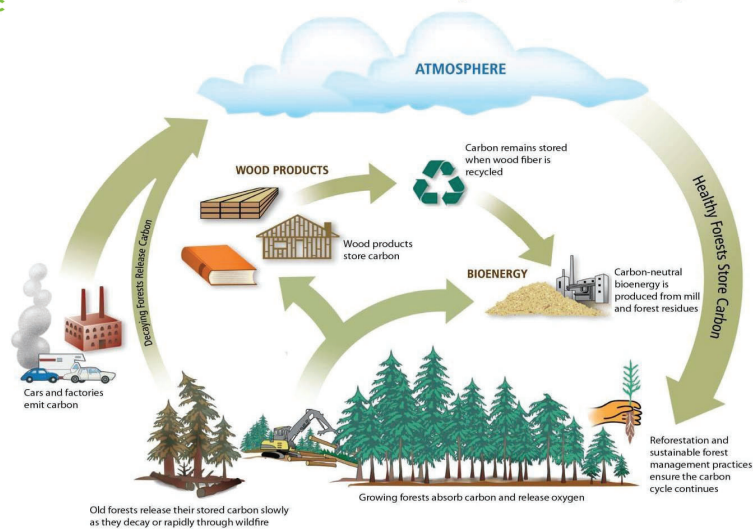
PEFC Certification Model



ISO-based certification Model



Sustainable Forestry Carbon Cycle



Improves air quality by moderating humidity

Improves emotional state and self-expression

Reduced stress response (pulse rate and blood pressure)

Helps to reconnect us to nature

Wood is the only renewable building material

Long-term store of carbon, helping to fight climate change

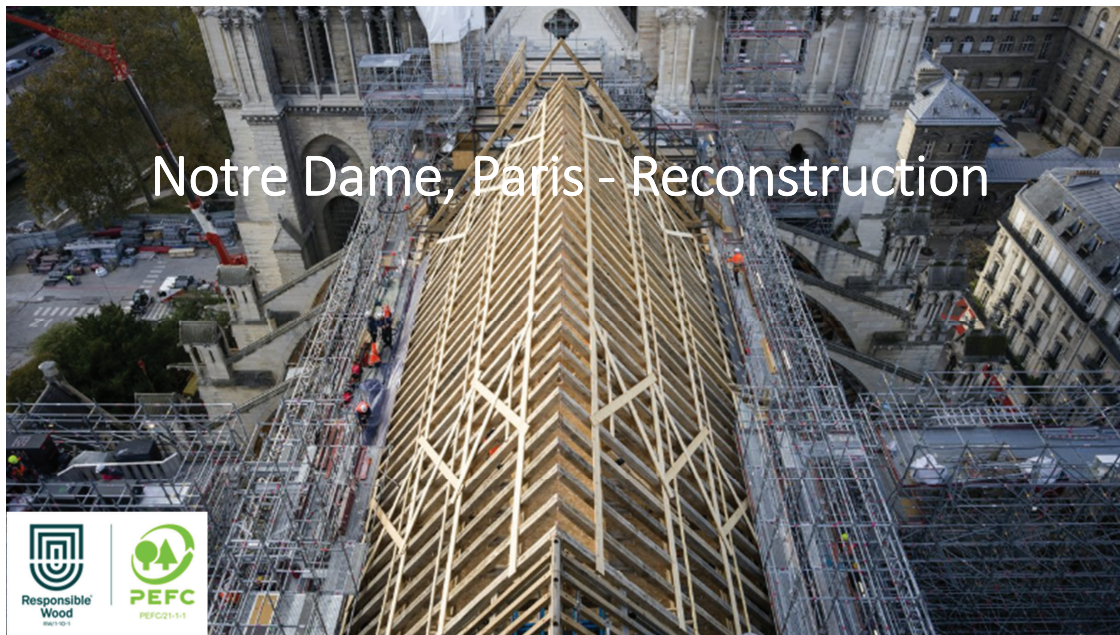
Low energy used in production, hence less CO₂ in the atmosphere

Certification ensures timber comes from sustainable sources

Responsible Wood

PEFC

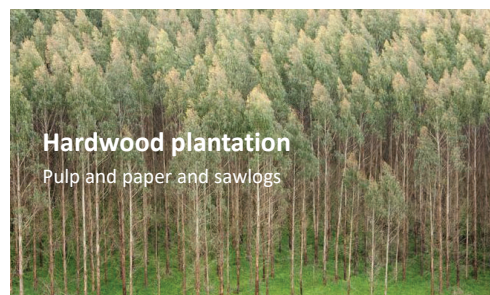




Australia's Forest Types: Native Forest & Plantation

Australia has 134 million hectares of forest, comprised of 132 million hectares of native forest and about 1.7 million hectares of plantations

- Softwood refers to pine species (predominantly plantations)
- Hardwood refers to eucalypt species (predominantly native forests)
- The plantation estate in **Australia** is a mix of exotic softwood species, native hardwoods and native softwoods, whilst **New Zealand** is primarily pine plantations



Traditional Owner management

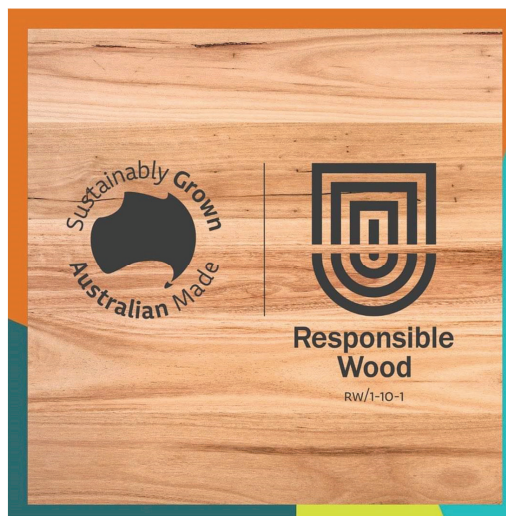
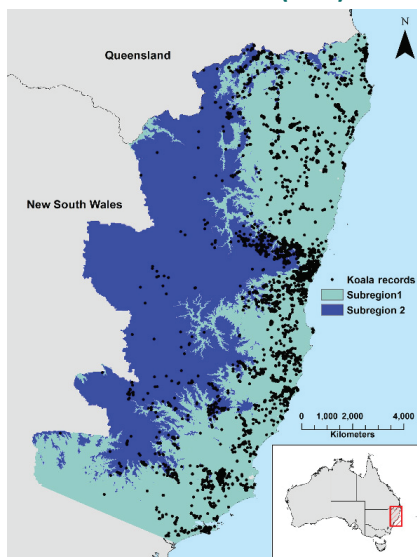
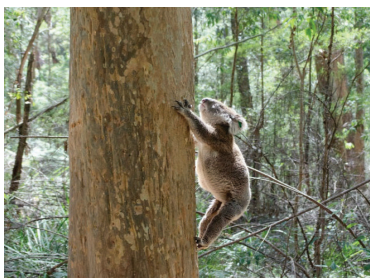


Forest regeneration – post harvesting



Koala research – responses to harvesting– NSW Department of Primary Industries (DPI) and the NSW Natural Resources Commission (NRC)

- No difference in koala occupancy between state forest (harvested and non-harvest areas) and national park
- 10 times the expected occupancy rate
- North coast of NSW



Choose Certified.

"Ensuring our forests, and products sourced from them, are amongst the most sustainable in the world."



Who We Are

- Australian not-for-profit organisation committed to world-class standards for sustainable forest management and forest product traceability.
- Accredited Standards Development Organisation (SDO) by Standards Australia.
- Australian member of the Programme for the Endorsement of Forest Certification (PEFC), the world's largest forest certification system.

What We Do

- Set globally recognised standards for sustainable forest management based on the joint Australian and New Zealand Standard AS/NZS 4708:2017, AS/NZS 4708:2021.
- Promote responsibly sourced forest products through independent, third-party certification.
- Develop and promote the Responsible Wood Certification Scheme (RWCS) in Australia and New Zealand.
- Manage the PEFC brand in Australia and New Zealand on behalf of the New Zealand Forest Certification Association.



Responsible Wood
PEFC
PEFC/21-1-1

Make a difference.

Our Impact

- +16 million Hectares of certified forests in Australia and New Zealand
- 30+ Forest organisations
- + 360 Individual sites operating chain of custody systems

Good for the Planet and People

- Sourced from forests preserving biodiversity and cultural values.
- Contribute to carbon and climate change mitigation.
- Support essential ecosystem services for communities.

Supporting United Nations Sustainable Development Goals (SDGs)

- Promoting sustainable forest management to support UN SDGs.
- Adherence to international sustainability benchmarks through PEFC endorsement.
- Key alignment with climate action, life on land, and responsible consumption and production SDGs.

Independent, Impartial and Traceable

- Balancing cultural, environmental, social, and economic sustainability.
- Independent handling of accreditation and auditing for credibility.
- Thorough, independent audits ensuring transparency and conformance.

"Responsible Wood stands for the principle that certified forests remain as forests. We do not support deforestation or forest degradation."



Get Certified.

"Both Responsible Wood and PEFC certification ensures that home grown and imported timber is sourced legally."



Our Standards

Sustainable Forest Management
AS/NZS 4708:2017

Chain of Custody
AS/NZS 4709:2017
PEFC ST 2002:2020

 What is forest certification?
responsibly managed and forest -certification

How Certification Works

- Standards developed and endorsed through comprehensive consultation and assessment by Standards Australia, Standards New Zealand and PEFC International.
- Organisations develop a management system that conforms to the Responsible Wood and PEFC certification standards.
- Organisations are audited at least annually by an independent certification body (ISO/IEC accredited).
- Eligible and conforming organisations are issued with certification for sustainable forest management, chain of custody and, as both.

Key Benefits of Certification

- Market access.
- Enhanced social license.
- Increased credibility and brand image.
- Improved compliance with regulations.
- Operational improvements.
- Enhanced stakeholder confidence.

Enabling Sustainability.



Responsible Wood
PEFC
PEFC/21-1-1

"When consumers purchase products with these labels, they can be assured the product purchased originates from a healthy forest that will be around for the next generation."

Our Logos

- Represents commitment to forest sustainability.
- Enhances product visibility and consumer trust.
- Can be used by certified organisations.
- May be used by brand owners, retailers and other non-certified organisations to support and promote responsible forestry practices.

"Membership of Responsible Wood is an investment in the future of sustainable forests and their products."

Become a Member

- Voting rights on director appointments.
- Participation in Annual General Meetings (AGMs).
- Access to specialised training programs and case studies.
- Insights into market trends, regulatory changes, and sustainability opportunities.
- Networking opportunities with industry professionals and stakeholders.

Membership Categories

- Forest Growers.
- Primary Processors.
- Supply Chain.
- Employee Representative Organisations.
- Community, Social and Environment.



Responsible Wood / RW/21-1-1
30 Beechey Street, Nelson QLD 4023
PO Box 796, New Farm QLD 4005
T +61 7 3359 1758 / E. info@responsiblewood.org.au
responsiblewood.org.au

Prospectus QR Code



eNews QR Code



Do you want to learn more about sustainable forestry? – Field Trips

- Promoting sustainable forestry and responsible and ethical supply chains.
- Offering an inside look at sustainable forestry practices. See firsthand the production of the ultimate renewable resource - timber

A collage of three photographs showing people in safety gear (hard hats and high-visibility vests) participating in field trips. One photo shows a group standing in a forest, another shows a group in front of a yellow logging truck, and a third shows a group in a forest setting.The Responsible Wood and PEFC logos are displayed in the bottom right corner of the collage, along with a small circular logo featuring a stylized tree and the text 'Responsible Wood' and 'PEFC'.



Part of the solution for:

- forests staying forests – no deforestation
- carbon and climate change mitigation benefits of using forest and wood-based products
- forests to provide their ecosystem services to the planet and people
- globally recognised and accepted processes applied by thousands of companies around the world
- shared responsibility and accountability for traceability
- balancing environmental, social and economic sustainability dimensions

Why certification matters, in summary



Responsible Wood
RW/1-10-1



PEFC
PEFC/21-1-1



Thank you. Questions?



Responsible Wood
RW/1-10-1



PEFC
PEFC/21-1-1